

THE eQRM

NOVEMBER 2016



The BVARA in Beaver County Pennsylvania

Beaver Valley Amateur Radio Association

W3SGJ

Repeater 145.310 PL 131.8

On the cover :

The Beaver Valley Amateur Radio Association wishes you and yours a very Happy Thanksgiving!

Inside this edition

Who We Are	3	Hamfests & General Announcements	10
This Month	4		
Propagation	6	Radio Sport	12
Get a license or Upgrade	7	Bits and Pieces	13
New license and Upgrades	8	Interesting links	14
Membership	9		

Check into our nets

Wednesday 2 Meter

8:30PM on 145.310 MHz PL 131.8

Wednesday 10 Meter

9:00PM on 28.470 MHz

The eQRM is a publication of the Beaver Valley Amateur Radio Association (BVARA) and is Copyright 2010 - 2016. All material presented in this publication is not necessarily the views of the American Radio Relay League (ARRL), BVARA, or members of the said organizations. If you would like to contact the editor of the eQRM, please email David at kc3bxc.73@gmail.com. Please visit us online at www.W3SGJ.org. To subscribe to our newsletter, please visit W3SGJ.org/newsletter.php

Who We Are

2016 BVARA OFFICERS

President: Jack Spencer, KZ3Z

Vice President: Dick Hanna, K3VYY

2nd Vice Pres.: Rob Miller, N3OJL

Treasurer: Pam Spencer, W3PMS

Secretary: Norm Trunick, K3NJT

Director: Bob Winkle, N3AZZ

Director: Bob Croft, KB3RHN

Trustee: Rich Soltesz, K3SOM



MONTHLY MEETINGS

E-Board meetings are now held the Saturday before the monthly club meeting.

VE testing begins at 5:00 PM.

Regular meetings are at 6:30 PM

All meetings are held at
Beaver County
Emergency Services Center
351 14th Street
Ambridge, PA 15003
on the second Thursday of every month
(unless otherwise stated).



2016 MEETING DATES

Nov 10

Dec no meeting

Christmas Party Dec 3rd

2017 MEETING DATES

Jan 12

Feb 09

Mar 09

Apr 13

May 11

Jun 08



This Month

BVARA Club Feature Presentation:

This Month:

Speaker:

Rich Soltesz
K3SOM

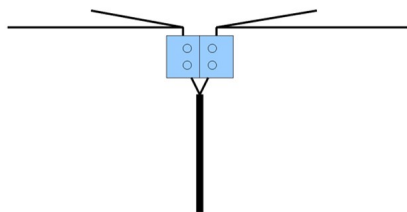
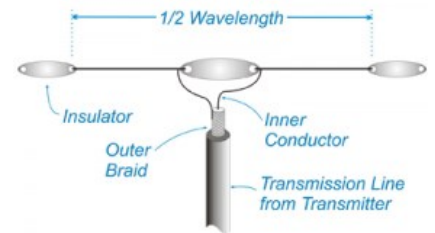
Topic:

Dipoles for Beginners

Including:

Continuing with our BVARA Presentation Series this year, our topic this month deals with an area that beginning hams will find very helpful. We'll show you how to build a basic dipole for the HF bands.

We'll begin by taking a look at what performance to expect from a basic 40 meter dipole mounted at a half wavelength above ground. We'll examine an actual center connection for this antenna and how to construct it. Then we'll look at what to expect if you can't put it up at 68 feet, but much lower. We'll talk about how to adjust the length of the dipole at that different height to get the best match to your transceiver. We'll also talk about ways to eliminate radiation from the coax feedline as well as why that is important.



But wait, there's more! We'll look at how to construct a fan dipole for two HF bands. Whether you are a beginner or a veteran ham, this is one exciting presentation that you won't want to miss.

Rich's Background:

Extra Class Ham, Licensed since 1962, VE,
B.S. Electrical Engineering

Last month after the Club business meeting there was no time for the presentation. Rich will give the "Dipoles for beginners" forum at this November 10th club meeting.

More this Month

Weekly

The Monaca Steak and Shake has a great wait staff. Come let them take your order.

Thursday Morning Breakfast
(or you can have lunch)



The BVARA meets every Thursday at Steak 'n Shake in Center Township, by the Beaver Valley Mall, at 10:00 AM. All radio amateurs and those interested in amateur radio are encouraged to come join us at our Thursday morning breakfast.

See you
Thursday at



The eQRM urges all Beaver County licensed amateurs to participate in the County's RACES and ARES programs.

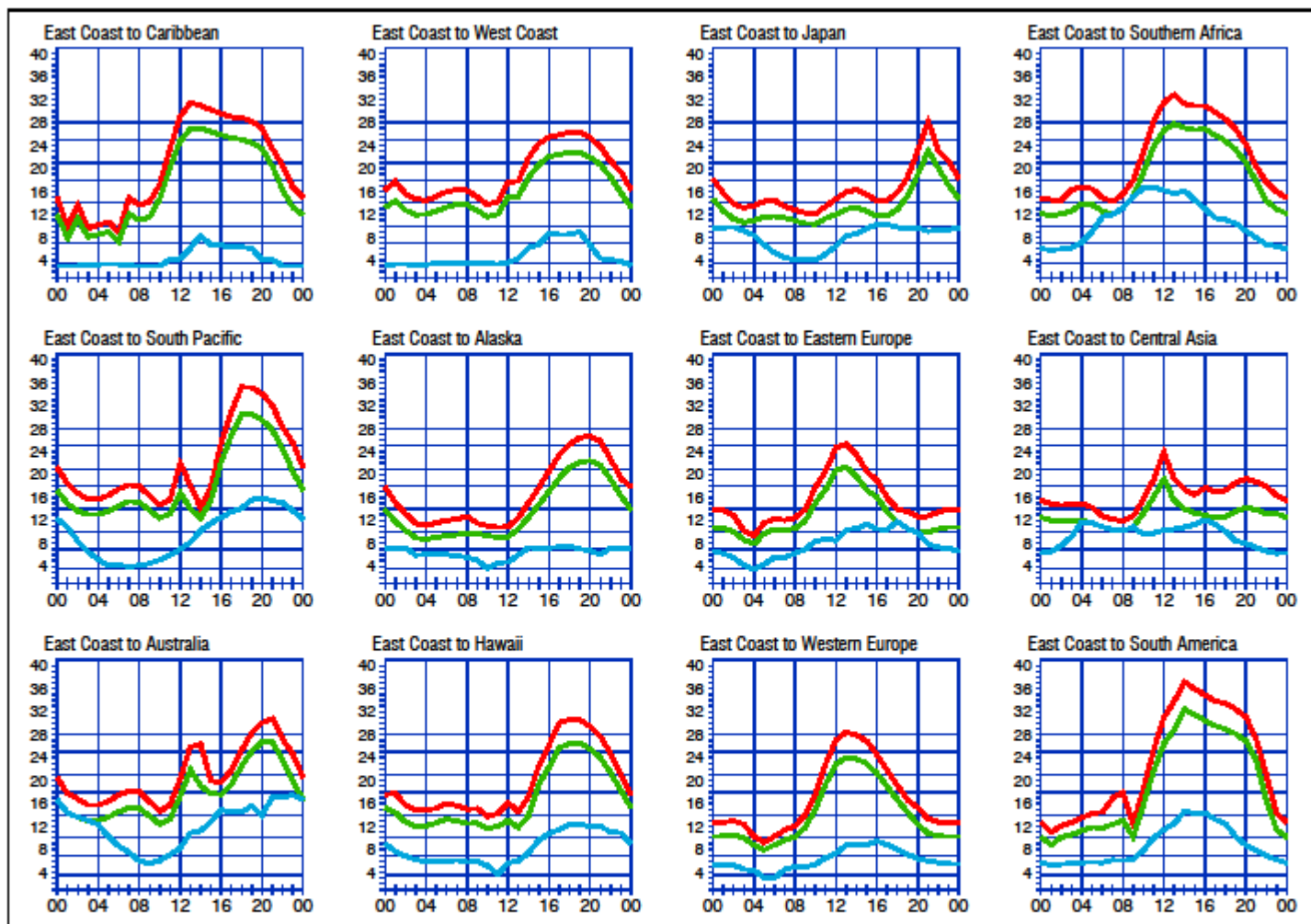
Any Beaver County Amateur that is interested in participating in the RACES/ARES programs can do so by checking into the Beaver County Public Service Net which meets every Monday evening at 8:30 PM local time on the N3TN 146.850 MHz repeater (131.8 PL)

RACES / ARES

The eQRM Urges All County Hams to Participate.



Propagation



When are the bands open? These charts, generated using CAPman, show probabilities for average HF propagation in the month of November for the paths indicated. The horizontal axes show Coordinated Universal Time (UTC), and the vertical axes frequency in MHz. On 10% of the days of this period, the highest frequencies propagated will be at least as high as the upper red curves (HPF, highest possible frequency) and on 50% of the days they will be at least as high as the green curves (MUF, classical maximum usable frequency). The blue curves show the lowest usable frequency (LUF) for a 1500-W CW transmitter. For SSB or a lower transmitter power, the LUF will be somewhat higher than the blue curves indicate. See Oct 1994 QST, pp 27-30, and Feb 1995 QST, pp 34-36, for more details. The predictions assume an observed 2800-MHz solar flux value of 79. This is a Very Low level of solar activity. See the detailed propagation tables on *The ARRL Antenna Book CD-ROM*.

PROPAGATION

The East Coast propagation chart listed here is for November 2016.

If you would like more information on how to read these charts, or for more information on propagation in general,

please visit <http://www.arrl.org/propagation>

Get your License or Upgrade

If you are interested in getting your first FCC license or upgrading your current amateur radio license, the Beaver Valley Amateur Radio Association holds VE Test sessions (Volunteer Examinations) the second Thursday of each month at the Nine One One center in Ambridge Pennsylvania prior to our BVARA Club meeting. If there is no meeting there is no test session. Please come take your test with us!

For more information, contact :
Rich Soltesz, K3SOM
(724) 847-0610
k3som@arrl.net



VE TEST SESSIONS

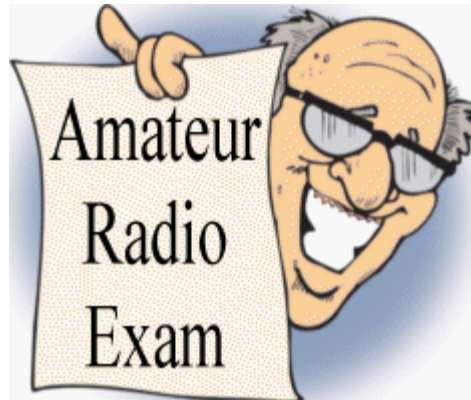
Beaver County Emergency Services Center 351 14th Street Ambridge, PA 15003.
Tests begin promptly at 5 pm on the same day as BVARA Club Meetings
(the second Thursday of the month).
All classes of amateur radio license tests are administered.

ALL candidates MUST bring ALL of the following:

1. 2 forms of I.D. - one MUST be a photo I.D.
2. A pencil AND a pen with blue or black ink.
3. The original AND a photocopy of any valid ham license.
4. The original AND a photocopy of any C.S.C.E.
5. The test fee of \$15 - cash, check, or money order.

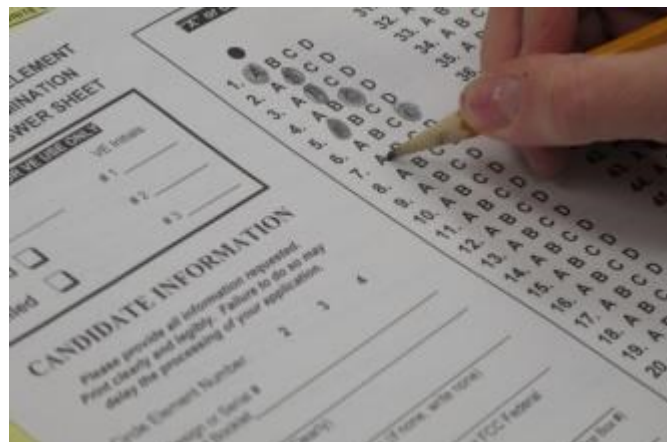
New License and Upgrades

BVARA VE Testing



We had one ham who took his Technician and General exam last month and returned this month for his Extra Class exam. He passed.

Bob Barker - KG5PJD, originally from Flatonia, TX has passed his Extra Class test and is living in the Monaca, PA area for the next couple of years while he works on a local project.



Membership Information

By becoming a BVARA member you help secure the future of Amateur Radio in Beaver County. Additionally, the BVARA receives a portion of each ARRL membership you purchase!

Join the BVARA and ARRL

Sign up for:

Price

- | | | |
|--|-------|-------|
| <input type="checkbox"/> BVARA full membership | 20.00 | _____ |
| <input type="checkbox"/> BVARA student membership | 15.00 | _____ |
| <input type="checkbox"/> BVARA associate membership | 10.00 | _____ |
| <input type="checkbox"/> BVARA Child under 21 at home membership | 5.00 | _____ |
| <input type="checkbox"/> One year ARRL membership | 49.00 | _____ |

A Club Donation _____

ARRL Member? Yes No

Total Enclosed _____

Your License Class (If you have one.)

- | | |
|--------------------------------------|---------------|
| <input type="checkbox"/> Technician | Name _____ |
| <input type="checkbox"/> General | Address _____ |
| <input type="checkbox"/> Advanced | _____ |
| <input type="checkbox"/> Extra Class | Email _____ |

Phone _____

Your Call sign _____

Your Signature _____

Make check or money order payable to:

The Beaver Valley Amateur Radio Association, P.O. Box 424

South Heights, Pa 15081

Hamfests & General Announcements



WACOM 2016 HAMFEST

Washington Amateur Communications Inc.

SUNDAY, NOVEMBER 6th 2016

WASHINGTON COUNTY FAIRGROUNDS

2151 North Main St.

WASHINGTON, PA 15301

8:00 A.M –3:00 P.M—Admission \$5.00

Doors open early for VENDOR SETUP Saturday Nov5th 6:30 p.m.

Talk in on 146.790 City-147.285 East-147.390 North-145.250 West -147.315 South- All PI-131.8

MAJOR VENDORS

Over 250 tables

KJI ELECTRONICS- -QUICKSILVER RADIO-YAESU FACTORY DISPLAY

MAIN PRIZES

1ST YAESU FT-DX1200 1.8 - 54 MHz HF + 6m Multi Mode Transceiver

2nd YAESU FT2900R/E High power 75w 145MHz FM mobile

3rd YAESU FT2900R/E High power 75w 145MHz FM mobile

4th YAESU FTM-3100R 144Mhz 65W FM Mobile Transceiver

BLACK BOX PRIZE'S ONLY 50 TICKETS Sold

MAIN DRAWING AT 1:00 P.M. NEED NOT BE PRESENT TO WIN

CONTACT FOR HAMFEST TABLES N3TIR bud@n3tir.com 724-350-6745

Vendor Forms located at www.wacomarc.org under Hamfest tab

We will sell out ALL TABLE SPACE PLEASE CALL EARLY

6Ft TABLES SUPPLIED, cost \$12.00 ea. - Discount reserve more than (4) \$10.00ea.

ADMISSION not INCLUDED ON TABLES rentals

VE TESTING TIME 8:00am

BREAKFAST AND LUNCH WILL BE AVAILABLE

DOOR PRIZES—YL PRIZE—DX CARD CHECKER

THE MEADOWS CASINO & Tanger Outlets less than 2 miles

Send all vendor payments to address below for tables

Please include vendor form and make checks payable to

WACOM c/o Norma Plants N3YJJ

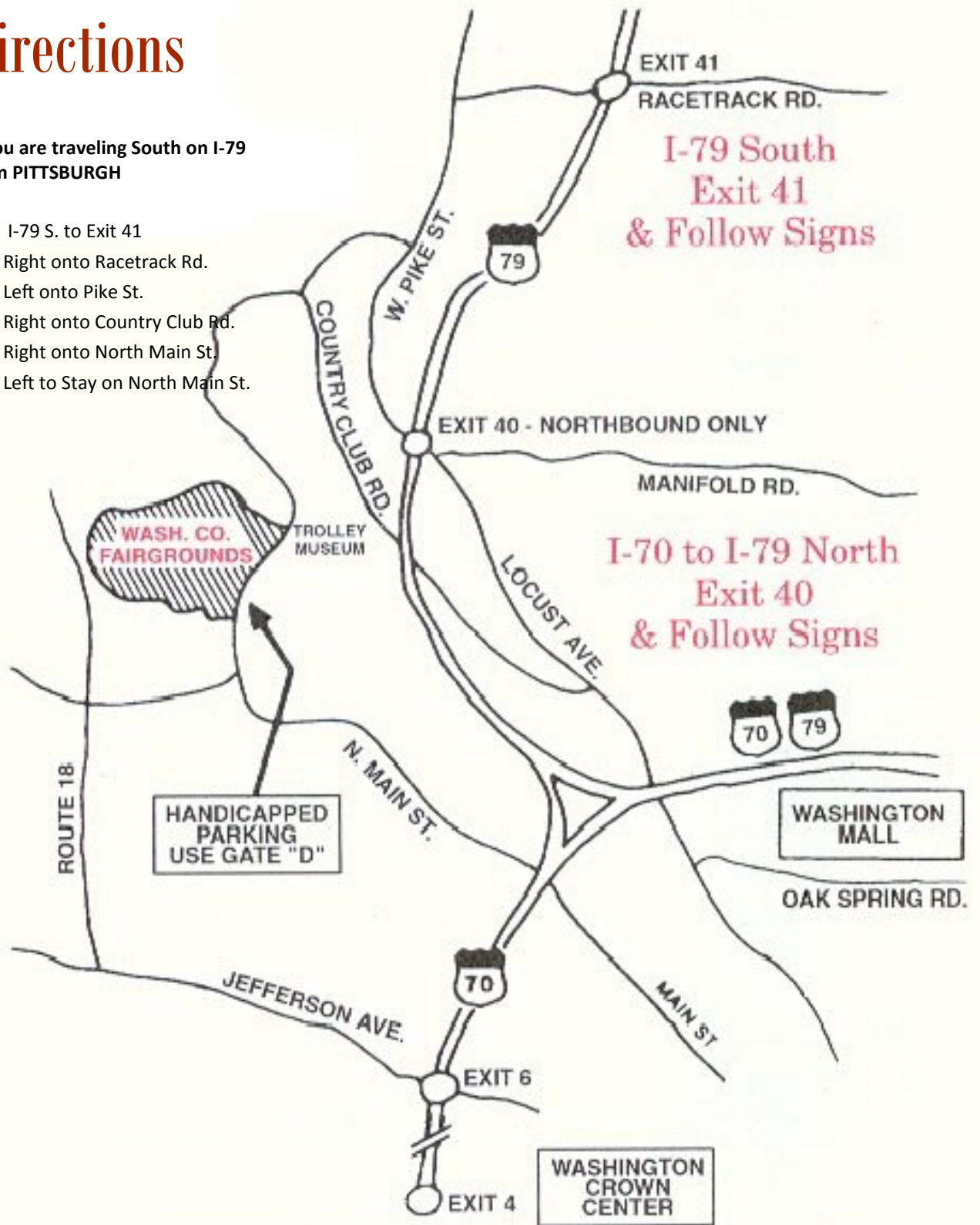
236 Chambers Ridge Road West Alexander, Pa 15376

Hamfests & General Announcements

Directions

If you are traveling South on I-79
from PITTSBURGH

- I-79 S. to Exit 41
- Right onto Racetrack Rd.
- Left onto Pike St.
- Right onto Country Club Rd.
- Right onto North Main St.
- Left to Stay on North Main St.



Contest Corral — November 2016

check for updates and a downloadable PDF version online at www.arrl.org/contests.

Refer to the contest websites for full rules, scoring information, operating periods or time limits, and log submission information.

Start Date-Time	Finish Date-Time	Bands	Contest name	Mode	Exchange	Sponsor's Website
2 2000	2 2100	3.5	UKEICC 80 Meter Contest	Ph	4-char grid square	www.ukaicc.com/which-contest
3 1800	3 2200	28	NRAU 10 Meter Activity Contest	CW Ph Dig	RS(T), 6-char grid square	www.nrau.net/activity-contests
5 0800	5 1800	3.5-28	IPARC Contest, CW	CW	RST, serial, "IPA" and state	www.iparc.de
5 1200	6 1200	1.8-28	Ukrainian DX Contest	CW Ph	RS(T), 2-letter oblast or serial	urdx.org/rules.php?english
5 1700	5 2100	3.5-14	RSGB International Sprint, SSB	Ph	Your call, other's call, serial, name	www.rsgbcc.org/hf
5 2100	7 0300	1.8-28	ARRL Sweepstakes Contest, CW	CW	Serial, precedence, your call, check, section	www.arrl.org/sweepstakes
6 0600	6 1800	3.5-28	IPARC Contest, SSB	Ph	RS, serial, "IPA" and state	www.iparc.de
6 0800	6 1200	Any	EANET Sprint	CW Ph Dig	RS(T)	www.fedisa.org
6 0900	6 1700	3.5-28	High Speed Club CW Contest	CW	RST, mbr or "NM"	www.highspeedclub.org
6 1100	6 1700	28	DARC 10 Meter Digital Contest	Dig	RST, serial	www.darc.de
8 0200	8 0400	3.5-28	ARS Spartan Sprint	CW	RST, SPC, power	arsqrp.blogspot.com
9 2000	9 2100	3.5	RSGB 80 Meter Club Sprint, SSB	Ph	Other's call, your call, serial, name	www.rsgbcc.org/hf
12 0000	13 2359	3.5-28	WAE DX Contest, RTTY	Dig	RST, serial	www.darc.de
12 0001	13 2359	28	10-10 International Fall Contest, Digital	Dig	Name, mbr or "0," SPC	www.ten-ten.org
12 0700	13 1300	3.5-28	JIDX Phone Contest	Ph	RS, Prefecture No. or CQ zone	www.jidx.org/jidxrule-e.html
12 1200	13 1200	1.8-28	OK/OM DX Contest, CW	CW	RST, 3-letter district code or serial	okomdx.orf.cz
12 1200	13 2359	1.8-50	SKCC Weekend Sprintathon	CW	RST, SPC, name, mbr or "none"	www.skccgroup.com
12 1400	13 0200	1.8-50	Kentucky QSO Party	CW Ph Dig	RS(T), county or SPC	www.wkdx.com
12 1900	14 0500	1.8-432	CQ-WE Contest	CW Ph Dig	Name, location code, years of service	cqwa.cbah.org/rules.html
17 0130	17 0330	3.5-14	NAQCC CW Sprint	CW	RST, SPC, mbr or power	naqcc.info
18 1800	18 2200	3.5	YO International PSK31 Contest	Dig	RST, serial, county or country	www.yo5orq.ro
19 0000	20 2359	50-1296	ARRL EME Contest	CW Ph Dig	Signal report	www.arrl.org/eme-contest-1
19 1200	20 1200	3.5-28	LZ DX Contest	CW Ph	RS(T), 2-letter district or ITU zone	lzdxbfm.org/rulesen.html
19 1800	20 0700	1.8	All Austrian 160 Meter Contest	CW	RST, serial, OE district code (if any)	www.oevsv.at
19 1700	19 1859	1.8-50	Feld Hill Sprint	Dig	RST, mbr, SPC, grid	sites.google.com/site/feldhillclub
19 1900	19 2300	1.8	RSGB 2nd 1.8 MHz Contest, CW	CW	RST, serial, UK district code (if any)	www.rsgbcc.org/hf
19 2100	21 0300	1.8-28	ARRL Sweepstakes Contest, SSB	Ph	Serial, precedence, your call, check, section	www.arrl.org/sweepstakes
20 1300	20 1700	3.5-7	Homebrew & Oldtime Equipment Party	CW	RST, serial, class	www.qrpcc.de
21 0200	21 0400	1.8-28	Run for the Bacon QRP Contest	CW	RST, SPC, mbr or power	qrptest.com/pigrun
23 0000	23 0200	1.8-28	SKCC Sprint	CW	RST, SPC, name, mbr or power	www.skccgroup.com
24 2000	24 2100	3.5	RSGB 80 Meter Club Sprint, CW	CW	Other's call, your call, serial, name	www.rsgbcc.org/hf
26 0000	27 2359	1.8-28	CQ Worldwide DX Contest, CW	CW	RST, CQ Zone	www.cqww.com/rules.htm
30 2000	30 2100	3.5	UKEICC 80 Meter Contest	CW	4-char grid square	www.ukaicc.com/which-contest

All dates refer to UTC and may be different from calendar dates in North America. Times given as AM or PM are local times and dates.

No contest activity occurs on the 60, 30, 17, and 12 meter bands. Mbr = Membership number. Serial = Sequential number of the contact. S/P/C = State, Province, DXCC Entity. XE = Mexican state. Data for Contest Corral is maintained on the WA7BNM Contest Calendar at www.homsocpla.com/contestcal and is extracted for publication in QST 2 months prior to the month of the contest. The ARRL gratefully acknowledges the support of Bruce Horn, WA7BNM, in providing this service. Listings in blue indicate contests sponsored by ARRL or NCJ. The latest time to make a valid contest QSO is the minute listed in the "Finish Time" column.

94 November 2016 ARRL, the national association for Amateur Radio® www.arrl.org

Bits and Pieces

It is November! This year has been flying by. Never let safety fly by you. Think carefully before you start any radio project. Think safety first. Keep yourself free from any unsafe act. Enjoy your radio hobby without any injury.

I mention the ARRL Sweepstakes Contest in late November. This is always a well-attended contest. The CW portion is early in the month, the SSB portion happens later in the month and should garner some interest from our testers. For more information : <http://www.arrl.org/contest-calendar>



I take a look back at this summer's "Radio Season". It has been busy for me. I suspect it has been busy for you too. For me it has been a quiet radio summer. I have had so many projects to do around the house and events to attend it seriously cut into my radio pursuits. Cutting the grass was a big time consumer. There were graduation parties, weddings, picnics, birthday parties and upkeep on our home. I am looking forward to some quieter time in the winter months ahead. I am going to focus on learning something new in my radio hobby. I invite you to find something new to participate in in your radio hobby. I feel like I am on the starting line of exciting endeavors! How about you?

There are still a few outside projects needing my attention before I can focus on Radio. Soon the cold will put those to rest. There is one more Hamfest I plan to attend in our local area before winter. I am excited and yet sorry to see the warm days go by and winter to soon be here. There are many things to look forward to, Thanksgiving, Christmas and New Year's. I am planning some radio time in there, I hope you are too!



Where ever your radio hobby takes you, be safe. Think it through. 73.

Some Interesting Links



Private weather station in Essex, UK <http://www.g0hwc.com/weather/gauges-ss.htm>

Ham Radio Solar site <http://www.solarham.net/>

An interesting site about radio history <http://www.astrosurf.com/luxorion/qs1-ham-history6.htm>

Ham/amateur radio discussion board https://groups.google.com/forum/#!topic/rec.radio.amateur.misc/YoTo6R_MUhA

Saturday, November 19, 2016 8:00 - 1:00pm <http://www.hamjam.info/>

Ham radio pod cast <http://hamradio360.com/index.php/category/podcast/>

Practical amateur radio pod cast <http://myamateurradio.com/>

For All Radio Operators

Whether at home or



on the road



The Amateur's Code

CONSIDERATE ...never knowingly operates in such a way as to lessen the pleasure of others.

LOYAL ...offers loyalty, encouragement and support to other amateurs, local clubs, and the American Radio Relay League, through which Amateur Radio in the United States is represented nationally and internationally.

PROGRESSIVE ...with knowledge abreast of science, a well-built and efficient station and operation above reproach.

FRIENDLY ...slow and patient operating when requested; friendly advice and counsel to the beginner; kindly assistance, cooperation and consideration for the interests of others. These are the hallmarks of the amateur spirit.

BALANCED ...radio is an avocation, never interfering with duties owed to family, job, school or community.

PATRIOTIC ...station and skill always ready for service to country and community.