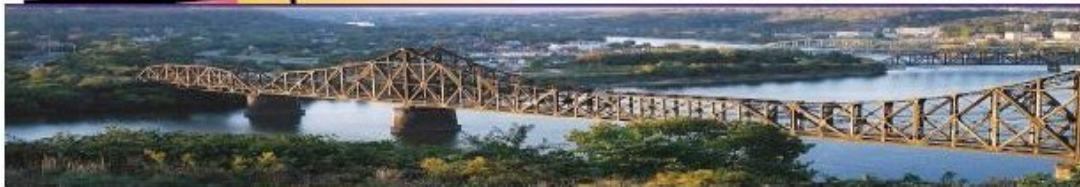




THE BEAVER VALLEY AMATEUR RADIO ASSOCIATION
 WWW.W3SGJ.ORG
 BEAVER COUNTYS ONLY 75 YEAR ARRL AFFILIATED CLUB!

The eQRM Newsletter

Home of W3SGJ/R
 145.310- 131.8 Hz PL



Volume 4, Issue 5
 September 2010
 Grant, KB3QFQ - Editor

What's new in the BVARA

MAIN ARTICLE EXCERPT

It is my personal opinion that an operator who enjoys the fun of operating from a rare or sought-after location and then does not send QSLs in a timely fashion is a pretty low form of life in the amateur radio world. I could list a few of those. Some of them go on large DXpeditions where there

**READ THE COMPLETE ARTICLE
 ON PAGE 7!**

UPCOMING EVENT



Oct 15-17

Inside this Issue:

RACES	2
Pittsburgh Area Calendar	3
Membership Info	4
BVARA Speaker Series	5
Club Info + Event Schedule	6
Main Article	7
BVARA 2 Meter Net Roster	10
QST Prop Charts	11
Monthly Section News	12

READER'S POLL OF THE MONTH

“Who, in the radio/tech field, would you like to see interviewed?”

Answer by emailing Grant at KB3QFQ@W3SGJ.org

What would you like to see added to the newsletter?

Would you like to help, but don't know how?

Email me at KB3QFQ@W3SGJ.org and let me know!!

I need **YOUR** opinion!

Check us out on the web by clicking the links below



[Facebook](#)



[Twitter](#)



[W3SGJ.org](#)



[Blog](#)



[Geocaching](#)

© Copyright 2010
 The Beaver Valley Amateur
 Radio Association

Letters and Emails to the Editor – Please email KB3QFQ@W3SGJ.org

The eQRM encourages letters/e-mails to the editor. Letters must contain your contact information for verification prior to publication. Preference will be given to letters of 200 words or less. Letters are subject to editing. Unused letters will not be acknowledged or returned.

The BVARA 10 Meter Net Lunch group meets every Thursday at Rainaldi's in Center Twp at 10:30 AM. All area amateurs are invited and encouraged to attend the Thursday Morning Lunch.

VE TESTS are held by the BVARA VE Team at the Beaver County Emergency Operations Center in Ambridge. IF YOU DESIRE TO TAKE A TEST, CONTACT CHRIS, W3OUF, FOR THE DATE OF THE NEXT TEST SESSION.

All tests will begin PROMPTLY AT 6:00PM. Information and registration on a test session can be obtained by contacting the VE Team Coordinator, Chris Moratis, W3OUF.

His address, email and phone number are as follows:

**Chris Moratis, W3OUF
1199 Highland Avenue
Ambridge, PA 15003
PHONE: 724-266-2866
cjmoratis@verizon.net**

2010 BVARA Officers

- President: Jack Spencer, KZ3Z
- Vice President: Robert De Marco, WA3ZRM
- Second Vice President: Evan Finkelstein, KB3QFR
- Secretary: Norm Trunick, K3NJT
- Treasurer: Pam Spencer, W3PMS
- Director: George Caffro, N3HOJ
- Director: Chris Moratis, W3OUF
- Trustee: Dick Hanna, K3VVY

BVARA Meetings

***VE testing begins at 5:00.
E-Board meetings are held at 6:30,
Regular meetings are at 7:30.***

- September 9 – Ambridge 911 Center
- October 14 – Ambridge 911 Center
- November 11 – Ambridge 911 Center
- December - None, Christmas party



RACES & ARES

eQRM Urges ALL Beaver County Amateurs to Participate



As a matter of editorial opinion, the eQRM urges all Beaver County licensed amateurs to participate in the County's RACES and ARES programs.

Any Beaver County Amateur that is interested in participating in the RACES/ARES programs can do so by checking into the Beaver County Public Service Net which meets every Monday evening at 8:30 PM local time on the N3TN 146.850 MHz repeater (88.5 PL).

PITTSBURGH AREA HAM RADIO CALENDAR

From the Greater Pittsburgh VHF Society

September

11: Two Rivers ARC "Hams n Eggs" Breakfast

11-13: ARRL September VHF QSO Party -
More Info: <http://www.arrl.org/contests/calendar.html>

14: Two Rivers ARC Amateur Radio Exam
Session

18-19: ARRL 10 GHz and Up Contest -
More Info: <http://www.arrl.org/contest/calendar.html>

21: Two Rivers ARC Club Meeting

25-26: CQ WW RTTY DX Contest -
More Info: <http://www.cq-amateur-radio.com>

26: Cleveland Hamfest and Computer Show -
Hamfest Association of Cleveland - More Info:
<http://www.hac.org>

October

3: Monessen ARC MARCFEST 2010 Hamfest -
Blaine Hill VFD - Elizabeth, PA - Talkin:
147.225/443.350 MHz
More Info: <http://www.w3csl.com> -
Phone: 412 287-8291 - Email: grilli@verizon.net

9: Two Rivers ARC "Hams n Eggs" Breakfast

9-10: PA QSO Party Contest (Tentative) -
More Info: <http://nittany-arc.net/paqso.html>

17: Western Pa Repeater Council Meeting

19: Two Rivers ARC Club Meeting

30-31: CQ World Wide DX Contest (SSB Mode) -
More Info: <http://www.cq-amateur-radio.com>

November

6-8: ARRL November Sweepstakes (CW) -
More Info: <http://www.arrl.org/contests/calendar.html>

7: WACOM Hamfest - Washington County Fair
Grounds -
2151 North Mail Street - Washington, PA
Talkin: 145.49 Mhz More Info: 724-484-0207 /
Email: n3tir@arrl.net - <http://www.wacomarc.org>

20-22: ARRL November Sweepstakes (Phone) -
More Info: <http://www.arrl.org/contests/calendar.html>

27-28: CQ World Wide DX Contest (CW Mode) -
More info: <http://www.cq-amateur-radio.com>

December

3-5: ARRL 160 Meter Contest - More Info:
<http://www.arrl.org/contests/calendar.html>

11-12: ARRL 10 Meter Contest - More Info:
<http://www.arrl.org/contests.html>

11: Two Rivers ARC "Hams n Eggs" Breakfast

14: Two Rivers ARC Amateur Radio Exam
Session

For more information about these events, please visit

W3SGJ.org/calendar



BY BECOMING A MEMBER OF THE BVARA, YOU CAN HELP SECURE THE FUTURE OF AMATEUR RADIO IN BEAVER COUNTY. ADDITIONALLY, THE BVARA RECEIVES A PORTION OF EACH ARRL AND/OR WORLD RADIO SUBSCRIPTION YOU PURCHASE!

Join the BVARA, ARRL and World Radio

Sign up for:	Price	Quantity
<input type="checkbox"/> BVARA FULL MEMBERSHIP	20.00	
<input type="checkbox"/> BVARA STUDENT MEMBERSHIP	15.00	
<input type="checkbox"/> BVARA ASSOCIATE MEMBERSHIP	10.00	
<input type="checkbox"/> BVARA SPOUSE/CHILD MEMBERSHIP	5.00	
<input type="checkbox"/> ONE YEAR ARRL MEMBERSHIP	39.00	
		Subtotal: _____
ARRL MEMBER ?	YES	NO
	_____	_____
		Donation: _____
		Total: _____

Your License Class (if any):

- Novice
- Technician
- General
- Advanced
- Extra

Name _____
 Address _____

 Phone _____

Your Call Sign: _____ Exp. date _____

Signature _____

**Make Check or Money order payable to:
 The Beaver Valley Amateur Radio Association, P.O. Box 424
 South Heights, PA 15081**

Are you interested in writing for the eQRM newsletter?

There are many ways you can help with the newsletter, even if it is simply sending me an email. We are always looking for new, interesting content; if you read something of interest, tell me!

A publication is only as good as its readers.

Even if you are not the “writer type”, you can still help!

Please help me out by sending one radio-related article, or an announcement that you have read.

So get involved!
 You may end up enjoying it.

To contact me, please email me at KB3QFQ@W3SGJ.org



Interested in becoming an **amateur radio operator**?
 Want to upgrade your license?

Jack Spencer, KZ3Z is **hosting a class** for just these reasons. For details, please contact Jack at 724-869-2429 or visit www.W3SGJ.org

The BVARA Speaker Series

The BVARA Speaker Series provides a vast array of topics and discussions, with a new topic every month at our club meetings.

Here are a few words from Rich, K3SOM, explaining the idea behind the series:

“By adding a speaker program with a wide variety of topics, not all necessarily exclusively ham-radio, our club has an opportunity to **create excitement, to stimulate discussion, to spark creativity, and to enable people to have some fun as they expand their normal comfort zones with new ideas and possibilities for them to pursue.**”

Are you interested in attending?

Just show up at our club meetings, held on the second Thursday of every month. They are held at:

Beaver County Emergency Operations Center
351 14th Street
Ambridge, PA 15003

Would you like to speak? Contact me or any other BVARA club members to let them know when you would like to speak, and what you would like to speak about!

Potential speakers may want to present topics like:

On what frequency am I transmitting, and how close to the band edge can I operate?

What's it take to operate BPSK31?

How can I effectively compete in a contest?

What's a fox hunt?

How can I find DX?

Or anything that interests you!

This Month:

Speaker:
Rich Soltesz,
K3SOM

Topic:
HF DXing,
Contesting,
And Other Thoughts

Including:
Where Hams Live
DX – What You Define
Pile-Ups are Chaos
Contesting
And much more!

Rich's Background Information:

Extra Class Ham, licensed since 1962

Amateur Radio VE
(Volunteer Examiner)

B.S. Electrical Engineering

Registered Professional Engineer, PA

“...our club has an opportunity to create excitement....”

Club Announcements + Event Calendar

New Repeater Status

de Jack, KZ3Z

Our new repeater has arrived. It was ordered on March 15 and shipped on May 11.

The new repeater is a Maggiore Hi Pro "E" 35w version.

The PL tone is now 131.8.

It will come from the factory wired for our S-Com 7330 controller. It also has an optional IF filter installed, which would be needed if 2 meters goes to 15khz splits.

Our current Trustee, Dick K3VYY, has already downloaded and installed the latest firmware upgrades to the new controller. It will have 13 minutes of digital audio available for messages.

Below is the list of donors to the new repeater:

Pam, W3PMS
Jack, KZ3Z
Bob, WA3ZRM
George, N3HOJ
Norm, K3NJT
Dick, K3VYY
Rick, KB3RXP
Rich, K3SOM

All donated \$100 each.

The repeater cost is **\$1637**. Further donations would be appreciated. +

VE Test Session

de Chris, W3OUF

The next test session will be at the:

Beaver County Emergency Operations Center
351 14th Street
Ambridge, PA 15003

Time: **5:00 P.M.**
(walk-ins allowed)

Date: **Thursday, September 9**

All candidates wishing to take the test should bring **ALL** of the following:

1. Two (2) forms of identification. **One should be a Photo ID.**
2. A pencil and a blue or black pen.
3. Your original **AND a photocopy** of your current license (if any).
4. Your original **AND a photocopy** of any C.S.C.E's (if any).
5. The test fee of **\$15.00**.

All classes of amateur radio license tests will be administered.

Note: A new set of Technician test questions has started being used on July 1, 2010.

For more information, please contact our VE Test Coordinator:

Chris Moratis, W3OUF
1199 Highland Avenue
Ambridge, PA 15003
PHONE: 724-266-2866
cjmoratis@verizon.net +

The BVARA Calendar of Events

For more information, please visit www.W3SGJ.org

September 24 – 26:
Campaganza
in Moraine State Park,
Butler, PA

October 15 – 17:
Jamboree on the Air
at Fern Hollow Nature
Center, Sewickley, PA

December 4:
Christmas Party
at the Baden Municipal
Building, Baden, PA

Do you have any

event ideas?

Send them to us by posting on our [Facebook Page!](#)

MAIN ARTICLE

QSL'ing

By Reg Beck, VE7IG (from eHam)

The old adage, "The final courtesy of a QSO is a QSL", is as true today as it was when that phrase was coined many years ago. There are many reasons why a fellow amateur may want your QSL. He or she might be working on an award, wanting to post your card on an online QSL gallery or perhaps just collecting QSLs and putting them on the shack wall or taking them to the local club meeting to show to friends. Although eQSLs and LOTW confirmations are a form of QSLs, they are still limited in use so this article will concern itself with actual paper QSLs normally sent through the postal system.

If someone decides not to QSL at all, that is certainly his or her choice. However, I believe this fact should be published (perhaps on QRZ.com) so that people don't waste time and money attempting to obtain a card when none will ever be forthcoming. Other than just chatting with a friend, DX or otherwise, or making a casual QSO when there is nothing else happening, many operators only work a station with the idea of obtaining a QSL in mind. I know I do. When I tune across a pileup and see what station is operating, already having a card or not will usually determine whether or not I call the station. Oh, I still get excited working that new one or a rare base in Antarctica but usually have getting that QSL in the back of my mind when working that station. So the main reason myself and a lot of other hams work some stations is to obtain their QSLs. Take note DX! We only work you to obtain your QSL!

When attempting to obtain a card, perseverance can win! Tracking down a source of a card after 30 or 40 years and obtaining the QSL is a DXing feat par excellence. But often the original logs have been lost, as in the case of the logs of Gus Browning, W4BPD, and many others. W4BPD travelled around the world in the 1960s and 70s and operated from many countries, so if you lose your Gus Browning cards, you are out of luck. Some of those are "deleted" DXCC entities and those cards are certainly prized in any QSL collection or online gallery. Why would you want to go after QSLs for old contacts? Perhaps because a friend told you about an interesting award and you find yourself mining your old logs for QSOs. That happened to me not long ago when my friend Sasha, RW4NH, told me about the CQ DX Field award. After a week of mining my 2 tubs of QSLs I turned to the logbooks, back to 1980 when that award begins. Look into that award, I think it is one of the most interesting DX challenges available.

It is my personal opinion that an operator who enjoys the fun of operating from a rare or sought-after location and then does not send QSLs in a timely fashion is a pretty low form of life in the amateur radio world. I could list a few of those. Some of them go on large DXpeditions where there is a designated QSL manager so they don't have to issue their own cards but when it comes to some of their own DX operations, cards are not forthcoming. These guys have become DX big-shots, too big for their DX-britches and deserve to be

taken down a notch or two. Imagine one of them responding to questions after giving a presentation at a DX dinner and having someone point out that this is all quite all right and quite interesting but where is my QSL from your own such and such operation? If you do not have the time, energy or interest in QSLing then PLEASE get yourself a QSL manager. There are a great many out there only too willing to serve. Then regularly send your logs to your manager if your DX operation is ongoing.

Another operating "sin" by my way of thinking is not keeping a log. Keeping a log used to be mandatory in Canada but is no longer required by the licensing authority. A radio log was a legal document at one time here in Canada. If you do not keep a log then I doubt that you can legitimately send QSLs as you won't remember sufficient details of the QSO. So don't be an ass and keep a log! If you go on an expedition and keep an electronic log on computer it is easy to submit it as an online log so operators can check to make sure they are actually in the log before sending a card. There are several websites that host online logs and a Google search may provide a suitable one for your operation. Many larger DXpeditions keep an online log active during the

*“Take note DX!
We only work you
to obtain your
QSL!”*

MAIN ARTICLE

actual operation so you can make sure you have the contact in the log before the operation ends.

QSLing can be expensive if you need the card quickly. But if you are willing to wait up to a year or two the bureau is usually an inexpensive way to send or receive cards, especially here in Canada where belonging to the national amateur radio organization, RAC, entitles you to use the outgoing QSL bureau free of charge up to quite a large number of cards per year. The incoming bureaus are all free, except for providing postage from the bureau to your QTH. Some people do not respond to bureau cards because they consider cards sent via bureau to be an afterthought and not serious. But for many hams worldwide the bureau is the only way they can afford to obtain a card and they are very serious about QSLing via bureau. It is unfair to these hams to deny their cards sent via bureau. So stop being lazy and be considerate of your fellow ham and get those bureau cards and answer them! A lot of the problem is just about laziness. If you take time from your busy schedule to operate, save some of it for QSLing.

As a point of interest, the DARC bureau in Germany will return your card with an appropriate rubber stamped note if your intended recipient has become a silent key. In the case where he has sent you his card and you have responded, this means that in the time his card has been in the bureau system coming to you and yours has been in the bureau going back to him, he has become a silent key. Bureaus can take a long time. They are operated by volunteers and sometimes it is difficult to get enough volunteers. If you need someone's card and want

to QSL direct, then it is usual to look after return postage yourself. Enclose a self-addressed envelope and appropriate postage, a current IRC or US dollar bills (green stamps). You can get correct postage from some sources including Plum DX in New York. When you're sending for cards let your cards accumulate for a month or so and then order the stamps. When using IRCs, ensure they are current, as most post offices will not accept old IRCs. Usually 1 IRC is sufficient but some countries may require 2 or 3. Also, some countries do not accept IRCs or have rigorous

“Always check QRZ.com first to see if there are special QSLing requirements... I've found some of these to be a bit outrageous....”

rules about accepting them. Some countries do not allow their amateurs to receive money through the mails so sending green stamps may be a no-no, otherwise one or two green stamps are usually enough, depending on the country, although some countries are now requiring 3.

A bit of research online using Google may be necessary to see what you can use to prepay postage. I have found that stamps are always good but remember they must be stamps of the country your card is going to and not stamps of your own country. Strange as it may seem I've often received cards with US stamps on the return envelope where the sender forgot this point. If you do not enclose return postage in some form be prepared to have your card returned via the bureau.

Always check QRZ.com first to see if there are any special QSLing requirements. Some QSL managers have a list of rules about QSLing. I've found some of these to be a bit outrageous but if you want a card you may have to comply.

Unfortunately, there are some countries where postal theft is rampant. Sending money in envelopes to these countries will often result in your envelope not getting delivered. I used to send cards to most third-world countries using postage stamps instead of IRCs or green stamps and the envelope open with flap tucked in. These always got through because the thief was able to look in the envelope and see there was no money and then put it back in the postal system. If the flap is stuck down the thief usually has to rip the envelope open and then has to dispose of it. Then I found out that it is now against Canadian postal regulations to leave the envelope open, apparently due to privacy concerns. It may be legal in your country but if not use a stamp on your SASE, seal the envelope and keep your fingers crossed. Postal registration is always possible as a last resort but is very expensive.

Recently I waited 6 months for a QSL from a DX operation. The DX operation itself was an incredible feat of engineering and operating but the QSLing left something to be desired. The card, when it came, was a beautiful card in ultimate maxi-colour. Obviously they put a lot of time and effort into designing the card and then waiting for it to be printed. All the cards I receive eventually go into QSL binders or a plastic tub. Some are scanned for my online QSL gallery. These cards are nice but I'd much rather receive a plain and

simple card within a few weeks than wait months for a fancy card. Sometimes time is a consideration when getting cards for awards--meeting the DXCC honour roll deadline for listing in QST, for example, or being the first to qualify for a new award. We want our cards FAST and the older we get the faster we want them!

I have had cards printed by foreign printers and have been very happy with the high quality QSL and the low cost of cards and shipping, although time is always a factor. These cards were for special events. Cards for ordinary operations or my IOTA island operations have always been simple, inexpensive cards printed quickly and usually available for mailing by the time I get home from the operation and have to deal with the stack of incoming envelopes already waiting. Lately I have begun printing my own cards using WB8RCR's QSL Maker program, available free online. This program lets you design a simple card to your specifications, except for the QSO panel which is fixed, and print it in colour on your own printer. You can print a few cards easily on regular paper or light card stock but if you want to print a lot of cards you need to obtain A4 card stock for printing 4 cards per sheet. This paper is not easy to find but may be obtained from the UK on eBay. You also need a printer that prints A4. Many ordinary printers do but some do not. This program is also good for printing a QSL to send to someone in the hopes he or she will fill it out, sign it, and return it. Sometimes that works.

If you have a scanner an excellent practice is to scan your prized QSL cards. Then, if you lose one you still have a record of it. Somehow I recently lost a very rare card from one of the deleted Yemen DXCC entities. It may have fallen into my waste basket and been disposed of.

Anyway, I had scanned that card for someone's online QSL gallery, so at least I had a scan of the original card. The card was a W2CTN manager card from 1964. QSL manager W2CTN is no longer with us but the name and call sign of the original HB9 operator of that International Red Cross mission was printed on the card. I was very surprised to find him still listed in QRZ.com. I printed out a copy of the scan and sent it to him with a request to endorse the back if he no longer had any cards. I received it back very quickly endorsed on the back and also received a nice letter with the QSL! I have had credit for mixed DXCC for that particular entity since the 1960s and now if I ever decide to apply for phone DXCC, I still have a confirmation in hand.

Some people forget that a letter or a note on the back of a QSL card attesting to the authenticity of the contact is also a QSL and accepted by award managers and card checkers, perhaps with some stipulations as in the case of IOTA. They may not be as easy to deal with as a regular card but are often sufficient. So if you do not have cards or have run out of them, please remember that you can send a letter of confirmation or endorse the card appropriately and return it. Some managers had a rubber stamp to stamp the blank reverse side of a QSL card they received and then returned it to the sender as a confirmation. When I visited KV4AA in 1963 he had a bunch of these hanging on hooks on the wall for the Danny Weil expeditions. This was in the good old days of the blank reverse side of QSLs -- although I still get a lot of them with blank reverse sides.

Some awards, such as IOTA, are very careful about QSLs. The IOTA regulations stipulate that the correct call sign be printed on the QSL and not hand written. Also the name of the island operated from must be

printed on the card and not hand written--not the group name but the name of the actual island where the operation took place. There is leeway for some old cards for contacts before 2001 but not much, if any, for cards for operations after 2000. This is because of past frauds, errors and ambiguities which cause a lot of trouble for the card checkers and the IOTA manager and the fact that there are so many IOTA groups and so many islands that count for IOTA as well as so many that do not. So if you go on an IOTA expedition please check the rules for QSLs before printing your cards.

If your own expedition card is missing the island name or correct call sign used you can always PRINT this information on a QSO label using your computer printer and put it on the card or letter. This applies to operators living on islands as well. You need your island name on the card. It is a good idea to sign across the corner of such a label or apply a rubber stamp. Also, anyone submitting QSLs for IOTA should ensure the cards submitted confirm to the regulations because if you have a card declined that is YOUR fault, not the card checker's fault, as you did not follow the rules. This applies to all other award applications as well.

Always ensure that the correct information is included on your card. I once received a 6 meter QSL requesting my grid for VUCC but his own grid was not on his card!

So remember that many operators (including DXCCers, VUCCers, county hunters, etc.) enjoy real QSLs and get very excited when they receive a new one! Please co-operate and QSL. I'll be looking for your card. +

Did you enjoy this article? Post your comments on our [Facebook Page](#) or our [Twitter Stream](#)!

BVARA 2 Meter Net Roster

Below is the net protocol. Please PRINT THIS OUT as a reference for when you run the net.

CQ, CQ, CQ. Calling the Beaver Valley Amateur Radio Association Two Meter Net. (BK)

CQ, CQ, CQ. Calling the Beaver Valley Amateur Radio Association Two Meter Net. (BK)

This is (**your call**), your net control station for this evening. (BK)

This net meets every Wednesday evening at 8:30 PM local time on the 145.310 W3SGJ repeater with a PL of 131.8 Hz. (BK)

The Beaver Valley Amateur Radio Association is an American Radio Relay League affiliated club and we invite you to visit our website at www.w3sgj.org. (BK)

The purpose of this net is to exchange general information about the amateur radio service in the tri-state area. this net is also part of the National Traffic System. (BK)

I will now stand by for any stations with emergency traffic. Any stations with emergency traffic please call (**your call**). (BK)

I will now stand by for any stations with priority traffic. Any stations with priority traffic please call (**your call**). (BK)

I will now stand by for any stations with routine traffic. Any stations with routine traffic please call (**your call**). (BK)

I will now stand by for any stations with ARRL Bulletins. Any stations with ARRL Bulletins please call (**your call**). (BK)

I will now stand by for any stations having any announcements for the net. Stations having announcements please call (**your call**). (BK)

Make sure the following are mentioned either by you or by an announcement station:

Mention webpage (www.w3sgj.org) for our newsletters & information

Mention Rainaldi's Thursday luncheon @ 10:30AM / 11:00AM

NEW: Monthly Executive board meeting begins at 6:30PM on the Saturday before the club meeting.

Mention monthly membership meeting on the second Thursday of every month at 911 Center in Ambridge.

**VE testing begins at 5:00PM.
Meeting begins at 7:30PM.**

I will now stand by for any mobile stations wishing to check in. Mobile stations only please call (**your call**) (BK)

I will now stand by for any portable stations wishing to check in. Portable stations only please call (**your call**). (BK)

I will now stand by for any stations wishing to check in to the beaver valley amateur radio association two meter net. Stations wishing to check in please call (**your call**). (BK)

**Record all call signs and then allow for comments.
After all stations make comments, stand by for any late or additional check-ins.**

I would like to thank all stations that have checked into our net. Listeners are reminded that the Beaver Valley Amateur Radio Association's 10 Meter net on 28.470 MHz will follow this net at 9:00PM local time. Everyone is invited to check in. (BK)

I will now close the net at _____ local time and return the repeater to general amateur use. This is (**your call**) wishing you 73's and a good evening.

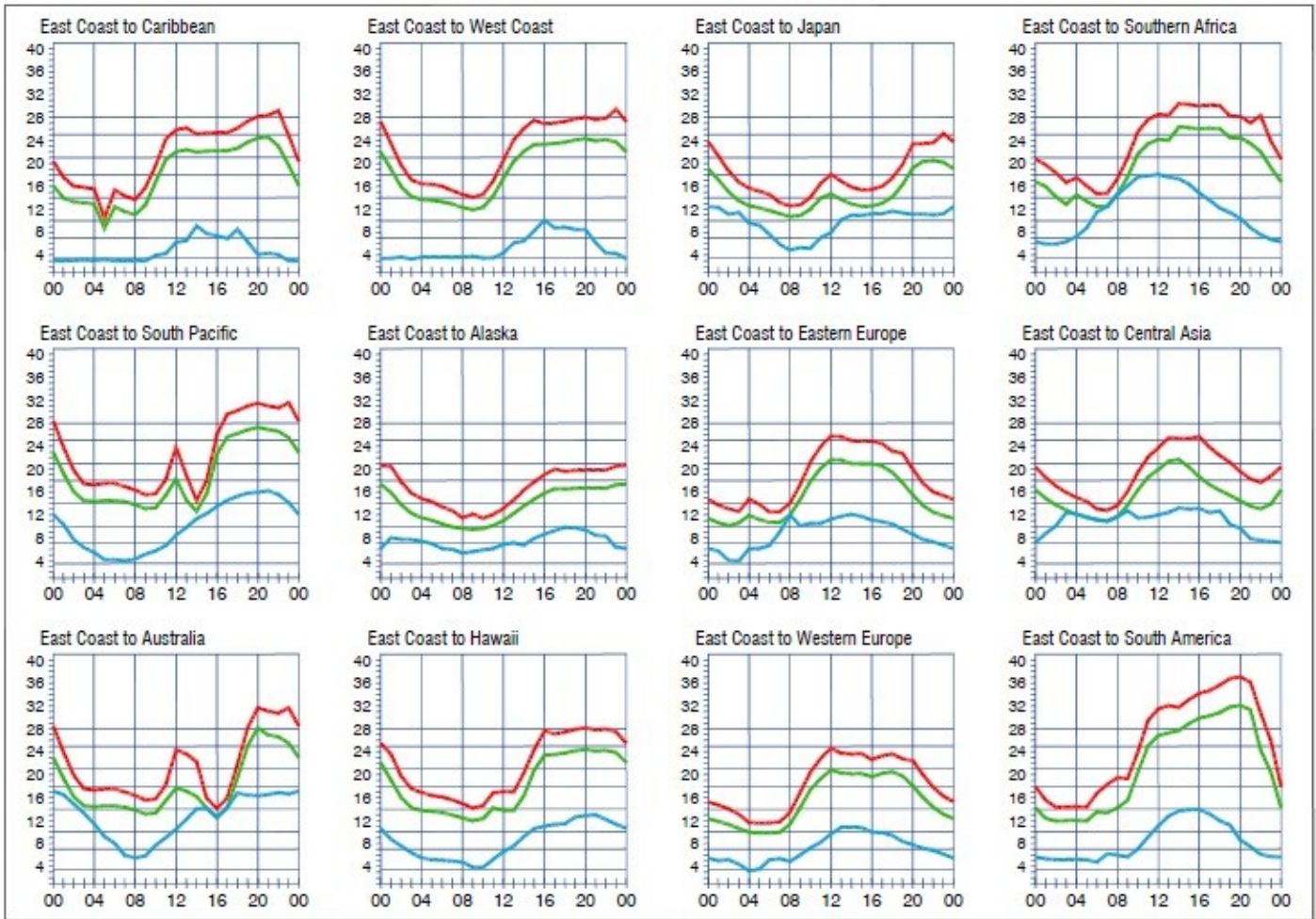
notes: a (BK) means to pause to allow the repeater tail to beep.

If any stations have traffic, ask if any stations on frequency can take the traffic. If not, take the traffic and contact Bob, WA3ZRM at 724-378-7070.

THANK YOU!

To Bob, WA3ZRM for the donation of an antique 1940's radio to the club. The radio has an estimated value of approximately \$150-\$200.

QST Propagation Charts



The above chart is for the month of **September**.

For information on how to read these charts, and on propagation in general, visit <http://www.arrl.org/propagation>

Beaver County

SPECIAL SERVICE CLUB

Authenticity Guaranteed eQSL.com

W3SGJ

Beaver Valley Amateur Radio Association
 P.O. Box 424
 South Heights, PA 15081, USA

ITU 8, CQ 5, Grid EN90ur, Beaver County

MONTHLY WPA SECTION NEWS

de John Rodgers, N3MSE

September 2010

This weekend presents some activity for us here in W. Pa. On Sunday September 12 the Butler County ARA will sponsor their swap and shop hamfest. Unfortunately I will not be able to attend since I will be attending the Pennsylvania Emergency Management Agency meeting in Lancaster along with SEC Larry Keller. This meeting will be discussing the finishing touches on the new Auxiliary Communications Service to combine various forms of radio services for emergencies. I will provide additional information after the meeting to interested parties.

On October 3 the Monessen Amateur Radio club will hold their hamfest. Information for all hamfests is available at <http://www.arrl.org/hamfests>.

October 9 and 10 is this year's PA QSO Party sponsored by the Nittany Amateur Radio club. This is one of my favorite operating events. This is a great opportunity to not only take part in a contest but also to chat with friends in Pennsylvania and see how your station performs working stations throughout the Commonwealth.

The QSO Party administrators have just announced that K3MJW, the Skyview Amateur Radio Society will be the Special Event station for this year. This is a good chance to prepare for the Simulated Emergency Test that will take place on October 30. A planning meeting

is scheduled for October 2 for the SET.

Individuals interested in ARES operations are invited to join the WPA ARES yahoo group. You can join this group by sending an email to wpaares-subscribe@yahoo.com and putting the word "subscribe" in the subject line.

Another website I recommend is located at <http://www.wpanbems.org>. This site has valuable information about NBEMS, which is the sections digital communications platform.

Harry and Dave also have new presentations to inform you about updates to the program. One feature I value is the fact that we now have the ICS-213 form and the ARRL traffic form available to complete and send via NBEMS.

I would like to remind members that they should go to the league web site and log into the members only section to update their profile. When the new website was placed into service, member's privacy was considered and you now need to opt-in so as to get the various bulletins and also to make your information public. I encourage everyone to do so in order to be kept up to date on important information.

There is still time to schedule a visit from myself to your club meeting. I have some open dates for the remainder of the year. As I have stated previously I do not just pop in but prefer to be scheduled so that

adequate time is available for me to report on activities as well as answer member questions. Drop me an email at n3mse@arrl.org with available dates.

As always I encourage you to join one of the various traffic nets and help deliver messages to individuals in your community and throughout the country as operators struggle to keep this activity running strong. The section net is on 3983 every evening at approximately 6:00 PM local time. The CW net is at 3585 at 7 PM local time. Also please check in on the Saturday morning ARES net. This net is conducted at 9 AM local during the summer and 10 AM in the fall on 3983 Hz. Please check in for valuable information. There are also several traffic nets on various vhf-uhf repeaters.

Join the nets and lets all get Radio Active.

73

John V. Rodgers, N3MSE
W. Pa. Section Manager +



Are you interested in seeing what Boy Scout Troop 405 and Explorer Post 73 are doing?

Visit their website at www.Baden405.com to see photos, video and info about the Troop!