

SEPTEMBER 2014

# THE eQRM



## THIS MONTH

### Bulletins

Hamfests and general announcements

### The Month Ahead

Contests, VE testing, and Presentation Series

### Propagation Charts

Propagation charts for the East Coast

### Who We Are

Membership information, club officers, and meetings

## CHECK IN TO THE NETS

Wednesday 2 Meter  
8:30PM on 145.310 MHz

Wednesday 10 Meter  
9:00PM on 28.470 MHz

# Bulletins

Propagation Forecast Bulletin 36 ARLP036  
From Tad Cook, K7RA  
Seattle, WA September 5, 2014  
To all radio amateurs

SB PROP ARL ARLP036  
ARLP036 Propagation de K7RA

Sunspot activity continued to weaken over the past seven days (August 28 through September 3). Average daily sunspot numbers declined from 113.4 to 85.1, and average daily solar flux went from 130.5 to 126.7. Geomagnetic activity was up recently, with average planetary A index increasing from 7.4 to 14.7, nearly double the values from the August 21 to 27 period week earlier.

The latest predicted solar flux values are 150 on September 5, 155 on September 6 and 7, 150 on September 8, 145 on September 9 to 11, 130 on September 12, 115 on September 13, 110 on September 14 and 15, 120 on September 16, 130 on September 17 to 19, 135 on September 20 and 21, then 130, 125 and 120 on September 22 to 24, and 115 on September 25 and 26.

Predicted planetary A index is 8, 10, 20, and 15 on September 4 to 7, 8 on September 8 and 9, 5 on September 10 to 12, 8 on September 13, and 5 on September 14 to 24.

One encouraging sign is the GOES-15 X-Ray Background flux has risen over the past few days. It was C1.2 on September 2 and C1.0 on September 3 and 4, and it hasn't had a C reading in quite some time. This is actually more significant than solar flux regarding effect on the ionosphere. You can see the background flux daily at <http://www.swpc.noaa.gov/ftpd/ir/latest/DSD.txt>. Checking the quarterly record, you can see that X-Ray background flux has not been this high since early July:

Sunspot numbers for August 28 through September 3 were 78, 73, 64, 90, 94, 105 and 92, with a mean of 85.1. 10.7 cm flux was 118.6, 120.1, 123.1, 124.8, 126.6, 136, and 138, with a mean of 126.7. Estimated planetary A indices were 21, 21, 15, 15, 11, 10, and 10, with a mean of 14.7. Estimated mid-latitude A indices were 17, 20, 11, 13, 12, 10, and 11, with a mean of 13.4.

## *This Month:*

### *Speaker:*

Rich Soltesz  
K3SOM

### *Topic:*

Measurements for Hams

### *Including:*

Continuing with our BVARA Presentation Series this year, our topic this month is a practical topic that presents fundamental measurement techniques for every ham. These techniques are basic, non-complicated techniques that cover over 80 percent of your basic needs. We'll begin with a multi-meter and move on to ways to measure SWR, resonance, capacitance, inductance, receiver warm-up drift and other easy-to-measure parameters. Several other devices will be demonstrated and the list is getting longer as club night approaches. But wait, there's more: you're invited to bring your favorite piece of measuring device for all of us to explore. Such an opportunity! This is one presentation you won't want to miss.

## **VE TEST SESSION**

Beaver County Emergency Operations Center  
351 14th Street  
Ambridge, PA 15003

Tests begin 5PM Thursday, Sept 11th (walk-ins allowed).  
All classes of amateur radio license tests will be administered.

All candidates should bring ALL of the following:

1. Two (2) forms of identification. One should be a Photo ID.
2. A pencil and a blue or black pen.
3. Your original AND a photocopy of your current license (if any).
4. Your original AND a photocopy of any C.S.C.E's (if any).
5. The test fee of \$15.00.

For more information, please contact:

Chris Moratis, W3OUF  
1199 Highland Avenue  
Ambridge, PA 15003  
PHONE: 724-266-2866  
cjmoratis@gmail.com

## **WEEKLY**

## **Thursday Morning Breakfast**

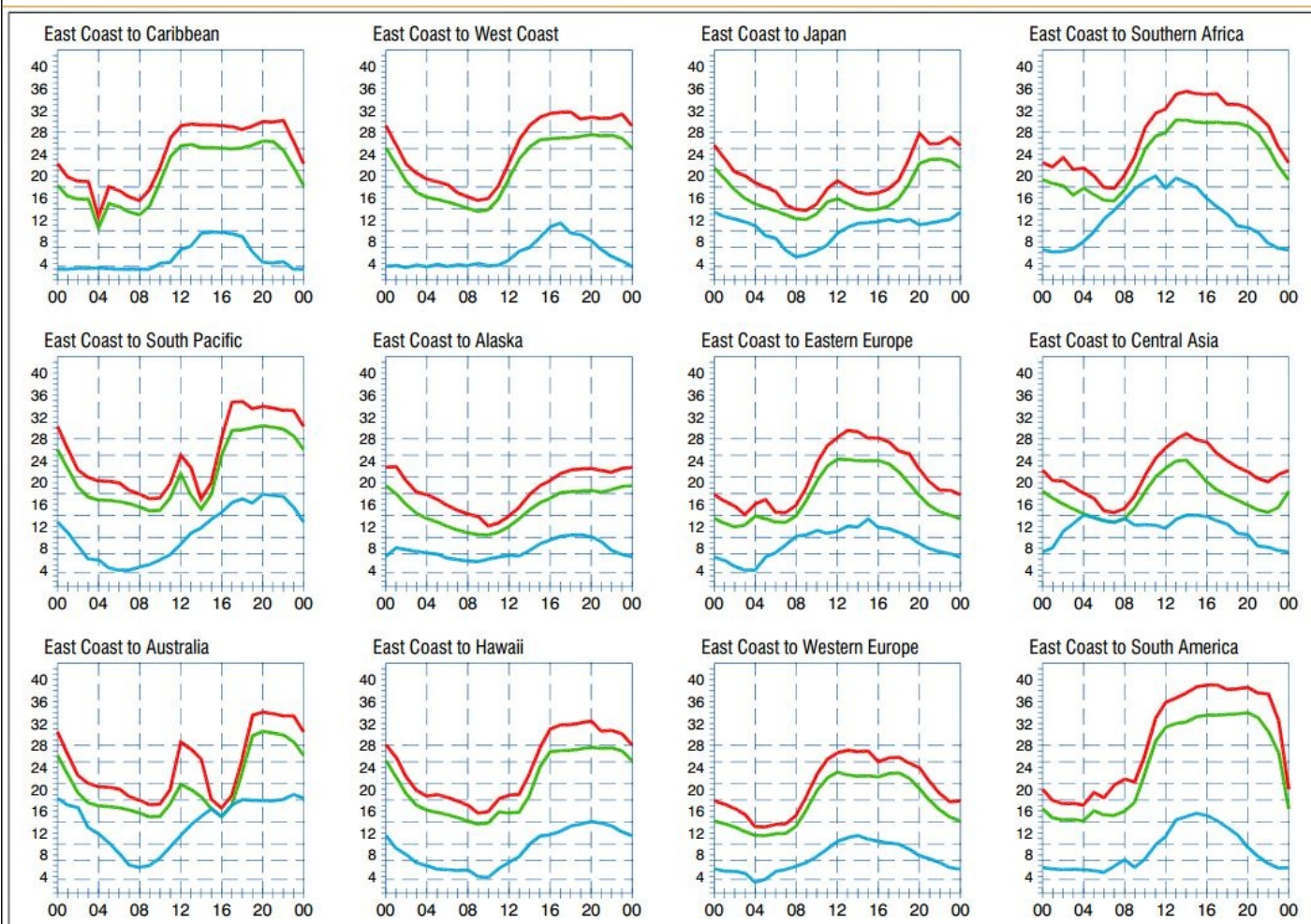
The BVARA meets every Thursday at Steak n Shake in Center Township, by the Beaver Valley Mall, at 10:00 AM. All area amateurs are invited and encouraged to attend the Thursday Morning Breakfast. See you at Steak n Shake!





# Propagation Charts

From the ARRL



## PROPAGATION

The East Coast propagation chart listed above is for August 2014.

If you would like more information on how to read these charts, or for more information on propagation in general, please visit <http://arrl.org/propagation>

## RACES / ARES

### eQRM Urges All County Hams to Participate

As a matter of editorial opinion, the eQRM urges all Beaver County licensed amateurs to participate in the County's RACES and ARES programs. Any Beaver County Amateur that is interested in participating in the RACES/ARES programs can do so by checking into the Beaver County Public Service Net which meets every Monday evening at 8:30 PM local time on the N3TN 146.850 MHz repeater (131.8 PL)



# Who We Are

Membership Information and Club Officers

BY BECOMING A MEMBER OF THE BVARA, YOU CAN HELP SECURE THE FUTURE OF AMATEUR RADIO IN BEAVER COUNTY. ADDITIONALLY, THE BVARA RECEIVES A PORTION OF EACH ARRL AND/OR WORLD RADIO SUBSCRIPTION YOU PURCHASE!

## Join the BVARA, ARRL and World Radio

Sign up for:	Price	Quantity
<input type="checkbox"/> BVARA FULL MEMBERSHIP	20.00	
<input type="checkbox"/> BVARA STUDENT MEMBERSHIP	15.00	
<input type="checkbox"/> BVARA ASSOCIATE MEMBERSHIP	10.00	
<input type="checkbox"/> CHILD UNDER 21 IN HOME	5.00	
<input type="checkbox"/> ONE YEAR ARRL MEMBERSHIP	39.00	

ARRL MEMBER? YES NO Subtotal: \_\_\_\_\_  
Donation: \_\_\_\_\_  
Total: \_\_\_\_\_

Your License Class (if any):

☐ Novice Name \_\_\_\_\_  
☐ Technician Address \_\_\_\_\_  
☐ General \_\_\_\_\_  
☐ Advanced Email Address \_\_\_\_\_  
☐ Extra Phone \_\_\_\_\_

Your Call Sign: \_\_\_\_\_ Exp. date \_\_\_\_\_

Signature \_\_\_\_\_

Make Check or Money order payable to:  
The Beaver Valley Amateur Radio Association, P.O. Box 424  
South Heights, PA 15081

### 2014 BVARA OFFICERS

President: Jack Spencer, KZ3Z  
Vice President: Jeff Waite, K3SLK  
Second Vice Pres.: Mark Kavic, KB3LED  
Treasurer: Pam Spencer, W3PMS  
Secretary: Norm Trunick, K3NJT  
Director: George Caffro, N3HOJ  
Director: Denny Herbuth, KR3DX  
Trustee: Rich Soltesz, K3SOM  
Newsletter Editor: Denny Herbuth, KR3DX

### MONTHLY MEETINGS

E-Board meetings are now held the Saturday before the monthly club meeting.

VE testing begins at 5:00.

Regular meetings are at 6:30.

All meetings are held at  
Beaver County  
Emergency Operations Center  
351 14th Street  
Ambridge, PA 15003  
on the second Thursday of every month (unless otherwise stated).

### MEETING DATES

#### 2014

September 11  
October 9  
November 13  
December - No meeting (Christmas Party)

#### 2015

January 8  
February 12  
March 12  
April 9

QSL CARD  
Special 90th Anniversary Edition

