

# THE eQRM

AUGUST 2016



## The BVARA in Beaver County Pennsylvania

Beaver Valley Amateur Radio Association

W3SGJ

Repeater 145.310 PL 131.8

## On the cover :

Here are some yummy looking ears of corn for a Corn Roast. Read more on Page 4 inside.

## Inside this edition

<b>Who We Are</b>	<b>3</b>	<b>Hamfests &amp; General Announcements</b>	<b>10</b>
<b>This Month</b>	<b>4</b>		
<b>Propagation</b>	<b>6</b>	<b>Radio Sport</b>	<b>11</b>
<b>Get a license or Upgrade</b>	<b>7</b>	<b>Bits and Pieces</b>	<b>12</b>
<b>New license and Upgrades</b>	<b>8</b>	<b>Interesting links</b>	<b>14</b>
<b>Membership</b>	<b>9</b>		

### Check into our nets

#### Wednesday 2 Meter

**8:30PM on 145.310 MHz PL 131.8**

#### Wednesday 10 Meter

**9:00PM on 28.470 MHz**

The eQRM is a publication of the Beaver Valley Amateur Radio Association (BVARA) and is Copyright 2010 - 2016. All material presented in this publication is not necessarily the views of the American Radio Relay League (ARRL), BVARA, or members of the said organizations. If you would like to contact the editor of the eQRM, please email David at [kc3bxc.73@gmail.com](mailto:kc3bxc.73@gmail.com). Please visit us online at [www.W3SGJ.org](http://www.W3SGJ.org). To subscribe to our newsletter, please visit [W3SGJ.org/newsletter.php](http://W3SGJ.org/newsletter.php)

# Who We Are

## 2016 BVARA OFFICERS

President: Jack Spencer, KZ3Z

Vice President: Dick Hanna, K3VYY

2nd Vice Pres.: Rob Miller, N3OJL

Treasurer: Pam Spencer, W3PMS

Secretary: Norm Trunick, K3NJT

Director: Bob Winkle, N3AZZ

Director: Bob Croft, KB3RHN

Trustee: Rich Soltesz, K3SOM



## MONTHLY MEETINGS

E-Board meetings are now held the Saturday before the monthly club meeting.

VE testing begins at 5:00 PM.

Regular meetings are at 6:30 PM

All meetings are held at  
Beaver County  
Emergency Services Center  
351 14th Street  
Ambridge, PA 15003  
on the second Thursday of every month  
(unless otherwise stated).

## 2016 MEETING DATES

\*Aug no meeting

Corn Roast Aug 20th

Sep 08

Oct 13

Nov 10

Dec no meeting

Christmas Party Dec 3rd

## 2017 MEETING DATES

Jan 12

Feb 09

Mar 09





# This Month

## BVARA Corn Roast



**Join our Beaver Valley Amateur Radio Association celebration of summer!**

- When:** Saturday, August 20<sup>th</sup>, 2016 at 5:30 pm
- Where:** Old Economy Park, Shelter 4 (enter the park and turn right at the swimming pool)
- Who:** All BVARA members and their families and invited guests
- What:** Club furnishes the corn, hot dogs, and hamburgers – please bring a home-baked dessert and your beverages. All home-brought foods are optional, but home-made extras add to the deliciousness. Coffee, iced tea/canned pop and bottled water will be available.

**Email:** [mntrunick@yahoo.com](mailto:mntrunick@yahoo.com) or [k3som@arrl.net](mailto:k3som@arrl.net)

- Call Norm, K3NJT at (724) 728-3214
- Call Rich, K3SOM at (724) 847-0610

# More this Month

## Weekly

The Monaca Steak and Shake has a great wait staff. Come let them take your order.

Thursday Morning Breakfast  
(or you can have lunch)



The BVARA meets every Thursday at Steak 'n Shake in Center Township, by the Beaver Valley Mall, at 10:00 AM. All radio amateurs and those interested in amateur radio are encouraged to come join us at our Thursday morning breakfast.



## See you Thursday at

RACES / ARES

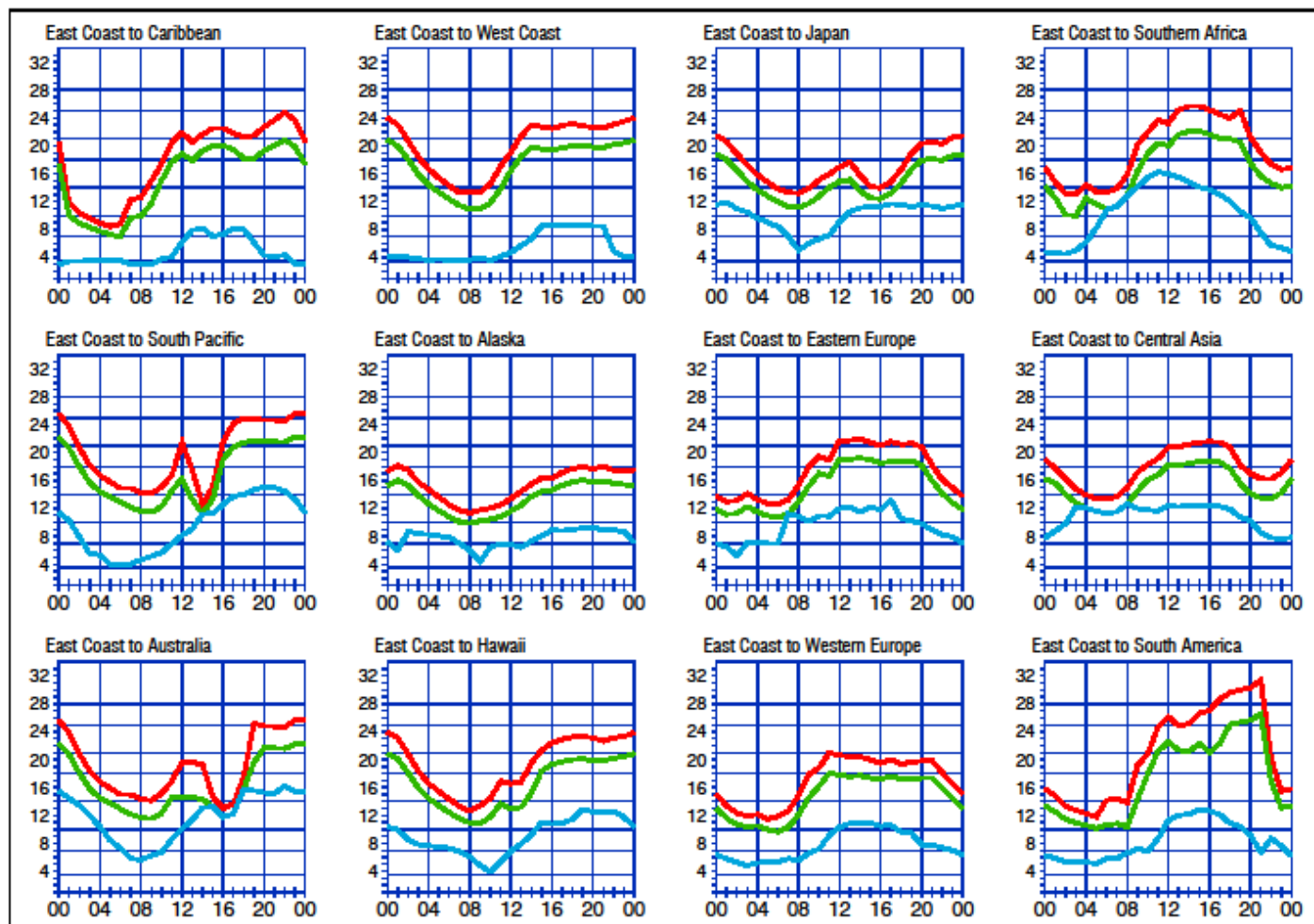
The eQRM Urges All County Hams to Participate.



The eQRM urges all Beaver County licensed amateurs to participate in the County's RACES and ARES programs.

Any Beaver County Amateur that is interested in participating in the RACES/ARES programs can do so by checking into the Beaver County Public Service Net which meets every Monday evening at 8:30 PM local time on the N3TN 146.850 MHz repeater (131.8 PL)

# Propagation



**When are the bands open?** These charts, generated using CAPman, show probabilities for average HF propagation in the month of **August** for the paths indicated. The horizontal axes show Coordinated Universal Time (UTC), and the vertical axes frequency in MHz. On 10% of the days of this period, the highest frequencies propagated will be at least as high as the upper red curves (HFF, highest possible frequency) and on 50% of the days they will be at least as high as the green curves (MUF, classical maximum usable frequency). The blue curves show the lowest usable frequency (LUF) for a 1500-W CW transmitter. For SSB or a lower transmitter power, the LUF will be somewhat higher than the blue curves indicate. See Oct 1994 *QST*, pp 27-30, and Feb 1995 *QST*, pp 34-36, for more details. The predictions assume an observed 2800-MHz solar flux value of 81. This is a **Low** level of solar activity. See the detailed propagation tables on *The ARRL Antenna Book CD-ROM*.

## PROPAGATION

The East Coast propagation chart listed here is for August 2016.

If you would like more information on how to read these charts, or for more information on propagation in general, please visit <http://arrl.org/propagation>

# Get your License or Upgrade

If you are interested in getting your first FCC license or upgrading your current amateur radio license, the Beaver Valley Amateur Radio Association holds VE Test sessions (Volunteer Examinations) the second Thursday of each month at the Nine One One center in Ambridge Pennsylvania prior to our BVARA Club meeting. If there is no meeting there is no test session. Please come take your test with us!

For more information, contact :  
Rich Soltesz, K3SOM  
(724) 847-0610  
k3som@arrl.net



## VE TEST SESSIONS

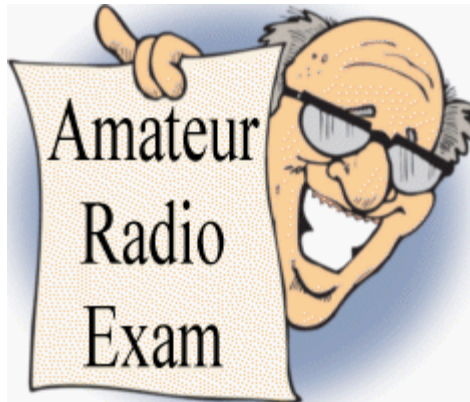
Beaver County Emergency Services Center 351 14th Street Ambridge, PA 15003.  
Tests begin promptly at 5 pm on the same day as BVARA Club Meetings  
(the second Thursday of the month).  
All classes of amateur radio license tests are administered.

ALL candidates MUST bring ALL of the following:

1. 2 forms of I.D. - one MUST be a photo I.D.
2. A pencil AND a pen with blue or black ink.
3. The original AND a photocopy of any valid ham license.
4. The original AND a photocopy of any C.S.C.E.
5. The test fee of \$15 - cash, check, or money order.

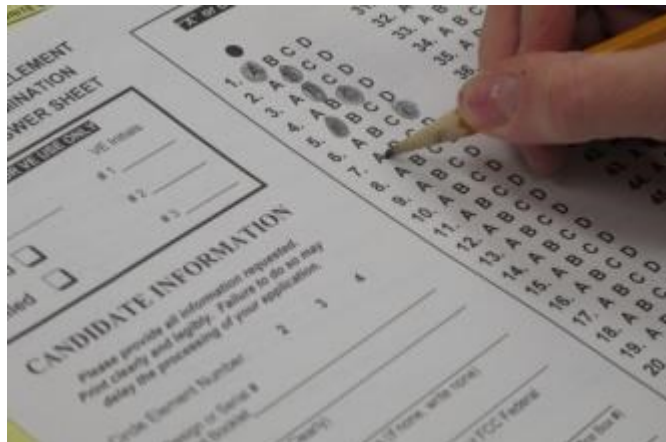
# New License and Upgrades

BVARA VE Testing



Fred Buecker - KC3HMS from Ambridge, PA passed his Technician Class exam at our July testing session.

No BVARA Club meeting for the month of August, so no testing this month. Please come to the 8 September test session.





# Membership Information

By becoming a BVARA member you help secure the future of Amateur Radio in Beaver County. Additionally, the BVARA receives a portion of each ARRL

membership you purchase!

## Join the BVARA and ARRL

### Sign up for:

### Price

- |                                                                  |       |       |
|------------------------------------------------------------------|-------|-------|
| <input type="checkbox"/> BVARA full membership                   | 20.00 | _____ |
| <input type="checkbox"/> BVARA student membership                | 15.00 | _____ |
| <input type="checkbox"/> BVARA associate membership              | 10.00 | _____ |
| <input type="checkbox"/> BVARA Child under 21 at home membership | 5.00  | _____ |
| <input type="checkbox"/> One year ARRL membership                | 49.00 | _____ |

A Club Donation \_\_\_\_\_

ARRL Member?      Yes      No

Total    Enclosed    \_\_\_\_\_

### Your License Class (If you have one.)

- |                                      |               |
|--------------------------------------|---------------|
| <input type="checkbox"/> Technician  | Name _____    |
| <input type="checkbox"/> General     | Address _____ |
| <input type="checkbox"/> Advanced    | _____         |
| <input type="checkbox"/> Extra Class | Email _____   |

Phone \_\_\_\_\_

Your Call sign \_\_\_\_\_

Your Signature \_\_\_\_\_

Make check or money order payable to:

The Beaver Valley Amateur Radio Association, P.O. Box 424

South Heights, Pa 15081

# Hamfests & General Announcements



## 2016 SKYVIEW RADIO SOCIETY SWAP N SHOP!

SUNDAY AUGUST 28, 2016

LOCATED AT OUR CLUB GROUNDS NEAR NEW KENSINGTON PA

Aprox 13 miles northeast of Pittsburgh

2335 Turkey Ridge Road

New Kensington, PA 15068

Talk-in 146.640- 131.8pl

Admission \$5.00 – Table space is \$5.00 (Bring your own table)

Great prizes

Door prizes

Begali CW key raffle (Palladium/gold Graciella Jr)

Breakfast and lunch served

Get your Skyview Burger and your Skyview Dipole Hotdog!

Contact: John Italiano WA3KFS - 724-339-3821

[www.skyviewradio.net](http://www.skyviewradio.net)

Location is near the intersection of Rt. 366 and Rt. 380

**From Apollo / Leechburg:** Take Rt. 66 S to Rt. 380. Take 380 W to Rt. 366. Take Rt. 366 W (toward New Kensington) to the end of the 4 lane. Go ¼ mile past the end of the 4 lane. Turn right on Whitten Hollow Road. Go about ¼ mile to first stop sign. Turn right on Turkey Ridge Road. Go about ¼ mile to top of hill. Skyview is on the left.

**From New Kensington:** Take Rt. 366 E. Go about 5 miles from the Parnassas area. Look for the Hannan Building on the left. Go about 100 yards past the Hannan Building (If you get to the 4 lane, you went too far). Turn left on Whitten Hollow Road. Go about ¼ mile to first stop sign. Turn right on Turkey Ridge Road. Go about ¼ mile to top of hill. Skyview is on the left.

**From Monroeville / Parkway:** Take Rt. 286 E to Rt. 380 E. Take Rt. 380 E to Rt. 366. Take Rt. 366 W (toward New Kensington) to the end of the 4 lane. Go ¼ mile past the end of the 4 lane. Turn right on Whitten Hollow Road. Go about ¼ mile to first stop sign. Turn right on Turkey Ridge Road. Go about ¼ mile to top of hill. Skyview is on the left.

**From Greensburg:** Take Rt. 66 N to Rt. 366. Take Rt. 366 W (toward New Kensington). Cross over Route 380 and then go to the end of the 4 lane. Go ¼ mile past the end of the 4 lane. Turn right on Whitten Hollow Road. Go about ¼ mile to first stop sign. Turn right on Turkey Ridge Road. Go about ¼ mile to top of hill. Skyview is on the left.

## Contest Corral – August 2016

Check for updates and a downloadable PDF version online at [www.arrl.org/contests](http://www.arrl.org/contests).

Refer to the contest websites for full rules, scoring information, operating periods or time limits, and log submission information.

	Start - Finish Date-Time	Start - Finish Date-Time	Bands	Contest name	Mode	Exchange	Sponsor's Website
1	0100	1 0300	3.5-28	ARS Spartan Sprint	CW	RST, SPC, power	<a href="http://www.arsqp.blogspot.com">www.arsqp.blogspot.com</a>
1	1700	1 2100	7-28	ARS Flight of the Bumblebees	CW	RST, SPC, power or bumblebee nr	<a href="http://www.arsqp.blogspot.com">www.arsqp.blogspot.com</a>
4	1700	4 2100	28	NRAU 10 Meter Activity Contest	CW Ph Dig	RS(T), 6-char grid square	<a href="http://www.nrau.net/activity-contests">www.nrau.net/activity-contests</a>
6	0000	6 2359	1.8-50	TARA Grid Dip Shindig	Dig	Name, 4-char grid square	<a href="http://www.r2ty.org">www.r2ty.org</a>
6	0001	7 2359	28	10-10 International Summer Contest, SSB	Ph	Name, mbr or "0," SPC	<a href="http://www.10n-10n.org">www.10n-10n.org</a>
6	1200	6 2359	1.8-28	European HF Championship	CW Ph	RS(T), 2-digit year first licensed	<a href="http://ea.hamradio.si/~sco/suhf">ea.hamradio.si/~sco/suhf</a>
6	1400	6 1800	144	WAB 144 MHz Low Power Phone	Ph	RS, serial, WAB square or country	<a href="http://wab.intsemip.net">wab.intsemip.net</a>
6	1800	7 0559	1.8-28	North American QSO Party, CW	CW	NA: Name, SPC. Non-NA: Name	<a href="http://www.ncjweb.com/NAQP-Rules.pdf">www.ncjweb.com/NAQP-Rules.pdf</a>
6	1800	7 1800	222 and up	August UHF Contest	CW Ph Dig	4-char grid square	<a href="http://www.uhfcontest.org/uhfrules.htm">www.uhfcontest.org/uhfrules.htm</a>
7	1300	7 1630	3.5-14	SARL HF Phone Contest	Ph	RS, serial	<a href="http://www.sarl.org.za">www.sarl.org.za</a>
10	0030	10 0230	3.5-14	NAQCC CW Sprint	CW	RST, SPC, mbr or power	<a href="http://naqcc.info/sprint201608.html">naqcc.info/sprint201608.html</a>
10	1900	10 2000	3.5	RSGB 80 Meter Club Sprint, CW	CW	Other's call, your call, serial, name	<a href="http://www.rsqcc.org/hf">www.rsqcc.org/hf</a>
11	2200	13 2200	144	144 MHz Meteorscatter Sprint	CW Ph Dig	Signal report	<a href="http://www.mmmomwhf.de/testinfo.php">www.mmmomwhf.de/testinfo.php</a>
13	0000	14 2359	3.5-28	WAE DX Contest, CW	CW	RST, serial	<a href="http://darc.de/referate/dxcontest/waed/en">darc.de/referate/dxcontest/waed/en</a>
13	1200	14 2359	1.8-50	SKCC Weekend Sprintathon	CW	RST, SPC, name, mbr or "none"	<a href="http://www.skccgroup.com">www.skccgroup.com</a>
13	1800	14 2359	1.8-144, 432	Maryland-DC QSO Party	CW Ph Dig	Category, county/city or SPC	<a href="http://mdqsoparty.us3vpr.org">mdqsoparty.us3vpr.org</a>
13	2300	14 0300	50	50 MHz Fall Sprint	CW Ph	4-char grid square	<a href="http://svhfs.org">svhfs.org</a>
20	0000	21 1800	3.5-28	SARTG WW RTTY Contest	Dig	RST, serial	<a href="http://www.sartg.com">www.sartg.com</a>
20	0600	21 2359	10 GHz to light	ARRL 10 GHz and Up Contest	CW Ph Dig	6-char grid square	<a href="http://www.arrl.org/10-ghz-up">www.arrl.org/10-ghz-up</a>
20	0800	21 0800	1.8-28	Russian District Award Contest	CW Ph	RS(T), District code or serial	<a href="http://rdaward.org/rdact.htm">rdaward.org/rdact.htm</a>
20	1200	21 1200	3.5-28	Himalayan Contest	CW Ph	RS(T), VU State or power	<a href="http://arsi.info/contests">arsi.info/contests</a>
20	1800	21 0559	1.8-28	North American QSO Party, SSB	Ph	Name, SPC. Non-NA: Name	<a href="http://www.ncjweb.com/NAQP-Rules.pdf">www.ncjweb.com/NAQP-Rules.pdf</a>
20	2000	20 2159	1.8-50	Fold Hall Sprint	Dig	RST, mbr, SPC, grid	<a href="http://sites.google.com/site/foldhallclub">sites.google.com/site/foldhallclub</a>
20	2100	21 2100	3.5-28	CVA DX Contest, CW	CW	RST, category	<a href="http://www.cvae.org">www.cvae.org</a>
21	1300	21 1630	3.5-14	SARL HF Digital Contest	Dig	RST, serial	<a href="http://www.sarl.org.za">www.sarl.org.za</a>
21	1800	21 2359	3.5-50	ARRL Rookie Roundup, RTTY	Dig	Name, 2-digit year first licensed, SPC	<a href="http://www.arrl.org/rookie-roundup">www.arrl.org/rookie-roundup</a>
22	0100	22 0300	1.8-28	Run for the Bacon QRP Contest	CW	RST, SPC, mbr or power	<a href="http://qrpcontest.com/pigrun">qrpcontest.com/pigrun</a>
24	0000	24 0200	1.8-28	SKCC Sprint	CW	RST, SPC, name, mbr or power	<a href="http://www.skccgroup.com">www.skccgroup.com</a>
25	1900	25 2000	3.5	RSGB 80 Meter Club Sprint, SSB	Ph	Other's call, your call, serial, name	<a href="http://www.rsqcc.org/hf">www.rsqcc.org/hf</a>
27	0400	28 1359	3.5-14	ALARA Contest	CW Ph	RS(T), serial, mbr (if any), name	<a href="http://www.alara.org.au/contests">www.alara.org.au/contests</a>
27	0400	29 0400	1.8-28	Hawaii QSO Party	CW Ph Dig	Hi: RS(T), QTH ID. Others: RS(T), SPC	<a href="http://www.hiqsoparty.org">www.hiqsoparty.org</a>
27	1200	28 0300	1.8-50	WVE Islands QSO Party	CW Ph Dig	RS(T), US/CI/SA island or SPC	<a href="http://usislands.org">usislands.org</a>
27	1200	28 1159	3.5-28	SOC RTTY Championship	Dig	RST, 4-digit year first licensed	<a href="http://ea.hamradio.si/socrtty">ea.hamradio.si/socrtty</a>
27	1200	28 1200	3.5-28	YO DX HF Contest	CW Ph	RS(T), YO county or serial	<a href="http://www.yodx.ro/en/english">www.yodx.ro/en/english</a>
27	1200	28 1200	1.8-50	Keyman's Club of Japan Contest	CW	RST, prefecture/district/continent code	<a href="http://www.kcj-cw.com">www.kcj-cw.com</a>
27	1400	28 2000	3.5-50	Kansas QSO Party	CW Ph Dig	RS(T), county or SPC	<a href="http://ksqsoparty.org">ksqsoparty.org</a>
27	1600	28 0400	3.5-28	Ohio QSO Party	CW Ph	RS(T), county or SPC	<a href="http://www.ohqcp.org">www.ohqcp.org</a>
27	2100	28 2100	3.5-28	CVA DX Contest, SSB	Ph	RS, category	<a href="http://www.cvae.org">www.cvae.org</a>
28	1300	28 1630	3.5-14	SARL HF CW Contest	CW	RST, serial	<a href="http://www.sarl.org.za">www.sarl.org.za</a>

All dates refer to UTC and may be different from calendar dates in North America. Times given as AM or PM are local times and dates.

No contest activity occurs on the 60, 30, 17, and 12 meter bands. Mbr = Membership number. Serial = Sequential number of the contact. S/P/C = State, Province, DXCC Entity. XE = Mexican state. Data for Contest Corral is maintained on the WA7BNM Contest Calendar at [www.homewool.com/contestcal](http://www.homewool.com/contestcal) and is extracted for publication in QST 2 months prior to the month of the contest. The ARRL gratefully acknowledges the support of Bruce Horn, WA7BNM, in providing this service. Listings in blue indicate contests sponsored by ARRL or NCJ. The latest time to make a valid contest QSO is the minute listed in the "Finish Time" column.

# Bits and Pieces

I want to always encourage you to think for a minute before you do anything in your radio hobby. If you think it through you can be very safe. Don't get hurt! If in doubt, stop! Don't be in a big hurry. Get some help. Elmer advice is always worth asking for. You are never too young or too old for safety.

I find all aspects of radio waves fun. I enjoy listening to short wave, air traffic, marine traffic on the near-by Ohio River and Ham radio of course. These are just a few. Any radio signal is worth pursuing to me. I have been interested in radio since I was very young. My brother had an old



radio that had AM, FM and three shortwave settings.



About two years ago I started listening with a medium priced Grundig general coverage radio. I have spent hours listening to that little radio. Some radio waves have been in English, some in another language, some were Morse coded and still others were sounds of digital transmissions.

There are sounds that some consider noise (QRM). These can be radar, light noise, house electric noise, weather related and more. I think it is interesting to explore it all, even the noise (QRM).

One particular Ham QSL that I found interesting was between two older guys. I tuned in just as a young ham was contacting them from his mobile station. At first the two old guys sounded like they were know-it-alls. They were kind of stuck up, not encouraging, distasteful, off-putting, etc. You get the idea. But then one of the older guys said "Wait, we don't mean to sound so arrogant. It's just that we have probably made every mistake you can as a Ham. We want to give you the benefit of learning from our errors without wasting your money or time by making the same blunders."

The QSO went on for quite a while. All three were having a great time. It was then that I decided to become an amateur radio operator. I really enjoyed that Gentlemanly approach they had towards one another. Right then and there it was my goal to become a Gentleman Ham too. As I write this newsletter each month I try to keep that in the front of all that I put here. It is my hope to encourage anyone to become a Ham and enjoy the same



# Bits and Pieces



Gentleman Spirit I have experienced (The same for Gentlewomen Spirit too). It keeps Ham radio interesting to me. It is my perpetual objective to conduct myself in a professional manner as an amateur radio operator. I encourage it to be yours too.

So you know me. I will end with my ever present message of Be Safe. Have fun with your Ham Hobby. Share your knowledge and skills with others.



# Some Interesting Links



KDKA history site      [http://earlyradiohistory.us/KDKA\\_12.htm](http://earlyradiohistory.us/KDKA_12.htm)

Will we talk to Mars      <http://earlyradiohistory.us/mars.htm>

Custom QSL card ordering      <http://photoqsls.com/>

Morse code info      <http://www.morsecode.nl/>

Morse Code Practice      <http://aa9pw.com/morsecode/>

Elmering for the new HAM 24/7      <http://amateurradioclub.net/>

A source of fiberglass poles for DIY antenna building

<https://www.jackite.com/index.php?cPath=41&osCsid=0e10cc57893e40a54b17c44952998491>

# For All Radio Operators



## The Amateur's Code

**CONSIDERATE** ...never knowingly operates in such a way as to lessen the pleasure of others.

**LOYAL** ...offers loyalty, encouragement and support to other amateurs, local clubs, and the American Radio Relay League, through which Amateur Radio in the United States is represented nationally and internationally.

**PROGRESSIVE** ...with knowledge abreast of science, a well-built and efficient station and operation above reproach.

**FRIENDLY** ...slow and patient operating when requested; friendly advice and counsel to the beginner; kindly assistance, cooperation and consideration for the interests of others. These are the hallmarks of the amateur spirit.

**BALANCED** ...radio is an avocation, never interfering with duties owed to family, job, school or community.

**PATRIOTIC** ...station and skill always ready for service to country and community.