

THE eQRM



The BVARA in Beaver County Pennsylvania
wishes you a Merry Christmas.

December 2015

THE eQRM

On the Cover : Photo of the Great Ham Radio Ho Ho.

3

Bulletins
Hamfests and general
announcements

8 & 9

Who We Are
Club officers, meetings and
membership information

4 & 5

This Month
VE testing, Breakfast

10

Bits and Pieces
Interesting extras

6

Propagation Charts
Propagation charts for
the East Coast

11 & 12

Radio Sport
RTTY Rookie Roundup
10 GHz and Up Contest

7

VE Test Results
New Hams and Upgrades

13

Interesting Links

And more

CHECK IN TO THE NETS

Wednesday 2 Meter

8:30PM on 145.310 MHz

Wednesday 10 Meter

9:00PM on 28.470 MHz

The eQRM is a publication of the Beaver Valley Amateur Radio Association (BVARA) and is Copyright 2010 - 2015. All material presented in this publication is not necessarily the views of the American Radio Relay League (ARRL), BVARA, or members of the said organizations. If you would like to contact the editor of the eQRM, please email David at kc3bxc.73@gmail.com. Please visit us online at www.W3SGJ.org. To subscribe to our newsletter, please visit W3SGJ.org/newsletter.php

Bulletins

Hamfests & General Announcements

I'm not very happy about this!



Looks like all the Hamfests in our Western Pennsylvania area are over till next year.

On the bright side, it's a great time to spend some hours operating your radio. Make some new radio friends. Chase some rare DX. Set some goals for your radio interest. You could upgrade your license, try a new mode of operating or teach (elmer) someone about radio. There are many different facets to Amateur Radio, step-out and try something new. Take someone under your wing... Hopefully during the warmer weather you prepared your antennas and radio for the winter season.

As winter comes we will experience some propagation anomaly or radio calamity, so be sure to collect some stories to share with friends at next year's Hamfests.

73 Hamfests 'til next year.

This Month

**No forum or Club Meeting this month,
the BVARA Club
will be at our Christmas Party.**



More this Month

VE TEST SESSIONS

Beaver County Emergency Services Center
351 14th Street
Ambridge, PA 15003

Tests begin at 5PM on second Thursdays, no testing this month (December).

All classes of amateur radio license tests are administered.

Next VE test session - January 14, 2016

ALL candidates MUST bring ALL of the following:

1. 2 forms of I.D. - one MUST be a photo I.D.
2. A pencil AND a pen with blue or black ink.
3. The original AND a photocopy of any valid ham license.
4. The original AND a photocopy of any C.S.C.E.
5. The test fee of \$15 - cash, check, or money order.

For more information, contact :

Rich Soltesz, K3SOM

(724) 847-0610

k3som@arrl.net



WEEKLY

Thursday Morning Breakfast

The BVARA meets every Thursday at Steak 'n Shake in Center Township, by the Beaver Valley Mall, at 10:00 AM. All radio amateurs are encouraged to come join us at our Thursday morning breakfast.

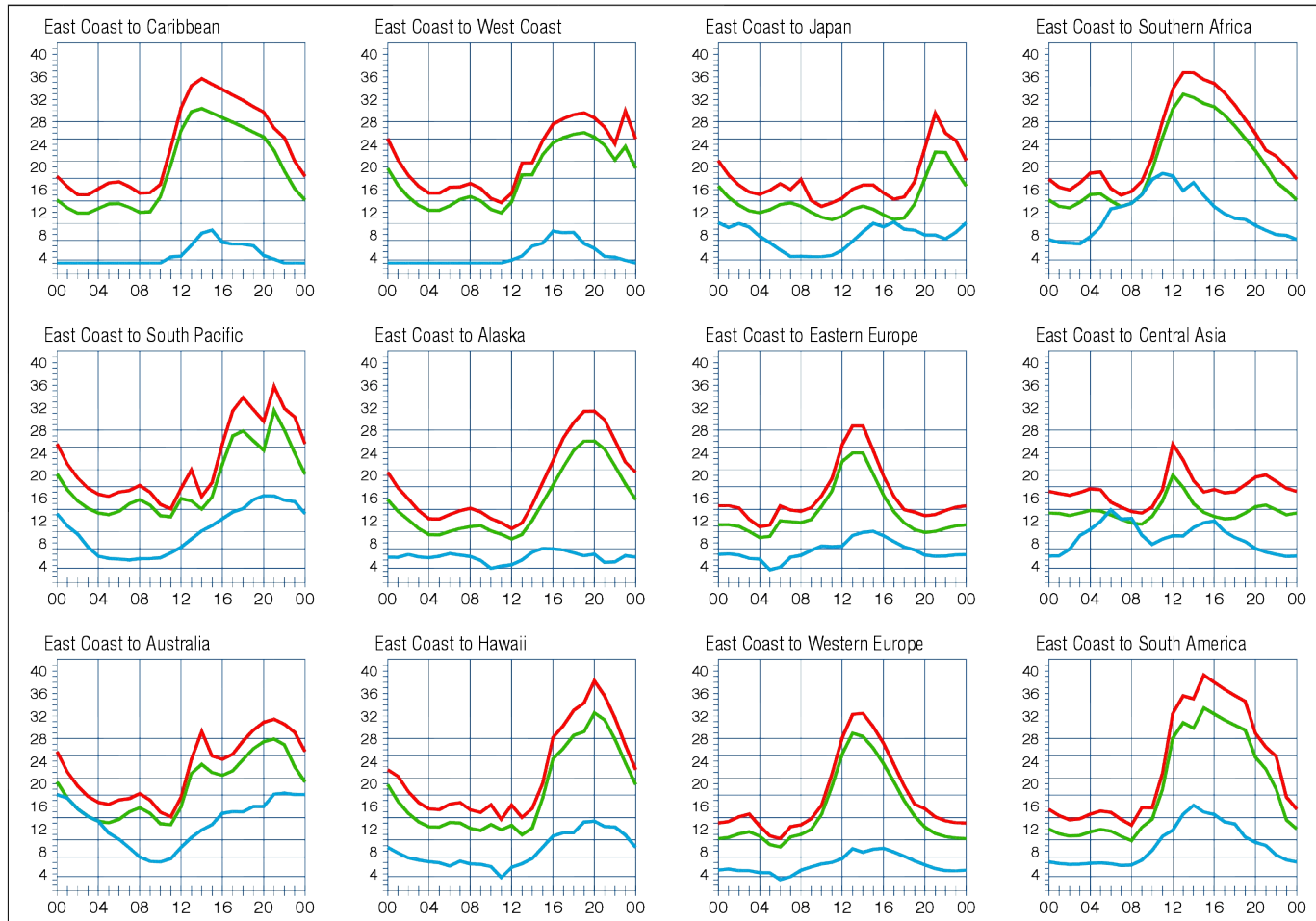


See you at



Propagation Charts

From the ARRL



When are the bands open? These charts, generated using CAPman, show probabilities for average HF propagation in the month of **December** for the paths indicated. The horizontal axes show Coordinated Universal Time (UTC), and the vertical axes frequency in MHz. On 10% of the days of this period, the highest frequencies propagated will be at least as high as the upper red curves (HPF, highest possible frequency) and on 50% of the days they will be at least as high as the green curves (MUF, classical maximum usable frequency). The blue curves show the lowest usable frequency (LUF) for a 1500-W CW transmitter. For SSB or a lower transmitter power, the LUF will be somewhat higher than the blue curves indicate. See Oct 1994 *QST*, pp 27-30, and Feb 1995 *QST*, pp 34-36, for more details. The predictions assume an observed 2800-MHz solar flux value of 104. This is a **Medium** level of solar activity. See the detailed propagation tables on *The ARRL Antenna Book CD-ROM*.

PROPAGATION

The East Coast propagation chart listed above is for December 2015. If you would like more information on how to read these charts, or for more information on propagation in general, please visit <http://arrl.org/propagation>

RACES / ARES

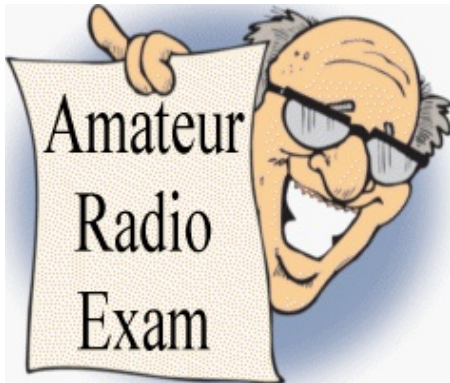
eQRM Urges All County Hams to Participate

As a matter of editorial opinion, the eQRM urges all Beaver County licensed amateurs to participate in the County's RACES and ARES programs.

Any Beaver County Amateur that is interested in participating in the RACES/ARES programs can do so by checking into the Beaver County Public Service Net which meets every Monday evening at 8:30 PM local time on the N3TN 146.850 MHz repeater (131.8 PL)

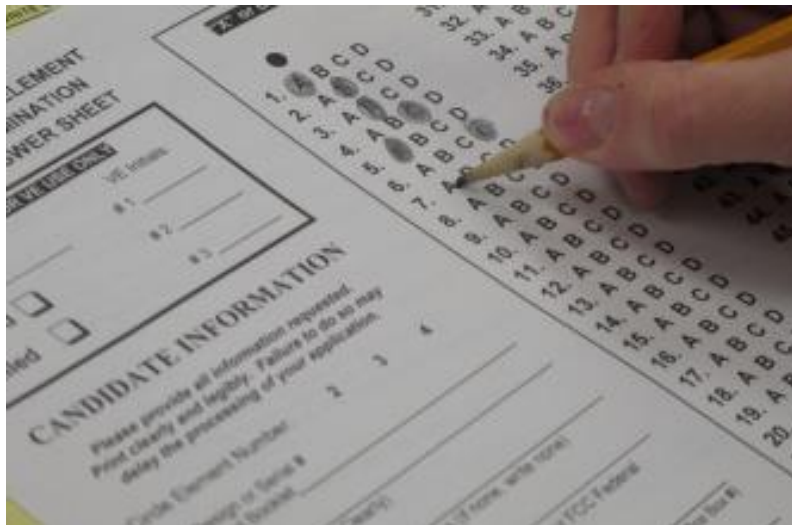


New License and Upgrades BVARA VE Testing



Our newest ham from the November BVARA VE session is

Bryan Haggard - KC3FYG from Washington, PA.



Who We Are

Membership Information and Club Officers



2015 BVARA OFFICERS

President: Jack Spencer, KZ3Z

Vice President: Dick Hanna, K3VYY

2nd Vice Pres.: Rob Miller, N3OJL

Treasurer: Pam Spencer, W3PMS

Secretary: Norm Trunick, K3NJT

Director: Bob Winkle, N3AZZ

Director: Jeff Waite, K3SLK

Trustee: Rich Soltesz, K3SOM

MONTHLY MEETINGS

E-Board meetings are now held the Saturday before the monthly club meeting.

VE testing begins at 5:00.

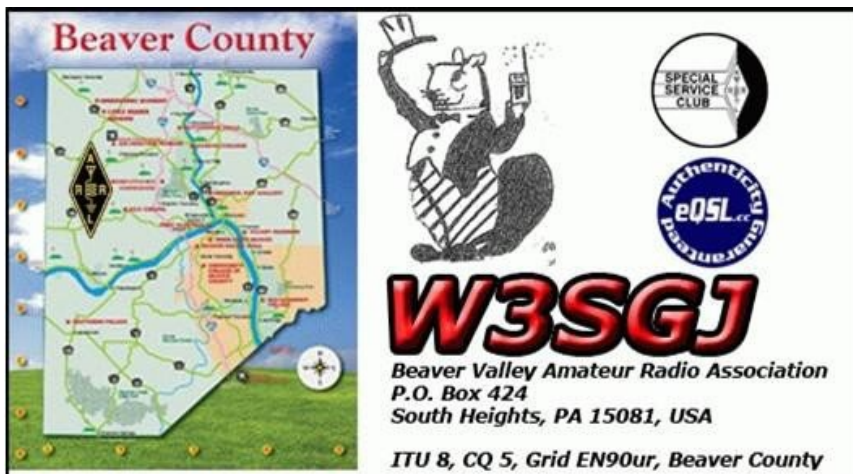
Regular meetings are at 6:30.

All meetings are held at
Beaver County
Emergency Services Center
351 14th Street
Ambridge, PA 15003
on the second Thursday of every
month
(unless otherwise stated).

MEETING DATES 2015

Dec 06 Sunday 5-9 PM
Club Christmas Party
(No club meeting till Jan 2016)

Jan 14 2016
Feb 11
Mar 10
Apr 14
May 12
Jun 09
Jul 14
Aug 11



Membership Information

By becoming a Member of the BVARA, You can help secure the future of Amateur Radio in Beaver County. Additionally, the BVARA receives a portion of each ARRL Membership you purchase!

Join the BVARA and ARRL

Sign up for:	Price	Quantity
<input type="checkbox"/> BVARA FULL MEMBERSHIP	20.00	_____
<input type="checkbox"/> BVARA STUDENT MEMBERSHIP	15.00	_____
<input type="checkbox"/> BVARA ASSOCIATE MEMBERSHIP	10.00	_____
<input type="checkbox"/> CHILD UNDER 21 IN HOME	5.00	_____
<input type="checkbox"/> ONE YEAR ARRL MEMBERSHIP	39.00	_____
	DONATION	_____
ARRL MEMBER ? YES NO	TOTAL	_____

Your license class (If you have one)

<input type="checkbox"/> Technician	Name _____
<input type="checkbox"/> General	Address _____
<input type="checkbox"/> Advanced	_____
<input type="checkbox"/> Extra	Email _____
	Phone _____

Your Call sign _____ Exp.date _____

Your Signature _____

Make check or money order payable to:
The Beaver Valley Amateur Radio Association, P.O. Box 424
South Heights, Pa 15081

Bits and Pieces



Operating a Ham Station has been such a privilege for me.

On-air, at Ham breakfasts, club meetings and at Hamfests I have met many Amateurs that bring alive the same feeling by what they say to me.



Here in America we are blessed to have many active Hams. It has been my experience that there is always someone to talk to. We benefit from our licensed privileges and should follow a code of ethics. We have a voice in the rule making by being in a free country where our voices can be heard.

With our privileges come responsibility and a professionalism. We serve our fellow countrymen; I constantly hear of Hams that volunteer in emergency situations to help with communications. Recent forest fires out west come to my mind as examples of Hams that make me proud. I also hear



about volunteer hams providing communications support during fund raising events like bicycle marathons and running (foot race) marathons. The volunteers provide check point communications. The amateur radio operator's support is really important if someone gets injured or just has a broken bicycle and is in need of a lift. These hams also keep the people in charge of the event informed of how things are going.

We must follow national as well as international operating procedures and a code of ethics. If we do not, we should expect correction from

fellow hams.

Amateur radio groups work together to ensure an orderly use of the privileges we have been granted as ham radio operators. This is also true for most amateur radio operators in countries all over the world.

Our goal is to operate as Ladies and Gentlemen. I am proud to be a part of this consortium and continue to foster this attitude with all fellow Hams.



Have a Merry Christmas.

As always my motto

is...

Safety! Safety!Safety!



Radio Sport

Results from the BVARA 2015 Field Day Event can be found on Page 80 of the December 2015 issue of QST in the first column approximately an inch and three quarters from the top. Our designation is Beaver Valley ARS with the call sign of W3SGJ. Our total number of QSOs was 260, our power output was less than 150W. We had 15 participants and our ARRL total score (including bonus points and ARRL section) was 1,312 WPA...and it rained!

- December 2015 Contests -

ARRL160 Meter CW Contest December 4-6, 2015

Starts 2200 UTC Friday, ends 1600 UTC Sunday . This is a forty-two hour period with no time limitation.

Objective: For Amateurs worldwide to exchange information with W/VE amateurs on 160-meter CW. DX-to-DX QSOs do not count for contest credit. Stations located in overseas and non-contiguous U.S. Territories may be worked by DX stations. This includes Alaska KL7, the Caribbean US possessions KP1-KP5, and all of the Pacific Ocean territories KH0-KH9, including Hawaii KH6. These stations can work BOTH domestic stations (US and VE) as well as DX stations around the world. Check your software before the contest to be sure it will accept these QSOs.

10 Meter ARRL CW & Phone Contest December 12-13, 2015

Second full weekend of December. Starts 0000 UTC Saturday; runs through 2359 UTC Sunday

For Amateurs worldwide to exchange QSO information with as many stations as possible on the 10 meter band.

ARRL CW Rookie Roundup December 20, 2015

The third Sunday of December from 1800 UTC through 2359 UTC (CW)

The Rookie Roundup will be Sunday, 20 December, using CW. This is a great way to try out contesting in an event designed for newcomers.

For more information go to the ARRL web site with the Keywords: "contest calendar"

<http://www.arrl.org/contest-calendar>

Radio Sport

Contest Corral — December 2015

Check for updates and a downloadable PDF version online at www.arrl.org/contests.

Refer to the contest websites for full rules, scoring information, operating periods or time limits, and log submission information.

Start Date-Time	Finish Date-Time	Bands	Contest name	Mode	Exchange	Sponsor's Website
3 0000	3 0600	1.8	QRP ARCI Topband Sprint	CW Ph	RST, SPC, mbr, or power	www.qrparci.org
3 1800	3 2200	28	NRAU 10m Activity Contest	CW Ph Dig	RS(T), 6-ch grid square	www.nrau.net/activity-contests
4 2200	6 1600	1.8	ARRL 160 Meter Contest	CW	RST, ARRL/RAC Section	www.arrl.org/160-meter
5 0000	5 2359	1.8-28	TARA RTTY Melee	Dig	W/VE: RST, SP DX: RST, serial	www.n2ty.org/seasons
5 0600	5 0800	7, 14	Wake-Up! QRP Sprint	CW	RST, serial, suffix of previous QSO	qrp.ru/contest/wakeup
5 1600	6 1559	3.5-28	TOPS Activity Contest	CW	RST, serial, TOPS club (if any)	www.yo2rr.ro/TAC%20Rules.html
5 2300	13 2300	1.8-7	AWA Bruce Kelley 1929 QSO Party	CW	RST, name, QTH, eqpt year, xmtr type	www.antiquewireless.org
6 0000	6 2359	28	Ten-Meter RTTY Contest	Dig	W/VE: RST, state/province. DX: RST, serial	www.rttycontesting.com
6 1300	6 1600	3.5-14	SARL Digital Contest	Dig	RST, serial	www.sarl.org.za
6 2100	6 2259	14	CQC Great CO Snowshoe Run	CW	RST, SPC, antenna, mbr, or power	www.cqc.org/contests
8 0100	8 0300	3.5-28	ARS Spartan Sprint	CW	RST, SPC, power	www.arsqrp.blogspot.com
9 0130	9 0330	3.5-14	NAQCC CW Sprint	CW	RST, SPC, mbr, or power	naqcc.info/sprint201512.html
12 0000	13 2359	28	ARRL 10 Meter Contest	CW Ph	W/VE/XE: RST, state or province. DX: RST, serial	www.arrl.org/10-meter
12 1200	13 2359	1.8-50	SKCC Weekend Sprintathon	CW	RST, SPC, name, mbr, or "none"	www.skccgroup.com
12 1600	13 1559	3.5-28	International Naval Contest	CW Ph	Naval Club member: RS(T), club, mbr. Others: RS(T), serial	www.marinefunker.de
13 2000	13 2359	1.8-28	QRP ARCI Holiday Spirits Homebrew Sprint	CW	RST, SPC, mbr, or power	www.qrparci.org
17 0130	17 0330	3.5-14	NAQCC CW Sprint	CW	RST, SPC, mbr, or power	naqcc.info/sprint201512.html
18 2000	18 2359	1.8	Russian 160 Meter Contest	CW Ph	RS(T), Oblast, or serial	qrz.ru/contest/detail/90.html
18 2100	18 2359	3.5	AGB-Party Contest	CW Ph Dig	RST, serial, mbr (if any)	www.ev5agb.com/contest
19 0000	19 2359	1.8-7,21-50	Feld Hell Sprint	Dig	RST, mbr, SPC, grid	sites.google.com/site/feldhellclub
19 0000	19 2359	3.5-28	OK DX RTTY Contest	Dig	RST, CQ Zone	okrtty.crk.cz
19 0000	19 2359	1.8-144	RAC Winter Contest	CW Ph	RS(T), province/territory, or serial	wp.rac.ca/?s=winter+contest
19 1400	20 1400	1.8-28	Croatian CW Contest	CW	RST, serial	9acw.org/index.php/rules/english
20 1800	20 2359	3.5-50	ARRL Rookie Roundup, CW	CW	Name, 2-digit year first licensed, SPC	www.arrl.org/rookie-roundup
21 0200	21 0400	1.8-28	Run for the Bacon QRP Contest	CW	RST, SPC, mbr, or power	fpqrp.org/pigrun
23 0000	23 0200	1.8-28	SKCC Sprint	CW	RST, SPC, name, mbr, or power	www.skccgroup.com
26 0830	26 1059	3.5, 7	DARC Christmas Contest	CW Ph	RS(T), DOK, or serial	darc.de/referate/dx/contest/xmas/en
26 1200	27 1159	3.5-28	World Wide Iron Ham Contest	CW Ph Dig	RS(T), CQ Zone	ironham.com.br/?page_id=22
26 1500	27 1500	1.8	Stew Perry Topband Challenge	CW	4-ch grid square	www.kkn.net/stew
27 0000	27 1159	3.5-28	RAEM Contest	CW	Serial, latitude, longitude (e.g. 57N 85E)	raem.srr.ru/contest/raem_2014

All dates refer to UTC and may be different from calendar dates in North America. Times given as AM or PM are local times and dates.

No contest activity occurs on the 60, 30, 17, and 12 meter bands. Mbr = Membership number. Serial = Sequential number of the contact. S/P/C = State, Province, DXCC Entity. XE = Mexican state. Data for Contest Corral is maintained on the WA7BNM Contest Calendar at www.hornucopia.com/contestcal and is extracted for publication in QST 2 months prior to the month of the contest. The ARRL gratefully acknowledges the support of Bruce Horn, WA7BNM, in providing this service. Listings in blue indicate contests sponsored by ARRL or NCJ. The latest time to make a valid contest QSO is the minute listed in the "Finish Time" column.

Some Interesting Links

Amateur Radio gifts <http://www.etgiftstore.com/ham-radio-HR001-detail.htm>

Space Weather information <http://www.spaceweather.com/>

Current Solar Data <http://www.n3kl.org/sun/noaa.html>

DX spotting page <http://www.dxsummit.fi/#/>

Amateur Radio Newslines Report <http://www.arnewslines.org/>

Dr. Tamitha Skov Space Weather for Radio Amateurs <http://spaceweather.tv/category/amateur-radio-resources/>

The Amateur's Code

CONSIDERATE ...never knowingly operates in such a way as to lessen the pleasure of others.

LOYAL ...offers loyalty, encouragement and support to other amateurs, local clubs, and the American Radio Relay League, through which Amateur Radio in the United States is represented nationally and internationally.

PROGRESSIVE ...with knowledge abreast of science, a well-built and efficient station and operation above reproach.

FRIENDLY ...slow and patient operating when requested; friendly advice and counsel to the beginner; kindly assistance, cooperation and consideration for the interests of others. These are the hallmarks of the amateur spirit.

BALANCED ...radio is an avocation, never interfering with duties owed to family, job, school or community.

PATRIOTIC ...station and skill always ready for service to country and community.