

THE eQRM

JANUARY 2022



The BVARA in Beaver County Pennsylvania

Beaver Valley Amateur Radio Association

W3SGJ

2M Repeater

145.310

PL 131.8



On the Cover: I want to look forward to 2022 and not look back to the past two years. How about you? May you have many great and wonderful things come your way this year!

Inside this edition

Who We Are	3	Hamfests & General	9
		Announcements	
This Month	4	Bits and Pieces	10
Get a License or Upgrade	6	It's Your Dime	11
New License and Upgrades	7	Of Interest to All	14
Membership	8	Radio Sport	18



Check into our nets

Wednesday 2 Meter

8:30PM on 145.310 MHz PL 131.8

Wednesday 10 Meter

9:00PM on 28.470 MHz

The eQRM is a publication of the Beaver Valley Amateur Radio Association (BVARA) and is Copyright 2010 - 2021. All material presented in this publication is not necessarily the views of the American Radio Relay League (ARRL), BVARA, or members of the said organizations. If you would like to contact the editor of the eQRM, please email David at kc3bxc.73@gmail.com. Please visit us online at www.W3SGJ.org. To subscribe to our newsletter, please visit W3SGJ.org/newsletter.php

Who We Are

2022 BVARA OFFICERS

President: Jack Spencer, KZ3Z

Vice President: Dan Grazulis, KB3VSP

2nd Vice Pres.: Doug Lawrence

Treasurer: Pam Spencer, W3PMS

Secretary: Norm Trunick, K3NJT

Director: Tony Pavilonis, K3AHP

Director: Jim Allen, KC3IXE

Trustee: Doug Hanna, N4YKQ

MONTHLY MEETINGS

E-Board meetings are now held the Saturday before the monthly club meeting.

VE testing begins at 5:00 PM.

Regular meetings are at 6:30 PM

All meetings are held at the
Beaver County
Emergency Services Center
351 14th Street
Ambridge, PA 15003
on the second Thursday of every month
(unless otherwise stated).

Jan 13 2022

Feb 10

Mar 10

Apr 14

May 12

Jun 09

Jul 14

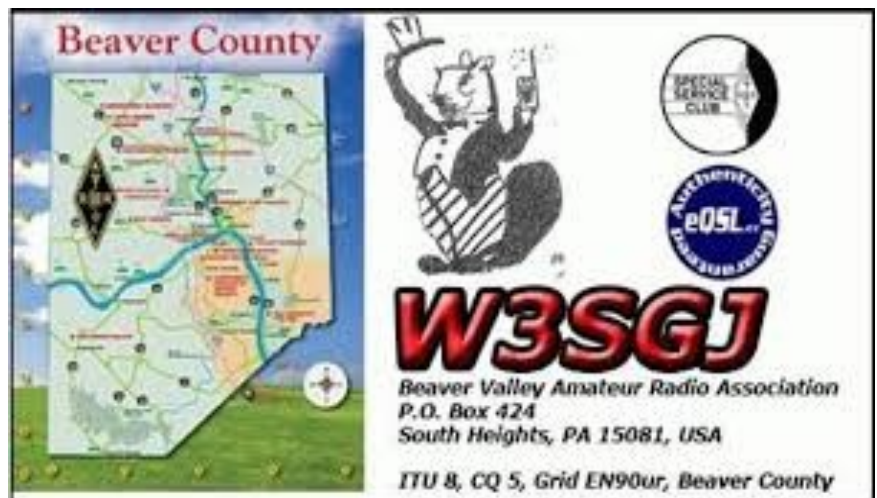
Aug 11

Sep 08

Oct 13

Nov 10

Dec Christmas Party



This Month

This Month:

Speaker:

Rich Soltesz, K3SOM

Topic:

Finding Ham Radio Information

Including:

Continuing with our BVARA Presentation Series this year, with a New Year, it's time to 'up our game' in finding new sources of information for our favorite hobby. Where can we find answers on the Internet to our radio-related questions, cost-effective parts, new techniques, new equipment, new tools, and the newer digital modes?

The answer is from you, our club members and your friends. Some of the topics could include:

- Web sites that list additional URLs relating to the main topic such as the sun and propagation, parts for radio projects, equipment suppliers including distributors, used equipment, digital mode information, etc.
- Web searches
- Videos

We'll begin with web sites that focus on a particular aspect of the hobby with many links. These are good starting points if that is a preferred advantage for you. We'll talk about other techniques as well, including web search techniques and finding quality videos.

But wait, there's more! With your help, main topics with URLs will be placed on our Groups.io page for your convenience. You are encouraged to send your favorite URLs and a one or two sentence description of what can be found there to me so that I can verify that the URL is still available.

This is one exciting presentation that you won't want to miss.

Rich's Background:

Extra Class Ham, Licensed since 1962, VE,
B.S. Electrical Engineering

More this Month

Weekly

The Freedom Square Diner in Monaca has a great wait staff. Come let them take your order.

Thursday Morning Breakfast
(or you can have lunch)

Come join us!



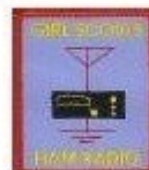
The BVARA meets every Thursday at the Freedom Square Diner in Center Township, just to the right of the Cinemark Center Township Marketplace at 09:30 AM. All radio amateurs and those interested in amateur radio are encouraged to come join us at our Thursday morning breakfast.

**See you
Thursday at**



RACES / ARES

The eQRM Urges All County Hams to Participate.



Get your License or Upgrade

If you are interested in getting your first FCC license or upgrading your current amateur radio license, the Beaver Valley Amateur Radio Association holds VE Test sessions (Volunteer Examinations) the second Thursday of each month at the Beaver County Emergency Services Center in Ambridge Pennsylvania prior to our BVARA Club meeting. If there is no meeting there is no test session. Please come take your test with us!

For more information, contact :
Rich Soltesz, K3SOM
(724) 847-0610
k3som@arrl.net



VE TEST SESSIONS

Beaver County Emergency Services Center 351 14th Street Ambridge, PA 15003.
Tests begin promptly at 5 pm on the same day as BVARA Club Meetings
(the second Thursday of the month).
All classes of amateur radio license tests are administered.



ALL candidates MUST bring ALL of the following:

1. 2 forms of I.D. - one MUST be a photo I.D.
2. A pencil AND a pen with blue or black ink.
3. The original AND a photocopy of any valid ham license.
4. The original AND a photocopy of any C.S.C.E.
5. The test fee of \$15 - cash only.
6. Your FRN Number. (free from the FCC, call for details)

New License and Upgrades

BVARA VE Testing

Testing this month :



December 2021 VE Test Session Results.

We had no December VE Test Session. We were all at the BVARA Christmas Party.

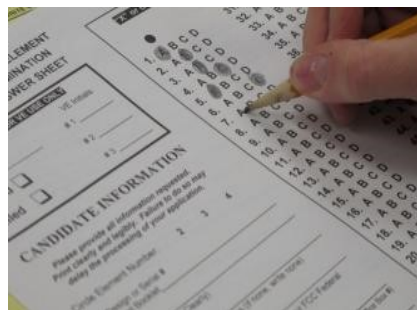
We will resume our testing at our next Club Meeting Session on January 13, 2022.

All of our BVARA testing would not be possible without the help of the following Extra-Class VE Team members:

Reg Genola – W3REG,
Tony Pavilonis – K3AHP,
Mick Pyzoha – N3OJP,
Bart Stack – KB3NFM, and
Bob Winkle – N3AZZ



73 from Rich Soltesz - K3SOM, VE Liaison



Membership Information

By becoming a BVARA member you help secure the future of Amateur Radio in Beaver County. Additionally, the BVARA receives a portion of each ARRL membership you purchase!

Join the BVARA and ARRL

Sign up for:	Price	
<input type="radio"/> BVARA full membership	25.00	_____
<input type="radio"/> BVARA student membership	15.00	_____
<input type="radio"/> BVARA associate membership	10.00	_____
<input type="radio"/> BVARA Child under 21 at home membership	5.00	_____
One year ARRL membership	49.00	_____
A Club Donation		_____
ARRL Member? Yes No	Total Enclosed	_____

Your License Class (If you have one.)

<input type="radio"/> Technician	Name _____
<input type="radio"/> General	Address _____
<input type="radio"/> Advanced	_____
<input type="radio"/> Extra Class	Email _____
	Phone _____
	Your Call sign _____
	Your Signature _____

Make check or money order payable to:

The Beaver Valley Amateur Radio Association, P.O. Box 424
South Heights, Pa 15081

Hamfests & General Announcements

Hamfest?



Still waiting....

The good news is there is one scheduled for February!

Bits and Pieces

Hello everyone,

I am so delighted to be a part of a new year! I am looking forward to some new radio adventures. I have a renewed excitement in my radio hobby. I have a friend that just got his first FCC License. He received his Tech license. He is testing for General the second week in January. He should pass it no problem. I am excited to share what I have learned about “Radio” with him. Even more exciting is what I am anticipating I will learn from him and together with him. How in the world did I get to be an Elmer? I feel like I am still young in the hobby of amateur radio. I have so much to learn about ham radio myself. The more I learn the more I find I have to learn. This hobby is so multifaceted I find it impossible to learn “it all” in one life time.



To someone new to ham radio I appear to have a lot of knowledge. I will be leaning on all of you to help me with questions I can not answer for our new ham buddy. I am going to have so much fun teaching, learning and relearning with Craig. What is it you are excited about with radio this brand-new year?

I am nearly pacing the floor awaiting my opportunity to attend a hamfest. I can hardly wait to walk around and see what’s new from the manufacturers as well as see what the exhibitors offer for sale. I always enjoy the folks I meet as well. I find great pleasure in visiting face to face with a fellow ham I already know or a friend I just met there.

I was reminded that Winter Field Day will be Saturday, January 29, 2022 @ 2:00 pm until Sunday, January 30, 2022 @ 2:00 pm. There will be a few BVARA members participating. Winter Field Day is a bigger challenge than Summer Field Day. The weather conditions in Western Pennsylvania this time of year can make it quite challenging indeed! You can call Rich Soltesz if you are interested in being part of this event or if you desire to support these hardy “Norwegian like” individuals.

Excitement can be contagious. I hope you are infected with some of mine, and the CDC won’t even recommend you get a vaccination to prevent it!

This is it for now, I will share with you next month.

Clear, but I will be monitoring.



73 KC3BXC



It's Your Dime

It's Your Dime.

Remember back when you could communicate by “Pay Phone” for ten cents? This page is for anyone who wants to communicate with the BVARA community and beyond. Please send me your article that you would like posted on this page. Please, only topics and language in good taste. As the editor I reserve the option to post it or ignore it. Send your dime to me at: kc3bxc.73@gmail.com



The following suggested process for showing where you have made contacts for a particular event or ham band or mode is from Rich, K3SOM for the recent *Skywarn Recognition Day* back in early December.

Generate a Map of Who You Contacted

A map of who and where you made contacts can be very useful and informative. Here in Western PA, amateur clubs were specifically encouraged by local ARRL and ARES representatives to volunteer to operate on Skywarn Recognition Day by substituting for the NWS personnel because of the Federal Covid restrictions. The Beaver Valley ARA (BVARA) stepped up to the request and volunteered time, equipment, and people to support this recognition event.

It's Your Dime

We operated two stations on 20, 40, and 80 meters with three different antennas for two hours. The bands cooperated and noise levels were low resulting in very positive results. A total of 86 SSB contacts were made that covered 33 states and 2 Canadian provinces. But with three antennas, where were these contacts and what was the coverage by band? To easily answer those questions, an interactive map with markers showing each contact would be invaluable, particularly if we had to enter the data only once when the contact was logged.

The free **N1MM** Contest Logging Program was set up on two PCs to record each contact. After the event, two ADI files were exported for further documentation and analysis. One use was to document our contacts to the NWS so that they could issue participation certificates. Another use was to enable us to better understand propagation and how our antennas performed.

We decided to import both files into the **ACLog** tool that is available from N3FJP. ACLog can provide a multitude of functions that offer high value to many hams. In this case, we could automatically review how many states, countries, grids, and much more by clicking a few buttons. The two ADI files were automatically entered and merged, then finally exported as a combined ADI file with all contacts. That would satisfy the post-event needs of the NWS, but we wanted more!

Examination of the data revealed that we were missing longitude and latitude data or a received Grid Square location. But during our time slot, the contacts were coming fast and furious, so the best we could do at the time was to get their city and state/province. That additional information would be needed for our third utility program.

We could take the combined logs that we had imported into ACLog from the two station PCs running N1MM and then generate a Google map of North America with markers from the location of each contact. David Levine, K2DSL had already developed an **ADIF to Map** free utility that only requires the ADI file of contacts to create the annotated Google Map. But the tool requires either the longitude/latitude for each contact or the received Grid Square within the ADI file.

see: <https://www.levinecentral.com/adif2map/>

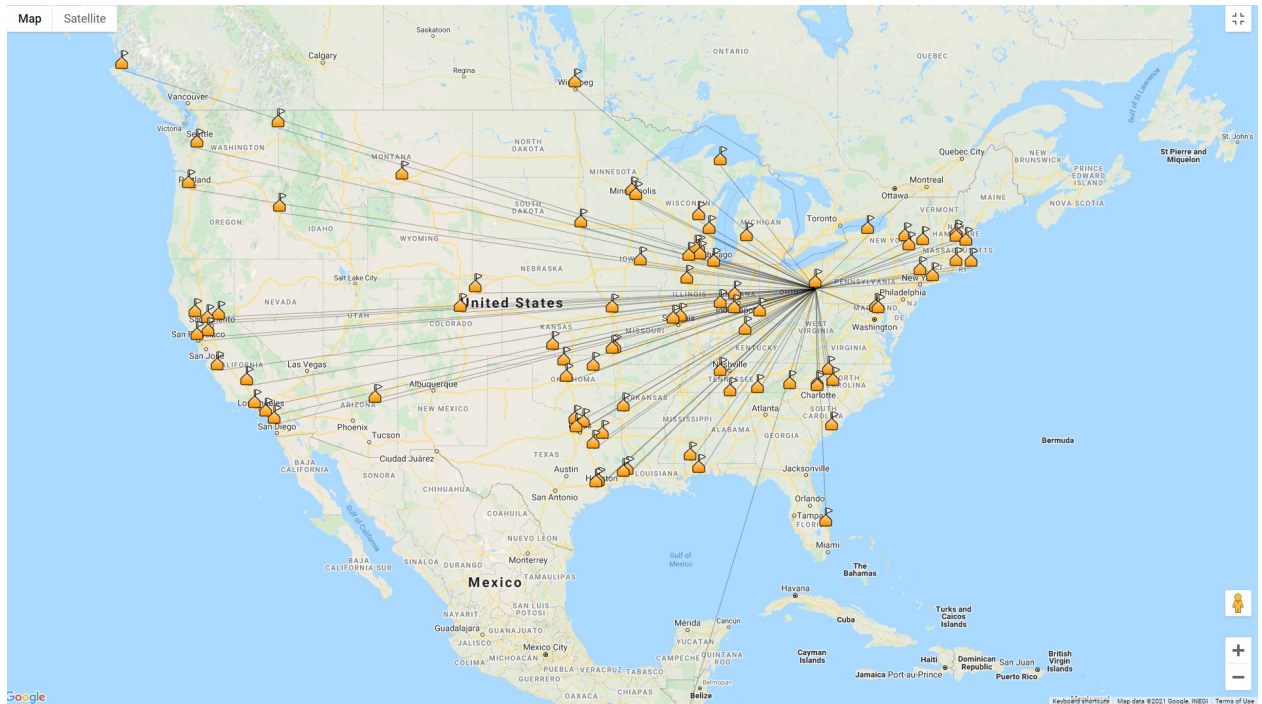
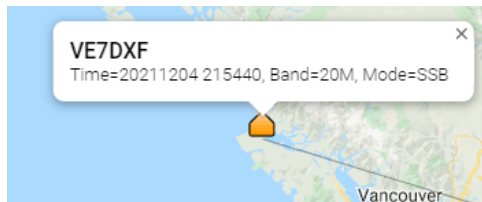
It seemed like a very easy process, as I already had ACLog, but specific location data was still required. I still needed the more accurate longitude/latitude or Grid Square.

ACLog to the rescue! Under the CallBook Tab, I needed to select the 'QRZ Internet Lookup' first. Then, under the EDIT tab, I could choose to fill in the missing fields by selecting the 'Fill Fields Determined by Call'. ACLog would then go out to QRZ.com and fill in the required fields for each contact that would be needed by the K2DSL program. Here, the Grid Square could work very well for us.

Finally, I could call up K2DSL's program and point it to where the ADI file was located on my PC. Then by clicking the 'Upload the Map' button, his program would quickly load in

It's Your Dime

and map each contact with a marker on the Google Map. By clicking on a marker, details of that contact can be displayed including Date, Time, Band, and Mode. I could select any contact on the map to review the data. Awesome!



As the Google map is re-sized, close-in contacts can easily be separated. The ADI file, using ACLog, can be easily adjusted to select just the contacts on one band or one geographic area. Give it a try!

Rich Soltesz, K3SOM

Of Interest to All

Hello BVARA Members,

It is always sad when a BVARA club member passes on. Herb Lawrence, KT3HC passed away peacefully on Thursday, December 16th, 2021. Herb initially obtained his Technician Class license in 2007 and subsequent General and Extra Class status. He actively participated as a Volunteer Examiner for our club for many years thus enabling many people to take their exams to either become a ham or else to upgrade their license class.

Herb's personality reflected the kindness in his heart and his willingness to be a part of our club activities. On the next page are excerpts from the death notice from the *Huntsman Funeral Home* of Rochester, PA. Our deepest sympathy goes out to his surviving family members and to all of his close friends. May he rest in peace.

73

Dit-Dit-Dit Dah-Dit-Dah (SK)



Of Interest to All

HERBERT E. LAWRENCE JR. (SK)

12/8/1937 — 12/16/2021

Herbert E. Lawrence Jr., 84, of Chippewa Twp., passed away on Thursday, December 16, 2021 in Good Samaritan Hospice at Heritage Valley Beaver. He was born in Rochester on December 8, 1937 the son of the late Herbert E. Lawrence Sr. and Helen Ralston. He worked as an Industrial Electrician, retiring as a Maintenance Supervisor with Rome Metals.

Herb was a Ham Radio Operator with the call sign of KT3HC and a long-time member of the Beaver Valley Amateur Radio Association (BVARA) where he was a Volunteer Examiner. He initially obtained his Technician Class license in 2007 and subsequent General and Extra Class status. He was a private pilot earning his license in 1962. He also enjoyed maintaining his property.

Herb was a member of Faith Community United Methodist Church in Rochester. He is survived by a son: Douglas Lawrence, K3GTX, and his fiancée Kathy Rea; a son: Michael Lawrence; a granddaughter Chelsea N. Lawrence; a great granddaughter Heartley R. Wiler; and a sister: Helen Siget.

Because of the increased cases of Covid-19, all services are private. Interment will take place in Sylvania Hills Memorial Park, Rochester.

The family wishes to give a special thank you to Kathy and the rest of the staff at Good Samaritan Hospice for keeping Dad comfortable during his last days.

Memorial contributions may be made to Animal Friends. 562 Camp Horne Rd. Pittsburgh, PA 15237.

Of Interest to All

Club Photos Added to Yahoo's Flickr website for the Christmas Party and Darlington Days Events

Hello BVARA Club Members,

Two new albums of club photos have been added to our collection on Flickr.com including photos from the Christmas Dinner as well as from our club activities at Darlington Days. On this web site, BVARA photos going back to 2009 have been gathered and organized into Albums by Year and by Event. The photos can be viewed at:

<https://www.flickr.com/photos/w3sgj/>

Near the top left of the page, areas can be selected:

All of our photos are contained in the Photostream, but a better way to look at a particular year and event is to click on the Albums label. When the Albums tab is displayed, you can select which Year and Event that you wish to view. By clicking on an Album of your choice, you can quickly see all of the photos that have been posted to this Album collection, courtesy of the contributions of club members. Here are some of the more recent ones:

The entire W3SGJ collection of photos on Flickr provides you with the ability to download any favorite photo that you wish to personally save. Further, if you wish, you can click on this symbol in the top right part of the page to enlarge all the photos in an album.

If you wish, you can also press the 'F11' key on your keyboard. The task bar and the web browser header will then disappear and the photo will occupy your entire screen. To go back, click the 'F11' key again to restore the task bar and the web browser header. Then you may wish to also click on this symbol in the top right part of the page to restore the photos to their original size.

It's easier to do than it is to describe it!
Best regards, and enjoy the club photos,
Rich - K3SOM



Of Interest to All

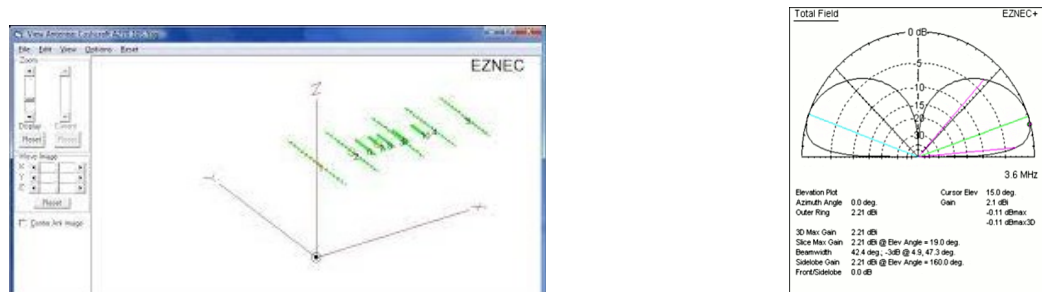
EZNEC Antenna Model Software is now in the Public Domain

As announced in our September eQRM Newsletter, Roy Lewallen, W7EL has announced his retirement. He has decided to release his software into the Public Domain for all to download and use. As a result of his total retirement and personal choice, no further development or support will be available from him.

With the new year upon us, if you have always wanted to model your favorite antenna or want to know how it would compare with another antenna, this is the time to expand your comfort zone for free and resolve to learn a little more about your favorite hobby. If there is sufficient interest, a *Beginner's Guide to EZNEC* could be developed and offered to club members. This could be a hands-on format to facilitate better learning and understanding by you of this powerful tool.

Here is the Web Link: <https://eznec.com/>

Whether you enjoy HF, VHF, UHF, or LW, Roy has thrown the perfect pass in your direction. Will you reach out, catch it, and really score big at no cost?



EZNEC Antenna Software by W7EL

EZNEC IS NO LONGER FOR SALE. IT IS FREE (see below)

EZNEC PRO/4 IS NO LONGER AVAILABLE (see below)

THERE WILL BE NO SUPPORT OR REFUNDS

The introduction of EZNEC Pro/2+ v. 7.0 has been unavoidably delayed. The estimated time of introduction is Jan. 14, 2022, but I'll do my very best to have it ready before then. It is now undergoing extensive testing and updating of the manual.

EZNEC Pro/2+ v. 7.0 will have all the features of EZNEC Pro/2 v. 6.0, plus extra features including wire loss for individual wires and the ability to run external NEC-4.2 and NEC-5 programs for calculation.

Until EZNEC Pro/2+ v. 7.0 is available, you can download EZNEC Pro/2 v. 6.0 by clicking here:

[Download EZNEC Pro/2 v. 6.0](#)

Radio Sport

Bruce Draper, AA5B, aa5b.corral@gmail.com

Contest Corral

January 2022

Check for updates and a downloadable PDF version online at www.arrl.org/contest-calendar.

Refer to the contest websites for full rules, scoring information, operating periods or time limits, and log submission information.

Start Date-Time	Finish Date-Time	Bands	Contest Name	Mode	Exchange	Sponsor's Website
1 0000	1 0100	3.5	AGB New Year Snowball Contest	CW Ph Dig	Category, ARRL section	www.qsl.net/eu1eu/agnb_nysb.htm
1 0800	1 1100	3.5, 7	SARTG New Year RTTY Contest	Dig	RST, serial, name, "HNY" greeting	rttyops.com/index.php/contests
1 0900	1 1200	3.5-14	AGCW Happy New Year Contest	CW	RST, serial, mbr (if any)	alt.agcw.de/index.php/en
1 1200	2 1200	1.8-28	VW PMC Contest	CW Ph	RS(T), PMC abbreviation or CQ zone	s59dcd.si/index.php/sl/vw-pmc
1 1400	1 1800	144, 432	AGCW VHF/UHF Contest	CW	RST, serial, power class, 6-char grid	www.agcw.de/contest/vhf-uhf
1 1500	1 1800	3.5-28	QRP ARCI New Years Sprint	CW	RST, SPC, mbr or power	qrparci.org
1 1500	2 1500	3.5-14	Original QRP Contest	CW Ph	RST, serial, power category	qrcc.de/contestrules/oqrp.html
1 1800	1 2359	3.5, 7, 14, 18, 21, 24, 28, 2 repeaters	ARRL Kids Day	Ph	Name, age, QTH, favorite color	www.arrl.org/kids-day
3 0000	3 0100	1.8-28	K1USN Slow Speed Test	CW	Max 20 WPM; name, SPC	www.k1usn.com/sst.html
4 0100	4 0159	1.8-50	Worldwide Sideband Contest	Ph	RS, OM, YL, or Youth	wsac.com/rules.html
4 0200	4 0400	3.5-28	ARS Spartan Sprint	CW	RST, SPC, power	arsqr.blogspot.com
4 1700	4 1900	3.5-14	RTTYops Weekspint	Dig	Other's call, your call, serial, name	rttyops.com
5 0200	5 0330	7	QRP Fox Hunt	CW	RST, SPC, name, power	www.qrpfoxhunt.org
5 1300	5 1400	1.8-28	CWops Mini-CWT Test	CW	Name, mbr or SPC	cwops.org/cwops-tests
5 1700	5 2000	144	VHF-UHF FT8 Activity Contest	Dig	4-char grid square	ft8activity.eu/index.php/en
5 1900	5 2000	1.8-28	CWops Mini-CWT Test	CW	Name, mbr or SPC	cwops.org/cwops-tests
5 2000	5 2100	3.5	UKEICC 80-Meter Contest	Ph	6-char grid square	ukeicc.com/80m-rules.php
6 0000	7 0300	7	Walk for the Bacon QRP Contest	CW	<13 WPM; RST, SPC, name, mbr or power	qrptest.com/pigwalk40
6 0300	6 0400	1.8-28	CWops Mini-CWT Test	CW	Name, mbr or SPC	cwops.org/cwops-tests
6 0700	6 0800	1.8-28	CWops Mini-CWT Test	CW	Name, mbr or SPC	cwops.org/cwops-tests
6 1700	6 1900	3.5-14	RTTYops Weekspint	Dig	Other's call, your call, serial, name	rttyops.com
6 1800	6 2200	28	NRAU 10-Meter Activity Contest	CW Ph Dig	RS(T), 6-char grid square	nrmcontest.no
6 2000	6 2200	1.8-50	SKCC Sprint Europe	CW	RST, SPC, name, mbr or "none"	www.skccgroup.com
7 0100	7 0230	3.5	QRP Fox Hunt	CW	RST, SPC, name, power	www.qrpfoxhunt.org
7 2000	7 2100	1.8-28	K1USN Slow Speed Test	CW	Max 20 WPM; name, SPC	www.k1usn.com/sst.html
8 0000	8 2359	3.5-28	PODXS 070 Club PSKFest	Dig	RST, SPC	www.podxs070.com
8 0000	8 2359	3.5-28	YB DX Contest	Ph	RS, serial	ybdxcontest.com
8 0500	8 0900	3.5-28	Old New Year Contest	CW Ph	RST, sum of age and years on the air	www.radio.ru/cq
8 1200	9 2359	1.8-50	SKCC Weekend Sprintathon	CW	RST, SPC, name, mbr or "none"	www.skccgroup.com
8 1300	8 1700	3.5, 7	RSGB AFS Contest, CW	CW	RST, serial	www.rsgbcc.org/hf
8 1800	9 2359	3.5-28	ARRL RTTY Roundup	Dig	WVE: RST, SP; non-WVE: RST, serial	www.arrl.org/rtty-roundup
8 2000	9 0700	1.8	EUCW 160-Meter Contest	CW	RST, name, mbr or "NM"	www.eucw.org/eu160.html
9 0630	9 0830	3.5, 7	NRAU-Baltic Contest, SSB	Ph	RS, serial, fylke/län/province/region	nraubaltic.eu
9 0900	9 1059	28	DARC 10-Meter Contest	CW Ph	RS(T), serial, DOK (if any)	darc.de/der-club/referate/conteste
9 0900	9 1100	3.5, 7	NRAU-Baltic Contest, CW	CW	RST, serial, fylke/län/province/region	nraubaltic.eu
10 0100	10 0300	1.8-28	4 States QRP Second Sunday Sprint	CW Ph	RS(T), SPC, mbr or power	4sqrp.com/SSS/sss_rules.pdf
12 1700	12 2000	432	VHF-UHF FT8 Activity Contest	Dig	4-char grid square	ft8activity.eu/index.php/en
15 0000	16 2359	3.5-28	Malaysia DX Contest	Ph	RS, age	9mdxc.com
15 1200	16 1159	1.8-28	Hungarian DX Contest	CW Ph	RS(T), HA county or serial	ha-dx.com/en/contest-rules
15 1200	16 1159	3.5-28	PRO Digi Contest	Dig	RST, serial, "M" if a member	www.procontestclub.ro
15 1200	16 1200	3.5-28	UBA PSK63 Prefix Contest	Dig	RSQ, UBA section or serial	uba.be/en/hf/contest-rules
15 1800	16 0559	1.8-28	North American QSO Party, CW	CW	Name, SPC	www.ncjweb.com
15 1900	15 2300	1.8	WAB 1.8 MHz Phone	CW Ph	RS, serial, WAB square or country	wab.internip.net
15 1900	17 0359	50 and up	ARRL January VHF Contest	CW Ph Dig	4-char grid square	www.arrl.org/january-vhf
15 2000	16 0559	1.8-7	Feld Hell Sprint	Dig	RST, mbr, SPC, grid	sites.google.com/site/feldhellclub
16 1300	16 1700	3.5, 7	RSGB AFS Contest, Data	Dig	RST, serial	www.rsgbcc.org/hf
16 2300	17 0100	1.8-28	Run for the Bacon QRP Contest	CW	RST, SPC, mbr or power	qrptest.com/pigrun
20 0000	21 0300	14	Walk for the Bacon QRP Contest	CW	<13 WPM; RST, SPC, name, mbr or power	qrptest.com/pigwalk20
20 0130	20 0330	3.5-14	NAQCC CW Sprint	CW	RST, SPC, mbr or power	naqcc.info
22 1200	23 1200	3.5-28	BARTG RTTY Sprint	Dig	Serial	bartg.org.uk
22 1300	22 1700	3.5, 7	RSGB AFS Contest, SSB	Ph	RS, serial	www.rsgbcc.org/hf
22 1800	23 0559	1.8-28	North American QSO Party, SSB	Ph	Name, SPC	www.ncjweb.com
22 1800	23 0559	1.8-28	NA Collegiate Championship, SSB	Ph	Name, SPC	www.w9smc.com/nacc
23 1400	26 0800	1.8-144	Classic Exchange, Phone	Ph	Name, RS, SPC, rig manu/model	www.classicexchange.org
26 0000	26 0200	1.8-50	SKCC Sprint	CW	RST, SPC, name, mbr or "none"	www.skccgroup.com
26 2000	26 2100	3.5	UKEICC 80-Meter Contest	CW	6-char grid square	ukeicc.com/80m-rules.php
26 2300	30 2300	1.8-7	AWA Linc Cundall CW Memorial	CW	RST, eqpt year, input power	antiquewireless.org
27 0130	27 0330	1.8	NAQCC CW Sprint	CW	RST, SPC, mbr or power	naqcc.info
28 2200	30 2200	1.8	CQ 160-Meter Contest, CW	CW	RST, SP or CQ zone	www.cq160.com
29 0600	30 1800	3.5-28	REF Contest, CW	CW	RST, French department or serial	concours-r-e-f.org/reglements
29 1300	30 1300	3.5-28	UBA DX Contest, SSB	Ph	RST, serial, province (if ON)	uba.be/en/hf/contest-rules
29 1900	30 1900	All	Winter Field Day	CW Ph Dig	Category, ARRL section	winterfieldday.com

There are a number of weekly contests not included in the table above. For more info, visit: www.qrpfoxhunt.org, www.ncccsprint.com, and www.cwops.org. All dates refer to UTC and may be different from calendar dates in North America. Contests are not conducted on the 60-, 30-, 17-, or 12-meter bands. Mbr = Membership number. Serial = Sequential number of the contact. SPC = State, Province, DXCC Entity. XE = Mexican state. Listings in blue indicate contests sponsored by ARRL or NCJ. The latest time to make a valid contest QSO is the minute listed in the "Finish Time" column. Data for Contest Corral is maintained on the WA7BNM Contest Calendar at www.contestcalendar.com and is extracted for publication in QST 2 months prior to the month of the contest. ARRL gratefully acknowledges the support of Bruce Horn, WA7BNM, in providing this service.