

# THE eQRM

JANUARY 2023



## The BVARA in Beaver County Pennsylvania

Beaver Valley Amateur Radio Association

W3SGJ

2M Repeater

145.310

PL 131.8



**On the Cover:** All of us at the BVARA wish you a very Happy New Year!

## Inside this edition

Who We Are	3	Hamfests & General Announcements	9
This Month	4	It's Your Dime	10
Get a License or Upgrade	6	Of Interest to All	11
New License and Upgrades	7	Bits and Pieces	13
Membership	8	Radio Sport	14



### Check into our nets

**Wednesday 2 Meter**

**8:30PM on 145.310 MHz PL 131.8**

**Wednesday 10 Meter**

**9:00PM on 28.470 MHz**

The eQRM is a publication of the Beaver Valley Amateur Radio Association (BVARA) and is Copyright 2010 - 2023. All material presented in this publication is not necessarily the views of the American Radio Relay League (ARRL), BVARA, or members of the said organizations. If you would like to contact the editor of the eQRM, please email David at [kc3bxc.73@gmail.com](mailto:kc3bxc.73@gmail.com). Please visit us online at [www.W3SGJ.org](http://www.W3SGJ.org). To subscribe to our newsletter, please visit [W3SGJ.org/newsletter.php](http://W3SGJ.org/newsletter.php)

# Who We Are

## 2022 BVARA OFFICERS

President: Jack Spencer, KZ3Z

Vice President: Dan Grazulis, KB3VSP

2nd Vice Pres.: Doug Lawrence, K3GTX

Treasurer: Pam Spencer, W3PMS

Secretary: Norm Trunick, K3NJT

Director: Tony Pavilonis, K3AHP

Director: Jim Allen, KC3IXE

Trustee: Doug Hanna, N4YKQ

## MONTHLY MEETINGS

E-Board meetings are now held the Saturday before the monthly club meeting.

VE testing begins at 5:00 PM.

Regular meetings are at 6:30 PM

All meetings are held at the  
Beaver County Emergency Services  
Center (A.K.A. THE 911 Center )  
351 14th Street  
Ambridge, PA 15003  
on the second Thursday of every month  
(unless otherwise stated).

2023

Jan 12

Feb 09

Mar 09

Apr 13

May 11

Jun 08

Jul 13

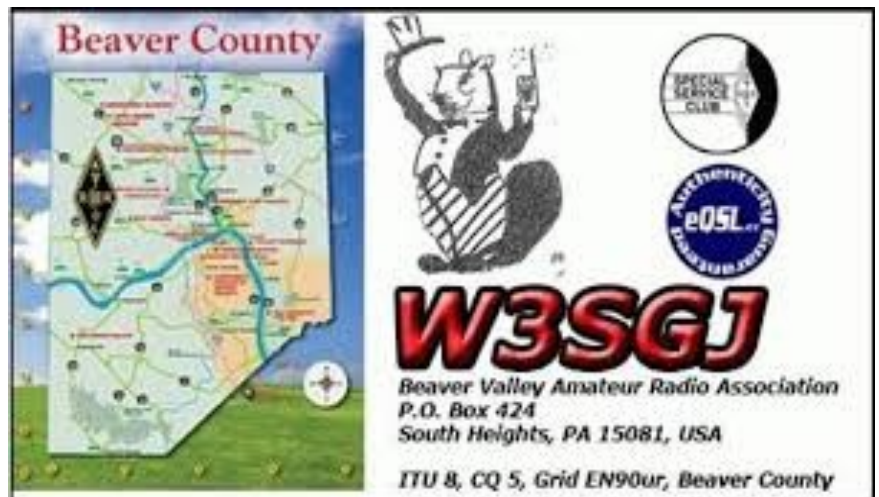
Aug Corn Roast

Sep 14

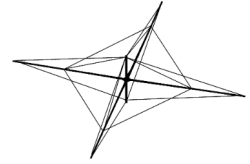
Oct 12

Nov 09

Dec Christmas Party



# This Month



## *This Month:*

### *Speakers:*

Rich Soltesz, K3SOM

### *Topic:*

A New Purchase for the BVARA

### *Including:*

Continuing with our BVARA Presentation Series this year, our topic this month highlights a recently made decision by the Executive Board to purchase a new antenna for the club. As propagation conditions continue to improve on 10, 15, and 20 meters, club members get real enjoyment out of making contacts on these bands. But the competition has become more noticeable and difficult to overcome as antenna technology has allowed the competition to utilize directional antennas with significant advantage over a dipole or a simple vertical antenna. We really noticed the improvement of a beam antenna during the PA QSO Party after we had worked all 67 counties and decided to 'fill up the log' with more challenging contacts outside Pennsylvania. 10, 15, and 20 meters were wide open to Europe and Africa during the daylight hours. After hooking up a Yagi to a Triplexer with stations on 10 and 15 meters connected, the immediate reaction that we had was: "Wow!"

In the weeks following, members put together a set of goals that we wanted to achieve. A set of criteria were then developed to assist us in meeting those goals. Words like 'performance', 'low cost', 'portability', 'ease of deployment', 'light weight', and 'durability' came to the forefront. We now knew what we needed and so we began our search for an antenna that would fulfill our specific 'must haves' and most of our 'nice to haves' requirements.

Success! We'll bring you up to speed on our purchase and the next steps in our process. We'll reveal performance numbers, field test comparisons, and customer testimonials. In addition, the antenna has a high rating with DXpeditions as well as the availability of replacement parts, if required.

Looking to club events this year and the years ahead as we climb to the top of Solar Cycle 25, this is one presentation that you won't want to miss!

### *Rich's Background:*

Extra Class Ham, Licensed since 1962, VE,  
B.S. Electrical Engineering,



# More this Month

## Weekly

The Freedom Square Diner in Monaca has a great wait staff. Come let them take your order.

Thursday Morning Breakfast  
(or you can have lunch)

**Come join us!**



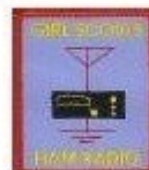
The BVARA meets every Thursday at the Freedom Square Diner in Center Township, just to the right of the Cinemark Center Township Marketplace at 09:30 AM. All radio amateurs and those interested in amateur radio are encouraged to come join us at our Thursday morning breakfast.

**See you  
Thursday at**



**RACES / ARES**

The eQRM Urges All County Hams to Participate.



# Get your License or Upgrade

If you are interested in getting your first FCC license or upgrading your current amateur radio license, the Beaver Valley Amateur Radio Association holds VE Test sessions (Volunteer Examinations) the second Thursday of each month at the Beaver County Emergency Services Center in Ambridge Pennsylvania prior to our BVARA Club meeting. If there is no meeting there is no test session. Please come take your test with us!

For more information, contact :  
Rich Soltesz, K3SOM  
(724) 847-0610  
k3som@arrl.net



## VE TEST SESSIONS

Beaver County Emergency Services Center 351 14th Street Ambridge, PA 15003.  
Tests begin promptly at 5 pm on the same day as BVARA Club Meetings  
(the second Thursday of the month).  
All classes of amateur radio license tests are administered.



ALL candidates MUST bring ALL of the following:

1. 2 forms of I.D. - one MUST be a photo I.D.
2. A pencil AND a pen with blue or black ink.
3. The original AND a photocopy of any valid ham license.
4. The original AND a photocopy of any C.S.C.E.
5. The test fee of \$15 - cash only.
6. Your FRN Number. (free from the FCC, call for details)

# New License and Upgrades

BVARA VE Testing

## Testing this Month : December 2022 VE Test Session Results



Our testing was not held, we were all at the BVARA Christmas Party.

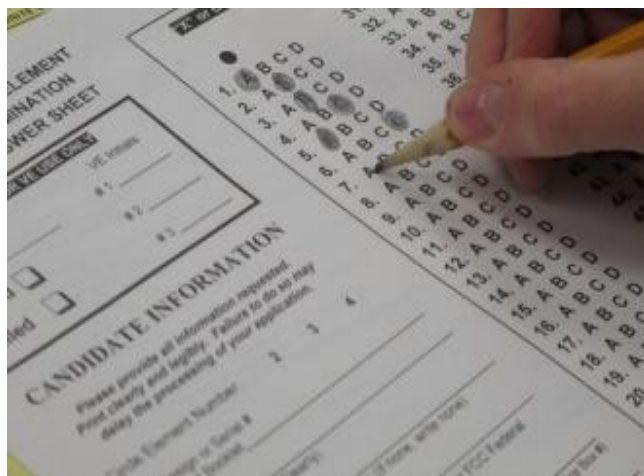
Our next VE Test Session will be on January 12<sup>th</sup>, 2023.

A special thank you goes out to these Extra-Class VE Team members.

Thank you for your faithful support.

Job well done!

Reg Genola – W3REG,  
Tony Pavilonis – K3AHP,  
Mick Pyzoha – N3OJP,  
Bart Stack – KB3NFM, and  
Bob Winkle – N3AZZ  
Frank Witkowski - W3FJW  
Rich Soltesz - K3SOM, VE Liaison



# Membership Information

By becoming a BVARA member you help secure the future of Amateur Radio in Beaver County. Additionally, the BVARA receives a portion of each ARRL membership you purchase!

## Join the BVARA and ARRL

Sign up for:	Price	
<input type="radio"/> BVARA full membership	25.00	_____
<input type="radio"/> BVARA student membership	15.00	_____
<input type="radio"/> BVARA associate membership	10.00	_____
<input type="radio"/> BVARA Child under 21 at home membership	5.00	_____
One year ARRL membership	49.00	_____
A Club Donation		_____
ARRL Member?      Yes      No	Total      Enclosed	_____

Your License Class (If you have one.)

<input type="radio"/> Technician	Name _____
<input type="radio"/> General	Address _____
<input type="radio"/> Advanced	_____
<input type="radio"/> Extra Class	Email _____
	Phone _____
	Your Call sign _____
	Your Signature _____

Make check or money order payable to:

The Beaver Valley Amateur Radio Association, P.O. Box 424  
South Heights, Pa 15081



# Hamfests & General Announcements

Come with me, I am  
looking forward to the

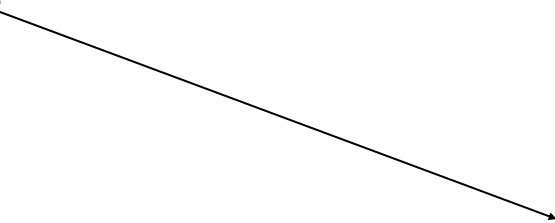


**Washfest**  
February 26th, 2023!



# It's Your Dime

Remember back when you could communicate by “Pay Phone” for ten cents? This page is for anyone who wants to communicate with the BVARA community and beyond. Please send me your article that you would like posted on this page. Please, only topics and language in good taste. As the editor I reserve the option to post it or ignore it. Send your dime to me at: [kc3bxc.73@gmail.com](mailto:kc3bxc.73@gmail.com)



# Of Interest to All

## Beaver Valley ARA

### 100<sup>th</sup> Anniversary Polo Shirt/Windbreaker Order Form

Orders will be accepted until February 1, 2023. Mail order form/payment ASAP.

Make check payable to BVARA. Mail order form and payment to:

Doug Lawrence K3GTX, 142 Ridge Avenue, Beaver Falls, PA 15010

Name: \_\_\_\_\_ Phone #: \_\_\_\_\_

Street Address: \_\_\_\_\_

City: \_\_\_\_\_ State: \_\_\_\_\_ Zip Code: \_\_\_\_\_

**Polo Shirt** (royal blue polyester/cotton blend Port Authority brand pique polo with club logo on left chest and call sign/name on right chest)

S \$31 \_\_\_\_\_ M \$31 \_\_\_\_\_ L \$31 \_\_\_\_\_ XL \$31 \_\_\_\_\_ XXL \$33 \_\_\_\_\_ XXXL \$35 \_\_\_\_\_

**Windbreaker – No Hood** (navy blue Sport Tek brand with club logo on left chest and call sign/name on right chest)

S \$41 \_\_\_\_\_ M \$41 \_\_\_\_\_ L \$41 \_\_\_\_\_ XL \$41 \_\_\_\_\_ XXL \$43 \_\_\_\_\_ XXXL \$45 \_\_\_\_\_

**Windbreaker – Hooded** (navy blue Sport Tek brand with club logo on left chest and call sign/name on right chest)

S \$43 \_\_\_\_\_ M \$43 \_\_\_\_\_ L \$43 \_\_\_\_\_ XL \$43 \_\_\_\_\_ XXL \$45 \_\_\_\_\_ XXXL \$47 \_\_\_\_\_

Call sign on clothing: \_\_\_\_\_

Total \$ enclosed: \_\_\_\_\_

Name on clothing: \_\_\_\_\_

Call or text Doug Lawrence @ (412) 302-6084 or email [k3gtx@yahoo.com](mailto:k3gtx@yahoo.com) with any questions.

# Of Interest to All

## BVARA Coming Attractions



### January

#### Winter Field Day

When : January 28 – January 29

Where : To be Determined by Weather (Bradys Run or K3SOM or ??)

Info Including Rules : [www.winterfieldday.com](http://www.winterfieldday.com)

### February

#### Presentation

Who : Fred McMullan, NOAA Pittsburgh Weather Service Office

Topics : Role of Hams and Skywarn, The 'Beaver County Weather Split' Anomaly

When : February 9<sup>th</sup> BVARA Club Meeting, 7:00 PM

### March

#### POTA Activations

Moraine, Raccoon Creek, and Beaver Creek, OH

North Country Trail and State Game Lands

### April

#### BVARA 100<sup>th</sup> Anniversary Special Event Station and Celebration

W3S for the week of April 15 through April 22, 2023

Operate from the Brady's Run ball fields on April 15 and 16 to open the week

On April 22, Rich, K3SOM, has invited us to operate from his home to close the week

Signup schedule for club members to operate during the week from their homes

### June

#### Summer ARRL Field Day Activations





# Bits and Pieces

Oh my goodness,

It's a new year! I am so glad 2022 is behind us all. The world pandemic cruelly impacted our plans and so many activities.

I am looking forward to so many things I missed last year. I have a powerful new desire to enjoy life to the fullest because I have examined things in my 2022 life from a much different perspective. I have a renewed child-like curiosity for the things that lie ahead! I encourage you to examine your perspective too. What are some of your plans for this year?



I want to share my enthusiasm with you and get you reaching for your full potential! Our radio hobby is just one of the things that excites me in my travels of unexplored routes this new year.

I want to make some great radio hobby memories this year. (antenna parties, field days, Thursday breakfasts, hamfests, meeting new hams, new radio contacts, good radio discussions, new radio equipment, radio challenges, just some good fun, stretching my talents & knowledge and the list goes on... ) I hope to have you as part of some of these memories.

I have a grateful heart. I am reaching for the gold ring! I trust you will have a wonderful time living and enjoying your radio new year too.

Clear on your final, but I will be monitoring.



73 KC3BXC



# Radio Sport

## Contest Corral

January 2023

Check for updates and a downloadable PDF version online at [www.arrl.org/contest-calendar](http://www.arrl.org/contest-calendar).

Refer to the contest websites for full rules, scoring information, operating periods or time limits, and log submission information.

Start - Finish		Date-Time		Bands	Contest Name	Mode	Exchange	Sponsor's Website
1	0000	1	0100	3.5	AGB New Year Snowball Contest	CW Ph Dig	RST, serial, mbr (if any)	<a href="http://www.qsl.net/eu1eu/agnb_nysb.htm">www.qsl.net/eu1eu/agnb_nysb.htm</a>
1	0800	1	1100	3.5, 7	SARTG New Year RTTY Contest	Dig	RST, serial, name, "HNY" greeting	<a href="http://www.sartg.com/contest/nryrules.htm">www.sartg.com/contest/nryrules.htm</a>
1	0900	1	1200	3.5-14	AGCW Happy New Year Contest	CW	RST, serial, mbr (if any)	<a href="http://www.agcw.de/contest/hnyc/hnyc-engl">www.agcw.de/contest/hnyc/hnyc-engl</a>
1	1400	1	1800	144, 432	AGCW VHF/UHF Contest	CW	RST, serial, power class, 6-char grid	<a href="http://www.agcw.de/contest/vhf-uhf">www.agcw.de/contest/vhf-uhf</a>
2	0000	2	0100	1.8-28	K1USN Slow Speed Test	CW	Max 20 WPM; name, SPC	<a href="http://www.k1usn.com/sst.html">www.k1usn.com/sst.html</a>
3	0100	3	0159	1.8-28, 50	Worldwide Sideband Activity Contest	Ph	RS, age group (OM, YL, Youth YL or Youth)	<a href="http://wvsac.com/rules.html">wvsac.com/rules.html</a>
3	0200	3	0400	3.5-28	ARS Spartan Sprint	CW	RST, SPC, power	<a href="http://arsqr.blogspot.com">arsqr.blogspot.com</a>
4	0200	4	0330	7	QRP Fox Hunt	CW	RST, SPC, name, power	<a href="http://www.qrpfoxhunt.org">www.qrpfoxhunt.org</a>
4	1300	4	1400	1.8-28	CWops Test (CWT)	CW	Name, mbr or SPC	<a href="http://cwops.org/cwops-tests">cwops.org/cwops-tests</a>
4	1700	4	2100	144	VHF-UHF FT8 Activity Contest	Dig	4-char grid square	<a href="http://www.ft8activity.eu/index.php/en">www.ft8activity.eu/index.php/en</a>
4	1900	4	2000	1.8-28	CWops Test (CWT)	CW	Name, mbr or SPC	<a href="http://cwops.org/cwops-tests">cwops.org/cwops-tests</a>
4	2000	4	2100	3.5	UKEICC 80-Meter Contest	Ph	6-char grid square	<a href="http://www.ukelcc.com/80m-rules.php">www.ukelcc.com/80m-rules.php</a>
5	0000	6	0300	7	Walk for the Bacon QRP Contest	CW	Max 13 WPM; RST, SPC, name, mbr or power	<a href="http://qrptest.com/pigwalk40">qrptest.com/pigwalk40</a>
5	1800	5	2200	28	NRAU 10-Meter Activity Contest	CW Ph Dig	RS(T), 6-char grid square	<a href="http://nrriccontest.no">nrriccontest.no</a>
5	2000	5	2200	1.8-28, 50	SKCC Sprint Europe	CW	RST, SPC, name, mbr or "none"	<a href="http://www.skccgroup.com">www.skccgroup.com</a>
6	0200	6	0330	3.5	QRP Fox Hunt	CW	RST, SPC, name, power	<a href="http://www.qrpfoxhunt.org">www.qrpfoxhunt.org</a>
6	2000	6	2100	1.8-28	K1USN Slow Speed Test	CW	Max 20 WPM, name, SPC	<a href="http://www.k1usn.com/sst.html">www.k1usn.com/sst.html</a>
7	0000	7	2359	3.5-28	PODXS 070 Club PSKFest	Dig	RST, SPC	<a href="http://www.podxs070.com">www.podxs070.com</a>
7	1200	8	1200	1.8-28	WW PMC Contest	CW Ph	RS(T), PMC abbrev or CQ zone	<a href="http://www.s59dcd.si/index.php/sl/ww-pmc">www.s59dcd.si/index.php/sl/ww-pmc</a>
7	1200	8	2359	1.8-28, 50	SKCC Weekend Sprintathon	CW	RST, SPC, name, mbr or "none"	<a href="http://www.skccgroup.com">www.skccgroup.com</a>
7	1300	7	1700	3.5, 7	RSGB AFS Contest, CW	CW	RST, serial	<a href="http://www.rsgbcc.org">www.rsgbcc.org</a>
7	1500	8	1500	3.5-14	Original QRP Contest	CW Ph	RST, serial, power category	<a href="http://www.qrpcc.de/contestrules/oqrpr.html">www.qrpcc.de/contestrules/oqrpr.html</a>
7	1800	7	2359	3.5-14, 18, 21, 24, 28, 2 repeaters	ARRL Kids Day	Ph	name, age, QTH, favorite color	<a href="http://www.arrl.org/kids-day">www.arrl.org/kids-day</a>
7	1800	8	2359	3.5-28	ARRL RTTY Roundup	Dig	W/VE: RST, SP, non-W/VE: RST, serial	<a href="http://www.arrl.org/rtty-roundup">www.arrl.org/rtty-roundup</a>
7	2000	8	0700	1.8	EUCW 160-Meter Contest	CW	RST, name, member or "NM"	<a href="http://www.eucw.org/eu160.html">www.eucw.org/eu160.html</a>
8	0630	8	0830	3.5, 7	NRAU-Baltic Contest, SSB	Ph	RST, serial, fylke/län/province/region	<a href="http://www.nraubaltic.eu">www.nraubaltic.eu</a>
8	0900	8	1059	28	DARC 10-Meter Contest	CW Ph	RS(T), serial, DOK (if any)	<a href="http://www.darc.de/der-club/referate/conteste">www.darc.de/der-club/referate/conteste</a>
8	0900	8	1100	3.5, 7	NRAU-Baltic Contest, CW	CW	RST, serial, fylke/län/province/region	<a href="http://www.nraubaltic.eu">www.nraubaltic.eu</a>
9	0100	9	0300	1.8-28	4 States QRP Group Second Sunday Sprint	CW Ph	RS(T), SPC, mbr or power	<a href="http://www.4sqr.com/SSS/sss_rules.pdf">www.4sqr.com/SSS/sss_rules.pdf</a>
11	1700	17	2100	432	VHF-UHF FT8 Activity Contest	FT8	4-char grid square	<a href="http://www.ft8activity.eu">www.ft8activity.eu</a>
14	0000	14	2359	3.5-28	YB DX Contest	Ph	RS, serial	<a href="http://ybdxcontest.com">ybdxcontest.com</a>
14	1200	15	1200	3.5-28	UBA PSK63 Prefix Contest	Dig	RSQ, UBA section or serial	<a href="http://www.uba.be/en/ht/contest-rules">www.uba.be/en/ht/contest-rules</a>
14	1800	15	0559	1.8-28	North American QSO Party, CW	CW	Name, SPC	<a href="http://www.ncjweb.com/NAQP-Rules.pdf">www.ncjweb.com/NAQP-Rules.pdf</a>
15	1300	15	1700	3.5, 7	RSGB AFS Contest, Data	Dig	RST, serial	<a href="http://www.rsgbcc.org">www.rsgbcc.org</a>
15	2300	16	0100	1.8-28	Run for the Bacon QRP Contest	CW	RST, SPC, mbr or power	<a href="http://qrptest.com/pigrun">qrptest.com/pigrun</a>
18	1700	18	2100	1.2G	VHF-UHF FT8 Activity Contest	Dig	4-char grid square	<a href="http://www.ft8activity.eu/index.php/en">www.ft8activity.eu/index.php/en</a>
19	0000	20	0300	14	Walk for the Bacon QRP Contest	CW	Max 13 WPM; RST, SPC, name, mbr or power	<a href="http://qrptest.com/pigwalk20">qrptest.com/pigwalk20</a>
19	0130	19	0330	3.5-14	NAQCC CW Sprint	CW	RST, SPC, mbr or power	<a href="http://naqcc.info">naqcc.info</a>
21	1200	22	1159	1.8-28	Hungarian DX Contest	CW Ph	RS(T), HA county or serial	<a href="http://ha-dx.com/en/contest-rules">ha-dx.com/en/contest-rules</a>
21	1200	22	1159	3.5-28	PRODIGI Contest	Dig	RST, serial, "M" if a mbr	<a href="http://www.procontestclub.ro">www.procontestclub.ro</a>
21	1300	21	1700	3.5, 7	RSGB AFS Contest, SSB	Ph	RS, serial	<a href="http://www.rsgbcc.org">www.rsgbcc.org</a>
21	1800	22	0559	1.8-28	North American QSO Party, SSB	Ph	Name, SPC	<a href="http://www.ncjweb.com/NAQP-Rules.pdf">www.ncjweb.com/NAQP-Rules.pdf</a>
21	1800	22	0559	1.8-28	NA Collegiate Championship, SSB	Ph	Name, SPC	<a href="http://www.w9smc.com/nacc">www.w9smc.com/nacc</a>
21	1900	23	0359	50 and up	ARRL January VHF Contest	CW Ph Dig	4-char grid square	<a href="http://www.arrl.org/january-vhf">www.arrl.org/january-vhf</a>
21	2000	22	0559	1.8-7	Feld Hell Sprint	Dig	(See rules)	<a href="http://sites.google.com/site/feldhellclub">sites.google.com/site/feldhellclub</a>
25	0000	25	0200	1.8-28, 50	SKCC Sprint	CW	RST, SPC, name, mbr or "none"	<a href="http://www.skccgroup.com">www.skccgroup.com</a>
25	2000	25	2100	3.5	UKEICC 80-Meter Contest	CW	6-char grid square	<a href="http://www.ukelcc.com/80m-rules.php">www.ukelcc.com/80m-rules.php</a>
25	2300	29	2300	1.8-7	AWA Linc Cundall Memorial CW Contest	CW	RST, eqpt year, input power	<a href="http://antiquewireless.org">antiquewireless.org</a>
26	0130	26	0330	1.8	NAQCC CW Sprint	CW	RST, SPC, mbr or power	<a href="http://naqcc.info">naqcc.info</a>
27	2200	29	2200	1.8	CQ 160-Meter Contest, CW	CW	RST, SP or CQ zone	<a href="http://www.cq160.com/rules.htm">www.cq160.com/rules.htm</a>
28	0600	29	1800	3.5-28	REF Contest, CW	CW	RST, French dept or serial	<a href="http://concoeurs-r-e-f.org/reglements">concoeurs-r-e-f.org/reglements</a>
28	1200	29	1200	3.5-28	BARTG RTTY Sprint	Dig	Serial	<a href="http://bartg.org.uk">bartg.org.uk</a>
28	1300	29	1300	3.5-28	UBA DX Contest, SSB	Ph	RST, serial, section (if ON)	<a href="http://www.uba.be/en/ht/contest-rules">www.uba.be/en/ht/contest-rules</a>
28	1900	29	1900	All	Winter Field Day	CW Ph Dig	Category, ARRL section or "DX"	<a href="http://www.winterfeldday.com">www.winterfeldday.com</a>