

THE eQRM

OCTOBER 2017



The BVARA in Beaver County Pennsylvania

Beaver Valley Amateur Radio Association

W3SGJ

Repeater 145.310 PL 131.8

On the cover:

Here is a beautiful photo of Ohioypyle in Pennsylvania. October is very colorful in Pa with the fall leaves.

Inside this edition

Who We Are	3	Radio Sport	11
This Month	4	Bits and Pieces	12
Propagation	6	Interview with a Ham	13
Get a License or Upgrade	7	It's Your Dime	14
New License and Upgrades	8	Interesting Links	15
Membership	9	For all Radio Operators	16
Hamfests & General Announcements	10		

Check into our nets

Wednesday 2 Meter

8:30PM on 145.310 MHz PL 131.8

Wednesday 10 Meter

9:00PM on 28.470 MHz

The eQRM is a publication of the Beaver Valley Amateur Radio Association (BVARA) and is Copyright 2010 - 2017. All material presented in this publication is not necessarily the views of the American Radio Relay League (ARRL), BVARA, or members of the said organizations. If you would like to contact the editor of the eQRM, please email David at kc3bxc.73@gmail.com. Please visit us online at www.W3SGJ.org. To subscribe to our newsletter, please visit W3SGJ.org/newsletter.php

Who We Are

2017 BVARA OFFICERS

President: Jack Spencer, KZ3Z

Vice President: Mark Kavic, KB3LED

2nd Vice Pres.: Rob Miller, N3OJL

Treasurer: Pam Spencer, W3PMS

Secretary: Norm Trunick, K3NJT

Director: Bob Winkle, N3AZZ

Director: Bob Croft, KB3RHN

Trustee: Rich Soltesz, K3SOM

MONTHLY MEETINGS

E-Board meetings are now held the Saturday before the monthly club meeting.

VE testing begins at 5:00 PM.

Regular meetings are at 6:30 PM

All meetings are held at the
Beaver County
Emergency Services Center
351 14th Street
Ambridge, PA 15003
on the second Thursday of every month
(unless otherwise stated).

2017 MEETING DATES

Oct 12

Nov 09

Dec 09 Christmas Party

Jan 11 2018

Feb 09

Mar 08

Apr 12

May 10

Jun 14

Jul 12

Aug 09



This Month

BVARA Club Feature Presentation *This Month:*

Speaker:

Rich Soltesz
K3SOM

Topic:

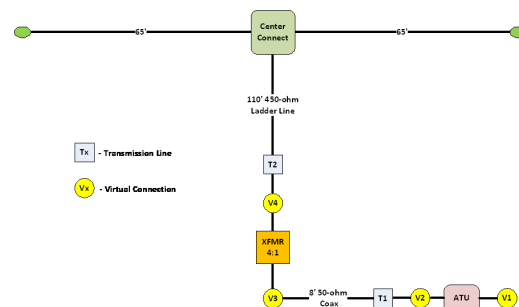
Dipole Antenna Ideas During a Declining Solar Cycle

Including:

Continuing with our BVARA Presentation Series this year, our topic this month deals with approaches for antennas during this period of declining propagation and difficult band conditions. Hams may find these suggestions very helpful in continuing to make radio contacts. As the 10, 12, and 15-meter bands continue to decline, we'll focus on antennas for 20 through 80 meters that are simple to construct and satisfy many constraints with which hams must frequently face.

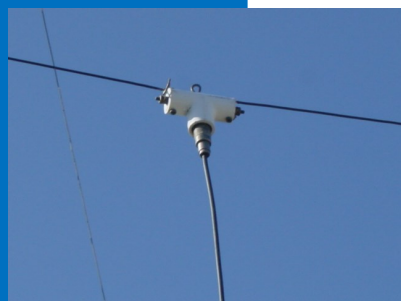
Back in June, 2010 we first looked at an analysis of various antennas using an antenna modeling tool called EZNEC. A few surprises and a considerable amount of insight resulted from that earlier effort. Building on that effort, we revisit those simple dipole configurations with some newer configurations that have been introduced since that time. With EZNEC 6+ we'll be able to compare 'apples to apples' in terms of gain, directivity, matching requirements and bandwidth performance.

But wait, there's more! Constraints such as cost, complexity, lot size, height limitations, and possibly the need for stealthy approaches will be discussed. We'll examine some of the pros and cons of various tradeoff options, as well. Whether you are a beginner or a veteran ham, bring your ideas and success stories to the meeting because this is one exciting presentation that you won't want to miss.



Rich's Background:

Extra Class Ham, Licensed since 1962, VE,
B.S. Electrical Engineering



More this Month

Weekly

The Freedom Square Diner in Monaca has a great wait staff. Come let them take your order.

Thursday Morning Breakfast
(or you can have lunch)



The BVARA meets every Thursday at the Freedom Square Diner in Center Township, just to the right of the Cinemark Center Township Marketplace at 09:30 AM. All radio amateurs and those interested in amateur radio are encouraged to come join us at our Thursday morning breakfast.

See you
Thursday at



The eQRM urges all Beaver County licensed amateurs to participate in the County's RACES and ARES programs.

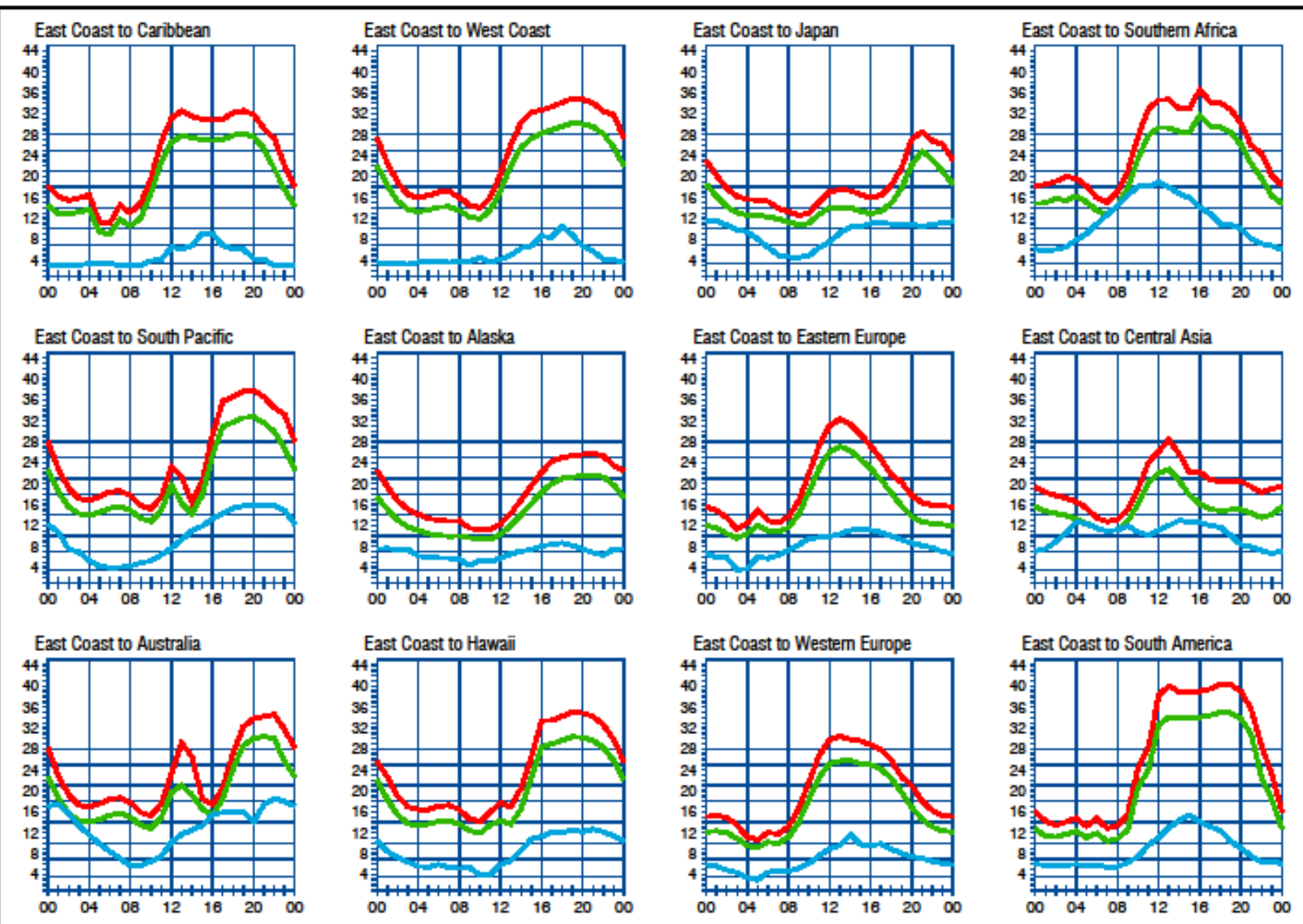
Any Beaver County Amateur that is interested in participating in the RACES/ARES programs can do so by checking into the Beaver County Public Service Net which meets every Monday evening at 8:30 PM local time on the N3TN 146.850 MHz repeater (131.8 PL)

RACES / ARES

The eQRM Urges All County Hams to Participate.



Propagation



When are the bands open? These charts, generated using CAPman, show probabilities for average HF propagation in the month of October. On 10% of the days of this period, the highest frequencies propagated will be at least as high as the upper red curves (HPF, highest possible frequency) and on 50% of the days they will be at least as high as the green curves (MUF, classical maximum usable frequency). The blue curves show the lowest usable frequency (LUF) for a 1500-W CW transmitter. For SSB or a lower transmitter power, the LUF will be somewhat higher than the blue curves indicate. The horizontal axes show Coordinated Universal Time (UTC), and the vertical axes frequency in MHz. The predictions assume an observed 2800-MHz solar flux value of 98.

PROPAGATION

The East Coast propagation chart listed here is for October 2017.

If you would like more information in general, please visit <http://www.arrl.org/propagation>

Get your License or Upgrade

If you are interested in getting your first FCC license or upgrading your current amateur radio license, the Beaver Valley Amateur Radio Association holds VE Test sessions (Volunteer Examinations) the second Thursday of each month at the Nine One One center in Ambridge Pennsylvania prior to our BVARA Club meeting. If there is no meeting there is no test session. Please come take your test with us!

For more information, contact :
Rich Soltesz, K3SOM
(724) 847-0610
k3som@arrl.net



VE TEST SESSIONS

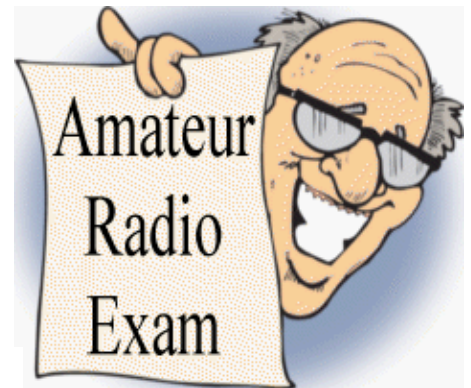
Beaver County Emergency Services Center 351 14th Street Ambridge, PA 15003.
Tests begin promptly at 5 pm on the same day as BVARA Club Meetings
(the second Thursday of the month).
All classes of amateur radio license tests are administered.

ALL candidates MUST bring ALL of the following:

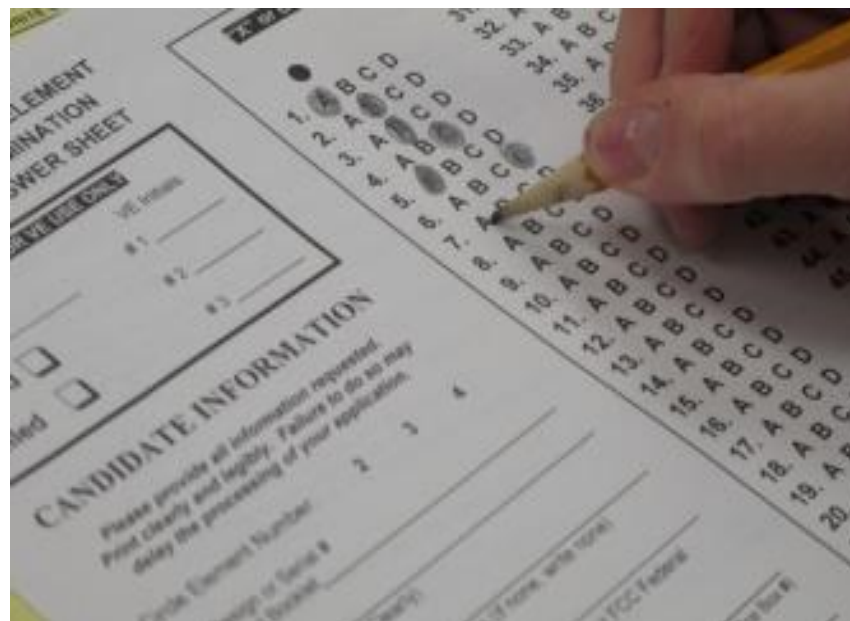
1. 2 forms of I.D. - one MUST be a photo I.D.
2. A pencil AND a pen with blue or black ink.
3. The original AND a photocopy of any valid ham license.
4. The original AND a photocopy of any C.S.C.E.
5. The test fee of \$15 - cash, check, or money order.

New License and Upgrades

BVARA VE Testing



Timothy Tress, KA3JRT received his Amateur Extra. Great! Good for you Tim!



Membership Information

By becoming a BVARA member you help secure the future of Amateur Radio in Beaver County. Additionally, the BVARA receives a portion of each ARRL

membership you purchase!

Join the BVARA and ARRL

Sign up for:

Price

- | | | |
|--|-------|-------|
| <input type="checkbox"/> BVARA full membership | 20.00 | _____ |
| <input type="checkbox"/> BVARA student membership | 15.00 | _____ |
| <input type="checkbox"/> BVARA associate membership | 10.00 | _____ |
| <input type="checkbox"/> BVARA Child under 21 at home membership | 5.00 | _____ |
| <input type="checkbox"/> One year ARRL membership | 49.00 | _____ |

A Club Donation _____

ARRL Member? Yes No

Total Enclosed _____

Your License Class (If you have one.)

- | | |
|--------------------------------------|---------------|
| <input type="checkbox"/> Technician | Name _____ |
| <input type="checkbox"/> General | Address _____ |
| <input type="checkbox"/> Advanced | _____ |
| <input type="checkbox"/> Extra Class | Email _____ |

Phone _____

Your Call sign _____

Your Signature _____

Make check or money order payable to:

The Beaver Valley Amateur Radio Association, P.O. Box 424

South Heights, Pa 15081

Hamfests & General Announcements



GPS Coordinates: 40.2084 N, 80.2571 W scan above for directions or code

WACOM 2017 HAMFEST

Washington Amateur Communications Inc.

SUNDAY, NOVEMBER 5th 2017

WASHINGTON COUNTY FAIRGROUNDS

2151 North Main St.

WASHINGTON, PA 15301

8:00 A.M –3:00 P.M—Admission \$5.00

Doors open early for VENDOR SETUP Saturday Nov4th 6:30 p.m.

Talk in on 146.790 City-147.285 East-147.390 North-145.250 West -147.315 South- All PI-131.8

MAJOR VENDORS

Over 250 tables

KJI ELECTRONICS- -QUICKSILVER RADIO

MAIN PRIZES

**1ST
2nd
3rd
4th**

ICOM IC-7300 HF/50MHz TRANSCEIVER

YAESU FTM-3100R 144Mhz 65W FM Mobile Transceiver

YAESU FTM-3100R 144Mhz 65W FM Mobile Transceiver

YAESU FTM-3100R 144Mhz 65W FM Mobile Transceiver

BLACK BOX PRIZE'S ONLY 50 TICKETS Sold

MAIN DRAWING AT 1:00 P.M. NEED NOT BE PRESENT TO WIN

CONTACT FOR HAMFEST TABLES N3TIR bud@n3tir.com 724-350-6745

Vendor Forms located at www.wa3com.com under Hamfest tab

We will sell out ALL TABLE SPACE PLEASE CALL EARLY

6Ft TABLES SUPPLIED, cost \$12.00 ea. - Discount reserve more than (4) \$10.00ea.

ADMISSION not INCLUDED ON TABLES rentals

VE TESTING TIME 8:00am

BREAKFAST AND LUNCH WILL BE AVAILABLE

DOOR PRIZES—YL PRIZE—DX CARD CHECKER

THE MEADOWS CASINO & Tanger Outlets less than 2 miles

Send all vendor payments to address below for tables

Please include vendor form and make checks payable to

Washington Amateur Communications

Mail to Norma Plants N3YJJ

236 Chambers Ridge Road West Alexander, Pa 15376

Contest Corral — October 2017

Check for updates and a downloadable PDF version online at www.arrl.org/contests.

Refer to the contest websites for full rules, scoring information, operating periods or time limits, and log submission information.

Start - Finish Date-Time	Finish Date-Time	Bands	Contest Name	Mode	Exchange	Sponsor's Website
1 0000	1 0400	3.5-14	North American SSB Sprint	Ph	Other's call, your call, serial, name, SPC	sbsprint.com/rules
1 0800	1 0900	3.5	UBA ON Contest, SSB	Ph	RS, serial, ON Section (if any)	www.uba.be/en
1 1300	4 0800	1.8-144	Classic Exchange, Phone	Ph	Name, RS, SPC, radio	www.classicexchange.org
1 2000	1 2200	7-21	Peanut Power QRP Sprint	CW Ph	RS(T), SPC, mbr or power	www.nogogrp.org
2 0800	8 2000	All	ICRP Quarterly Marathon	CW Ph Dig	RS(T)	www.icrpontabelluna.it
3 0100	3 0300	3.5-28	ARS Spartan Sprint	CW	RST, SPC, power	arsqr.blogspot.com
3 0700	3 1000	3.5-7	German Telegraphy Contest	CW	RST, LDK (if any)	www.skgow.org/index.php/en
4 1900	4 2300	432	432 MHz Fall Sprint	CW Ph Dig	6-char grid square	svhfs.org
4 2000	4 2100	3.5	UKEICC 80-Meter Contest	Ph	4-char grid square	www.ukaicc.com
5 1700	5 2000	3.5	SARL 80-Meter QSO Party	Ph	RS, serial, grid locator	www.sarl.org.za
5 1700	5 2100	28	NRAU 10-Meter Activity Contest	CW Ph Dig	RS(T), 6-char grid square	www.nrau.net
6 1400	8 0200	Any	YLRL DXNA YL Anniversary Contest	CW Ph Dig	Serial, RS(T), section/province/country	ylrl.org
7 0000	8 2359	50-1296	ARRL EME Contest	CW Ph Dig	Signal report	www.arrl.org/eme-contest
7 0800	8 1800	3.5-28	GTC CW Cup	CW	RST, mbr or "NM"	www.raag.org
7 0800	7 1400	902 and up	Microvave Fall Sprint	CW Ph Dig	6-char grid square	svhfs.org
7 0800	8 0800	1.8-28	Oceania DX Contest, Phone	Ph	RS, serial	www.oceaniadxcontest.com
7 1200	8 1159	1.8-28	Russian WW Digital Contest	Dig	RST(Q), Oblast code or serial	www.rdrclub.ru
7 1200	8 1200	3.5-28	TRC DX Contest	CW Ph	RST, "TRC" or ITU zone	www.tredx.org/tredx
7 1200	8 2359	1.8-50	SKCC Weekend Sprintathon	CW	RST, SPC, name, mbr or "hono"	www.skccgroup.com
7 1800	8 1100	3.5-7	International HELL-Contest	Dig	RST, serial	darc.de/darc-club/hoforsta/ukw-funk-sport
7 1800	8 2200	1.8-28	California QSO Party	CW Ph	Serial, county or SPC	www.cqp.org/Rules.html
7 1700	7 2100	3.5-28	FISTS Fall Slow Speed Sprint	CW	RST, SPC, name, mbr or power	fistsna.org
7 1900	8 1900	14-28	WAB HF Phone	Ph	RS, serial, WAB square or country	wab.internip.net
8 0500	8 2300	3.5-28	RSGB DX Contest	CW Ph	RS(T), serial	www.rsgboc.org/hf
8 0530	8 0800	3.5	UBA ON Contest, CW	CW	RST, serial, ON Section (if any)	www.uba.be/en
8 0800	8 1000	50	UBA ON Contest, 6 Meters	CW Ph	RS(T), serial, ON Section (if any)	www.uba.be/en
9 0000	9 0200	1.8-28	4 States QRP Group Second Sunday Sprint	CW Ph	RS(T), SPC, mbr or power	www.4sqrp.com/SSS
9 1900	9 2030	3.5	RSGB 80-Meter Autumn Series, CW	CW	Other's call, your call, serial, name	www.rsgboc.org/hf
10 0001	10 2359	28	10-10 International 10-10 Day Sprint	CW Ph Dig	Name, mbr or "to," SPC	www.ten-ten.org
11 0030	11 0230	3.5-14	NAQCC CW Sprint	CW	RST, SPC, mbr or power	naqcc.info
14 0000	15 1559	3.5-28	Makrothon RTTY Contest	Dig	4-char grid square	www.pl259.org/makrothon/makrothon-rules
14 0800	15 0800	1.8-28	Oceania DX Contest, CW	CW	RST, serial	www.oceaniadxcontest.com
14 1200	15 1200	3.5-28	Scandinavian Activity Contest, SSB	Ph	RST, serial	sactest.net/blog/rules
14 1600	15 2200	1.8-144	Pennsylvania QSO Party	CW Ph Dig	Serial, county or SPC	www.nitany-arc.net
14 1600	15 2359	1.8-144	Arizona QSO Party	CW Ph Dig	Serial, county or SPC	www.azqsoparty.org
14 1700	14 2100	3.5-28	FISTS Fall Unlimited Sprint	CW	RST, SPC, name, mbr or power	www.fistsna.org
14 2000	15 2000	1.8	PODXS 070 Club 160-Meter Great Pumpkin Sprint	Dig	RST, SPC	www.podxs070.com
15 0000	15 0200	14-21	Asia-Pacific Fall Sprint, CW	CW	RST, serial	jafc.org/apfsprint/aprule.txt
15 0700	15 1000	144	UBA ON Contest, 2 Meters	CW Ph	RS(T), serial, ON Section (if any)	www.uba.be/en
16 0100	16 0300	1.8-28	Run for the Bacon QRP Contest	CW	RST, SPC, mbr or power	qrpcontest.com/pigrun
16 1300	20 2359	All (in WARC)	ARRL School Club Roundup	CW Ph	RS(T), Class (W/C/S), SPC	www.arrl.org/school-club-roundup
16 1900	17 0300	1.8-UHF	Telephone Pioneers QSO Party	CW Ph Dig	RS(T), Chapter number (if any), name	www.tpqso.com
18 1900	18 2030	3.5	RSGB 80-Meter Autumn Series, Data	Dig	Other's call, your call, serial, name	www.rsgboc.org/hf
20 1600	20 2000	1.8-7	MCG Autumn Sprint	CW Ph	RS(T), serial	mcg-club.ru/index-eng.html
21 0000	22 2359	3.5-28	JARTS WW RTTY Contest	Dig	RST, operator age	jarts.jp/rules2017.html
21 0001	22 2359	28	10-10 International Fall Contest, CW	CW	Name, mbr or "to," SPC	www.ten-ten.org
21 0700	21 2159	3.5-28	RCB XYL Test	Ph	RS, serial, OMYL	www.radioclubbergantinios.es
21 1400	22 0200	All	New York QSO Party	CW Ph Dig	RS(T), county or SPC	www.nyqrp.org
21 1500	22 1459	3.5-28	Worked All Germany Contest	CW Ph	RS(T), DOK area code or "NM" or serial	darc.de/darc-club/hoforsta/ukw-funk-sport
21 1500	22 1500	1.8	Slow Perry Topband Challenge	CW	4-char grid square	www.kdn.net/stow
21 1800	22 1800	1.8-144	South Dakota QSO Party	CW Ph Dig	RS(T), county or SPC	www.kb0wsw.com/SDQP
21 2000	21 2359	1.8-50	Fold Hill Sprint	Dig	RST, mbr (if any), SPC, grid	sites.google.com/site/foldhillclub
22 1700	23 0100	1.8-144	Illinois QSO Party	Ph	RS(T), county or SPC	www.w9ews.org/IQOP.html
22 1900	22 2030	3.5	RSGB RoLo, CW	CW	RST, previous 6-char grid square received	www.rsgboc.org/hf
25 0000	25 0200	1.8-28	SKCC Sprint	CW	RST, SPC, name, mbr or power	www.skccgroup.com
25 2000	25 2100	3.5	UKEICC 80-Meter Contest	CW	4-char grid square	www.ukaicc.com
26 1900	26 2030	3.5	RSGB 80-Meter Autumn Series, SSB	Ph	Other's call, your call, serial, name	www.rsgboc.org/hf
28 0000	29 1600	50, 144	Azucaria VHF Contest	CW Ph	RS(T), 6-char grid square	www.zvhf.com
28 0000	29 2359	1.8-28	CQ Worldwide DX Contest, SSB	Ph	RS, CQ Zone	www.cqww.com/rules.htm

All dates refer to UTC and may be different from calendar dates in North America. Times given as AM or PM are local times and dates.

No contest activity occurs on the 60-, 30-, 17-, and 12-meter bands. Mbr = Membership number. Serial = Sequential number of the contact. S/P/C = State, Province, DXCC Entity. XE = Mexican state. Data for Contest Corral is maintained on the WA7BNM Contest Calendar at www.homucopia.com/contestcal and is extracted for publication in QST 2 months prior to the month of the contest. ARRL gratefully acknowledges the support of Bruce Horn, WA7BNM, in providing this service. Listings in blue indicate contests sponsored by ARRL or NCJ. The latest time to make a valid contest QSO is the minute listed in the "Finish Time" column.

Bits and Pieces

For the month of October I introduce KT3HC, Herb Lawrence, in my “Interview with a Ham”. The first time I saw Herb was at one of the regular monthly Beaver Valley Amateur Radio Association second Thursday meetings. I was there to take my first FCC test to become licensed as a Technician. He was intimidating to me. He was one of the Volunteer Examiners! They were all intimidating. As I have gotten to know all the VEs, they are not intimidating. They are very nice. They are professional and kind too. I am proud to be associated with them as part of the BVARA Club.



My interview with Herb went like this... Did you ever build a crystal radio? *Yes, my parents bought me a radio kit for Christmas one year. I was about 8 or 9 years old. One Sunday afternoon my father helped me put it together. No matter how hard we tried we couldn't hear any stations. My father said you have to get that cat's whisker just right. After quite a few days I finally got to hear something. I excitedly told my sister, she didn't believe me. She wouldn't even come take a listen. I couldn't wait for my father to come home and see that I got it working! When Dad got home it didn't work. I was so disappointed. I fooled with it and got it working! I really had a sense of accomplishment. I think my Dad was proud of me too.*

Did you ever listen to shortwave? *Yes. Let me tell you about it. When television was new in our area I knew a store that sold them (TVs). The owner let me know that if someone referred a customer that purchased a TV they would receive a gift. I did just that. I had some neighbors that purchased a TV at my referral. I got an AC/DC radio that received shortwave as the free gift. I listened to it a lot.*

As a child, I was always messing with wire, nails or whatever trying to make things. (I am the same way as an adult). I did TV and radio repair. I never built a Ham radio. I did build test equipment though; like things to test capacitors, a tube tester, and etc. I still have a tube voltmeter I built. From childhood to being an adult I was interested in radio. I worked all the time and didn't have time to get into Amateur radio. After I retired, I visited with some friends by my cabin in McKean County. They were hams. That is how I got started in amateur radio. I am a relatively new Ham. I started in 2004. I enjoy it and encourage others to get into the radio hobby.

These are a couple highlights from our interview. I really enjoyed talking to Herb and getting to know him better. I know you will too.

Be courteous on the air, be safe and have fun with your hobby. Till next month, 73 KC3BXC.

Interview with a Ham

Name : Herb Lawrence

Call sign and license class: KT3HC, Amateur Extra

Year of first FCC License : 2004

Did you ever make a crystal radio? Yes, a Christmas gift from my folks.

Did you ever listen to short wave radio? Yes, an AC/DC unit that picked up SW.

Did you ever use CB radio? Oh yes, in my younger days. A little before and a little after 1959, I always had an 11 meter whip on my car.

How did you get interested in Ham Radio? A Ham friend from McKean County Pa, near my camp.

What was your first radio? A hand held Yasue VX-7R.

What was your first antenna? An 80M dipole.

What is your current antenna & radio? An Icom 7200 and a G5RV.

What are your favorite modes to operate? SSB voice.

Your most memorable contact? Don't ask me his name or call sign... He was from Scotland! He was my first DX! He sounded like he was in the next room.

What was your most fun contact? It was near Charlotte North Carolina. I talked to a bunch of Nascar Drivers. They sent me a very nice group QSL poster, not a card.

What part of the hobby interests you the most? (field day, home brewing, contesting, Hamfests, restoring old radios) Hardware. I like getting things to work. I like working with my hands and getting things to operate correctly.

Have you ever been on a fox hunt? No.

Do you use a logging program? (what is it) Yes, a paper and pencil.

Would you purchase a Software Defined Radio? No, probably not.

Do you use automation with your Ham Radio? No.

If you had a magic wand and could change Ham radio what would you change and why? I would like to see more programs to get people interested in the emergency side of Amateur Radio Service.

Where do you see ham radio in ten years? More digital and miniaturization. A wrist watch that you connect to a wire and operate all bands.

It's Your Dime

Remember back when you could communicate by “Pay Phone” for ten cents? This page is for anyone who wants to communicate with the BVARA community and beyond. Please send me your article that you would like posted on this page. Please, only topics and language in good taste. As the editor I reserve the option to post it or ignore it. Send your dime to me at: kc3bxc.73@gmail.com



Some Interesting Links



The considerate Ham frequency guide <http://www.arrl.org/files/file/conop.pdf>

Arrl podcast biweekly <http://www.arrl.org/files/file/DoctorPodcast/May%2011%20-%20Receiver%20Performance.mp3>

Your call sign stickers and such <http://yourcallsignhere.com/>

Your call sign hats and more <http://www.hamcrazy.com/>

ARRL first contact advice <http://www.arrl.org/making-your-first-contact>

ARRL store <http://www.arrl.org/shop/What-s-New/>

What is WAS <http://www.arrl.org/was>

What is DXCC <http://www.arrl.org/dxcc>

What is WAC <http://www.arrl.org/wac>

For All Radio Operators

Whether at home or



on the roam



The Amateur's Code

CONSIDERATE ...never knowingly operates in such a way as to lessen the pleasure of others.

LOYAL ...offers loyalty, encouragement and support to other amateurs, local clubs, and the American Radio Relay League, through which Amateur Radio in the United States is represented nationally and internationally.

PROGRESSIVE ...with knowledge abreast of science, a well-built and efficient station and operation above reproach.

FRIENDLY ...slow and patient operating when requested; friendly advice and counsel to the beginner; kindly assistance, cooperation and consideration for the interests of others. These are the hallmarks of the amateur spirit.

BALANCED ...radio is an avocation, never interfering with duties owed to family, job, school or community.

PATRIOTIC ...station and skill always ready for service to country and community.