

THE eQRM

OCTOBER 2018



The BVARA in Beaver County Pennsylvania

Beaver Valley Amateur Radio Association

W3SGJ

Repeater 145.310 PL 131.8

On the cover: October can be spectacular in Pennsylvania. This beautiful Western Pennsylvania fall landscape was taken by Tim Hoeflich along Eberly Road near Avella Pennsylvania. Great photo Tim!

Inside this edition

Who We Are	3	Radio Sport	12
This Month	4	Bits and Pieces	14
Propagation	6	It's Your Dime	14
Get a License or Upgrade	7	Remembering a Silent Key	15
New License and Upgrades	8	Of Interest to All BVARA Members	16
Membership	9		
Hamfests & General	10		

Check into our nets

Wednesday 2 Meter

8:30PM on 145.310 MHz PL 131.8

Wednesday 10 Meter

9:00PM on 28.470 MHz

The eQRM is a publication of the Beaver Valley Amateur Radio Association (BVARA) and is Copyright 2010 - 2018. All material presented in this publication is not necessarily the views of the American Radio Relay League (ARRL), BVARA, or members of the said organizations. If you would like to contact the editor of the eQRM, please email David at kc3bxc.73@gmail.com. Please visit us online at www.W3SGJ.org. To subscribe to our newsletter, please visit W3SGJ.org/newsletter.php

Who We Are

2018 BVARA OFFICERS

President: Jack Spencer, KZ3Z

Vice President: Dan Grazulis, KB3VSP

2nd Vice Pres.: Doug Lawrence, K3GTX

Treasurer: Pam Spencer, W3PMS

Secretary: Norm Trunick, K3NJT

Director: Tony Pavilonis, W6PEF

Director: Bob Winkle, N3AZZ

Trustee: Rich Soltesz, K3SOM

MONTHLY MEETINGS

E-Board meetings are now held the Saturday before the monthly club meeting.

VE testing begins at 5:00 PM.

Regular meetings are at 6:30 PM

All meetings are held at the
Beaver County
Emergency Services Center
351 14th Street
Ambridge, PA 15003
on the second Thursday of every month
(unless otherwise stated).

2018

Oct 11

Nov 08

Dec 08 Christmas Party 7 PM

2019

Jan 10

Feb 14

Mar 14

Apr 11

May 09



This Month

Speaker:

Rich Soltesz

K3SOM

Topic:

Nine DXpeditions to DXCC 'Ten Most Wanted'

Including:

Continuing with our BVARA Presentation Series this year, our topic this month is about DXpeditions. A DXpedition is an expedition to what is considered an exotic place by amateur radio operators, perhaps because of its remoteness, access restrictions or simply because there are very few radio amateurs active from that place. This could be an island, a country, or even a particular spot on a geographical grid. DX is a telegraphic shorthand for 'distance' or 'distant'. Bob Allphin, K4UEE has created several DVDs from recent DXpeditions. We will show one of his DVDs that describes nine 'adventures' to the 'Ten Most Wanted' DXCC locations. This description is from his web site at <http://www.k4uee.com/dvd> as given below.

3YØX, Peter One -- Nearly 90,000 Qs from the bottom of the world

A52A, Bhutan -- the mysterious and exciting Kingdom nestled in the Himalayas
(footage and edited sequences contributed by James Brooks, 9V1YC)

AH1A, Howland Island -- where Amelia Earhart disappeared

K5D, Desecheo Island - So Rare, So Near, yet so Far

PJ6A, Saba - First contacts from a brand new DXCC entity

VKØIR, Heard Island -- with its ominous and active volcano rising to 8,000ft

VP8GEO, South Georgia -- the final resting place of Sir Ernest Shackleton

VP8THU, South Sandwich -- nearly 30,000 Qs in a three-day, commando-like strike

VU7RG, Lakshadweep -- From the #2 most wanted DXCC entity

These nine DXpedition video excerpts tell compelling stories of fear, frustration and sheer joy as DX traveler Bob Allphin, K4UEE and his intrepid teammates recount the highlights (and lowlights) of their most heralded trips, most named 'DXpeditions of the Year' -- and all to the rarest-of-the-rare DXCC entities. It's personal, emotional, humorous and sometimes frightening. It's about ham radio... but as you will see -- "it ain't all about radio". This is one presentation you won't want to miss!

Rich's Background:

Extra Class Ham, Licensed since 1962, VE,
B.S. Electrical Engineering,



More this Month

Weekly

The Freedom Square Diner in Monaca has a great wait staff. Come let them take your order.

Thursday Morning Breakfast
(or you can have lunch)



The BVARA meets every Thursday at the Freedom Square Diner in Center Township, just to the right of the Cinemark Center Township Marketplace at 09:30 AM. All radio amateurs and those interested in amateur radio are encouraged to come join us at our Thursday morning breakfast.

See you Thursday at



The eQRM urges all Beaver County licensed amateurs to participate in the County's RACES and ARES programs.

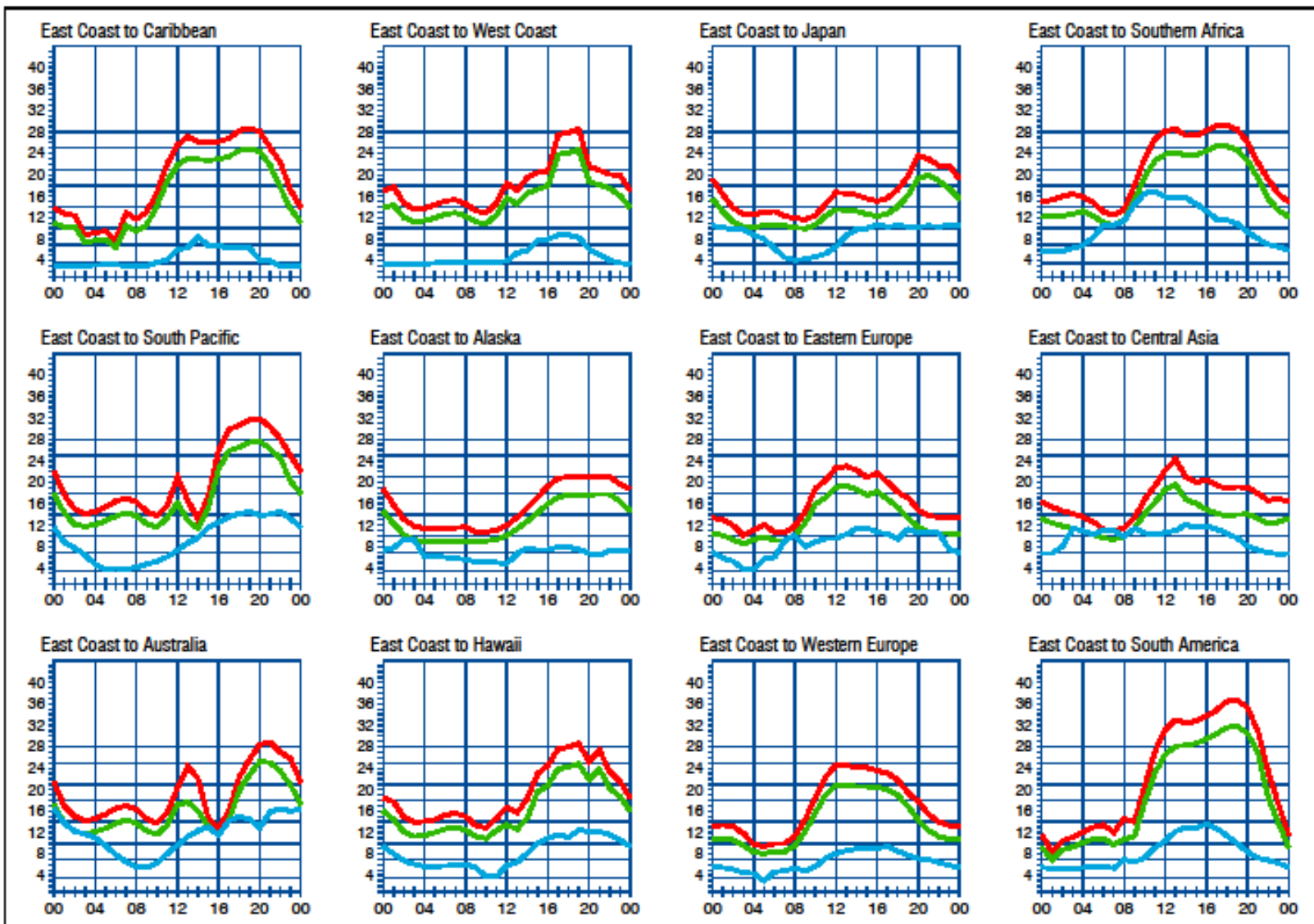
Any Beaver County Amateur that is interested in participating in the RACES/ARES programs can do so by checking into the Beaver County Public Service Net which meets every Monday evening at 8:30 PM local time on the N3TN 146.850 MHz repeater (131.8 PL)

RACES / ARES

The eQRM Urges All County Hams to Participate.



Propagation



When are the bands open? These charts, generated using CAPman, show probabilities for average HF propagation in the month of **October** for the paths indicated. The horizontal axes show Coordinated Universal Time (UTC), and the vertical axes frequency in MHz. On 10% of the days of this period, the highest frequencies propagated will be at least as high as the upper red curves (HFF, highest possible frequency) and on 50% of the days they will be at least as high as the green curves (MUF, classical maximum usable frequency). The blue curves show the lowest usable frequency (LUF) for a 1500-W CW transmitter. For SSB or a lower transmitter power, the LUF will be somewhat higher than the blue curves indicate. See Oct 1994 QST, pp 27-30, and Feb 1995 QST, pp 34-36, for more details. The predictions assume an observed 2800-MHz solar flux value of 70. This is a Very Low level of solar activity. See the detailed propagation tables on *The ARRL Antenna Book CD-ROM*.

PROPAGATION

The East Coast propagation chart listed here is for October 2018.

If you would like more information in general, please visit <http://www.arrl.org/propagation>

Get your License or Upgrade

If you are interested in getting your first FCC license or upgrading your current amateur radio license, the Beaver Valley Amateur Radio Association holds VE Test sessions (Volunteer Examinations) the second Thursday of each month at the Nine One One center in Ambridge Pennsylvania prior to our BVARA Club meeting. If there is no meeting there is no test session. Please come take your test with us!

For more information, contact :
Rich Soltesz, K3SOM
(724) 847-0610
k3som@arrl.net



VE TEST SESSIONS

Beaver County Emergency Services Center 351 14th Street Ambridge, PA 15003.
Tests begin promptly at 5 pm on the same day as BVARA Club Meetings
(the second Thursday of the month).
All classes of amateur radio license tests are administered.

ALL candidates MUST bring ALL of the following:

1. 2 forms of I.D. - one MUST be a photo I.D.
2. A pencil AND a pen with blue or black ink.
3. The original AND a photocopy of any valid ham license.
4. The original AND a photocopy of any C.S.C.E.
5. The test fee of \$15 - cash, check, or money order.

New License and Upgrades

BVARA VE Testing



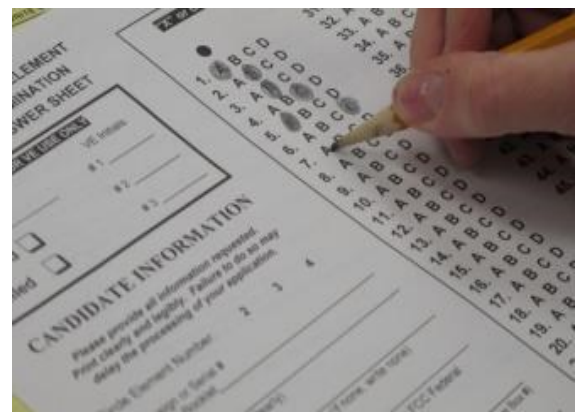
Here's the list of participants in our VE process this past month:

Patrick Chalupiak, KC3MBO - Technician, Baden, PA (Father) *

Michael Chalupiak, KC3MBP - Technician, Baden, PA (Son) *

Within two or three days of getting his new call sign, Patrick checked into the BVARA 2-meter net. Perhaps Michael had homework that night!

*Eligible for BVARA membership at no cost for 2018



Membership Information

By becoming a BVARA member you help secure the future of Amateur Radio in Beaver County. Additionally, the BVARA receives a portion of each ARRL membership you purchase!

Join the BVARA and ARRL

Sign up for:

Price

- | | | |
|--|-------|-------|
| <input type="checkbox"/> BVARA full membership | 20.00 | _____ |
| <input type="checkbox"/> BVARA student membership | 15.00 | _____ |
| <input type="checkbox"/> BVARA associate membership | 10.00 | _____ |
| <input type="checkbox"/> BVARA Child under 21 at home membership | 5.00 | _____ |
| <input type="checkbox"/> One year ARRL membership | 49.00 | _____ |

A Club Donation _____

ARRL Member? Yes No

Total Enclosed _____

Your License Class (If you have one.)

- | | |
|--------------------------------------|---------------|
| <input type="checkbox"/> Technician | Name _____ |
| <input type="checkbox"/> General | Address _____ |
| <input type="checkbox"/> Advanced | _____ |
| <input type="checkbox"/> Extra Class | Email _____ |

Phone _____

Your Call sign _____

Your Signature _____

Make check or money order payable to:

The Beaver Valley Amateur Radio Association, P.O. Box 424

South Heights, Pa 15081

Hamfests & General Announcements

58th Annual Hamfest and Auction Sunday, October 28, 2018

MASSILLON AMATEUR RADIO CLUB

Massillon Boy's & Girl's Club

730 Duncan ST SW, Massillon OH

Setup at 6:00 a.m. Doors open at 8:00 a.m.

13,000 sq ft : Handicap Accessible : All Indoors : Free Parking



ARRL APPROVED HAMFEST
Still just \$5.00 General Admission!

Under 12 Free. Admission Ticket good for all main and door prizes

Tables Rental only \$14.00 each. Free electric available on a limited basis

PRIZES

Main Prize Drawing at 1:00

1st Prize - Yaesu FT-8900

2nd Prize - MFJ 259C Analyzer

3rd Prize - Dual Band J-Pole

**Need not be present for Main Prizes but must
be present for all other prizes.**

AUCTION

**Auction begins at 10:00 a.m. 15%
Commission charged on all items
sold. You may buy back your own
items at no charge. MARC reserves
the right to limit the amount and/or
type of items sold at the Auction!
No Computer Equipment!**

VE LICENSE TESTING AVAILABLE BEGINNING AT 9:00 AM

For more information or Reservations:

**Terry Russ - N8ATZ 3420 Briardale Dr. NW
Massillon, OH 44646 Phone (330) 837-3091**

**Mobile Checkins & Directions on the 147.18+ Club Repeater
Sale of Illegal Amplifiers or Adult Material is Strictly Prohibited**

Contact us at truss@sssnet.com

WEB SITE <http://www.w8np.org>

Hamfests & General Announcements

NEW UPDATED LOCATION

Largest Indoor Hamfest in TRI-STATE AREA 19,000 Sq. Ft. under one roof

WACOM 2018 HAMFEST

Washington Amateur Communications Inc.

SUNDAY, NOVEMBER 4th 2018

The Printscape Arena at Southpointe

114 South pointe Blvd. Canonsburg Pa 15317



Exit 48 off Interstate 79

8:00 A.M –3:00 P.M—Admission \$5.00

Doors open early for VENDOR SETUP Saturday Nov 3rd 6:30 p.m.

Talk in on 146.790 City-147.285 East-147.390 North-145.250 West -147.315 South- All PI-131.8

MAJOR VENDORS

Largest Indoor Hamfest in TRI-STATE AREA 19,000 Sq. Ft. all under one roof

KJI ELECTRONICS- -QUICKSILVER RADIO –RW ANTENNA STORE

MAIN PRIZES

1ST Icom IC-7300 HF + 6m Multi Mode Transceiver

2nd YAESU FTM-3200DR 65w 145MHz C4FM/FM 2/ FM mobile

3rd YAESU FTM-3200DR 65w 145MHz C4FM/FM 2/FM mobile

4th YAESU FTM-3200DR 65w 145MHz C4FM/FM 2/FM mobile

BLACK BOX PRIZE'S ONLY 50 TICKETS Sold

MAIN DRAWING AT 1:30 P.M. NEED NOT BE PRESENT TO WIN

CONTACT FOR HAMFEST TABLES **N3TIR** bud@n3tir.com 724-350-6745

Vendor Forms located at www.wacomarc.org under Hamfest tab

We will sell out ALL TABLE SPACE PLEASE CALL EARLY

8Ft TABLES SUPPLIED, cost \$12.00 ea. ADMISSION is not INCLUDED ON TABLES

VE TESTING TIME 9:00 ARE

BREAKFAST AND LUNCH WILL BE AVAILABLE

DOOR PRIZES—YL PRIZE—DX CARD CHECKER

THE MEADOWS CASINO & Tanger Outlets less than 2 miles Now Hotel next door

Send all vendor payments to address below for tables

Please include vendor form and make checks payable to

WACOM c/o Norma Plants N3YJJ

236 Chambers Ridge Road West Alexander, Pa 15376

Bruce Draper, AA5B, aa5b.corral@gmail.com

Contest Corral

October 2018

Check for updates and a downloadable PDF version online at www.arrl.org/contests.

Refer to the contest websites for full rules, scoring information, operating periods or time limits, and log submission information.

Start - Finish Date-Time Date-Time	Bands	Contest Name	Mode	Exchange	Sponsor's Website
1 0800 7 2000	All	IQRP Quarterly Marathon	CW Ph Dig	RS(T)	www.arimontebelluna.it
2 0100 2 0300	3.5-28	ARS Spartan Sprint	CW	RST, SPC, power	arsqp.blogspot.com
3 0700 3 1000	3.5-7	German Telegraphy Contest	CW	RST, LDK (if DL)	www.agow.org
3 1900 3 2300	432	432 MHz Fall Sprint	any	6-char grid square	svhfs.org
3 2000 3 2100	3.5	UKEICC 80-Meter Contest	Ph	4-char grid square	www.ukelcc.com
4 1700 4 2000	3.5	SARL 80-Meter QSO Party	Ph	RS, serial, grid or QTH	www.sarl.org.za
4 1700 4 2100	28	NRAU 10-Meter Activity Contest	CW Ph Dig	RS(T), 6-char grid	www.nrau.net
5 1400 7 0200	All	YLRL DX/NA YL Anniversary Contest	CW Ph Dig	Serial, RS(T), SPC	ylrl.org
6 0600 7 1800	3.5-28	TRC DX Contest	CW Ph	RST, serial, "TRC" (if member)	www.trcdx.org/trcdx
6 0800 6 1400	902 and up	Microwave Fall Sprint	Any	6-char grid square	svhfs.org
6 0800 7 0800	1.8-28	Oceania DX Contest, Phone	Ph	RS, serial	www.oceaniadxcontest.com
6 1200 7 1159	1.8-28	Russian WW Digital Contest	Dig	RST(Q), oblast code or serial	www.rudclub.ru
6 1800 7 1100	3.5-7	International HELL Contest	Dig	RST, serial	www.darc.de
6 1800 7 2200	1.8-28	California QSO Party	CW Ph	Serial, county or SPC	www.cqp.org
6 1700 6 2100	3.5-28	FISTS Fall Slow Speed Sprint	CW	RST, SPC, name, mbr or power	fistsna.org
7 0500 7 2300	3.5-28	RSGB DX Contest	CW Ph	RS(T), serial	www.rsqoc.org/hf
7 0600 7 0900	3.5	UBA ON Contest, SSB	Ph	RS, serial, section (if ON)	www.uba.be/en
7 2200 7 2359	7-21	Peanut Power QRP Sprint	CW Ph	RS(T), SPC, peanut nr or power	nogapp.org/PeanutPower
8 1900 8 2030	3.5	RSGB 80-Meter Autumn Series, CW	CW	Other's call, your call, serial, name	www.rsqoc.org/hf
10 0001 10 2359	28	10-10 International 10-10 Day Sprint	CW Ph Dig	Name, mbr or "0," SPC	www.ten-ten.org
10 0030 10 0230	3.5-14	NAQCC CW Sprint	CW	RST, SPC, mbr or power	naqcc.info
13 0000 14 1559	3.5-28	Makrothen RTTY Contest	Dig	4-char grid square	www.pl259.org/makrothen
13 0300 14 2100	1.8-UHF	Nevada QSO Party	CW Ph Dig	Serial, county or SPC	nvqso.com
13 0800 14 0800	1.8-28	Oceania DX Contest, CW	CW	RST, serial	www.oceaniadxcontest.com
13 1200 14 1200	3.5-28	Scandinavian Activity Contest, SSB	Ph	RST, serial	www.sactest.net
13 1200 14 2359	1.8-50	SKCC Weekend Sprintathon	CW	RST, SPC, name, mbr or "none"	www.skccgroup.com
13 1200 14 2359	1.8-28	QRP ARCI Fall QSO Party	CW	RST, SPC, mbr or power	www.qrpaci.org
13 1800 14 2200	1.8-144	Pennsylvania QSO Party	CW Ph Dig	Serial, county or SPC	paqso.org
13 1700 13 2100	3.5-28	FISTS Fall Unlimited Sprint	CW	RST, SPC, name, mbr or power	www.fistsna.org
13 1700 14 0500	1.8-144	Arizona QSO Party	CW Ph Dig	Serial, county or SPC	www.azqsoqparty.org
13 1800 14 1800	1.8-144	South Dakota QSO Party	CW Ph Dig	RS(T), county or SPC	www.sdqsoqparty.com
13 2000 14 2000	1.8	PODXS 070 Club 160-Meter Great Pumpkin Sprint	Dig	RST, SPC	www.podxs070.com
14 0530 14 0800	3.5	UBA ON Contest, CW	CW	RST, serial, ON section (if ON)	www.uba.be/en
14 0800 14 1000	50	UBA ON Contest, 6 Meter	CW Ph	RST, serial, ON section (if ON)	www.uba.be/en
15 0000 15 0200	1.8-28	4 States QRP Group Second Sunday Sprint	CW Ph	RS(T), SPC, mbr or power	www.4sqrp.com
15 1300 19 2359	All	ARRL School Club Roundup	CW Ph	RS(T), Class (VCS), SPC	arrl.org/school-club-roundup
15 1800 16 0300	1.8-UHF	Telephone Pioneers QSO Party	CW Ph Dig	RS(T), chapter nr (if any), name	www.tpqso.com
17 1900 17 2030	3.5	RSGB 80-Meter Autumn Series, Data	Dig	Other's call, your call, serial, name	www.rsqoc.org/hf
20 0000 21 1600	50-144	Asucaria World Wide VHF Contest	CW Ph	RS(T), 6-char grid square	www.vvhf.com
20 0000 21 2359	3.5-28	JARTS WW RTTY Contest	Dig	RST, operator's age	jarts.jp/rules2018.html
20 0001 21 2359	28	10-10 International Fall Contest, CW	CW	Name, mbr or "0," SPC	www.ten-ten.org
20 1400 21 0200	All	New York QSO Party	CW Ph Dig	RS(T), county or SPC	www.nyqp.org
20 1500 21 1459	3.5-28	Worked All Germany Contest	CW Ph	RST, DOK or "NM" or serial	www.darc.de
20 1500 21 1500	1.8	Stew Perry Topband Challenge	CW	4-char grid square	www.k1m.net/stew
20 2000 20 2359	1.8-7, 21-60	Feld Hell Sprint	Dig	RST, mbr, SPC, grid	sites.google.com/site/feldhellclub
21 0000 21 0200	14-21	Asia-Pacific Fall Sprint, CW	CW	RST, serial	japo.org/lapsprint
21 0700 21 1000	144	UBA ON Contest, 2 Meter	CW Ph	RS(T), serial, ON section (if ON)	www.uba.be/en
21 1700 22 0100	1.8-144	Illinois QSO Party	Ph	RS(T), county or SPC	www.w9ave.org/ILQP.html
21 1900 21 2030	3.5	RSGB RoLo CW	CW	RST, previous 6-char grid square received	www.rsqoc.org/hf
22 0100 22 0300	1.8-28	Run for the Bacon QRP Contest	CW	RST, SPC, mbr or power	qrpcontest.com/pigrun
24 0000 24 0200	1.8-28	SKCC Sprint	CW	RST, SPC, name, mbr or power	www.skccgroup.com
25 1900 25 2030	3.5	RSGB 80-Meter Autumn Series, SSB	Ph	Other's call, your call, serial, name	www.rsqoc.org/hf
27 0000 28 2359	50-1296	ARRL EME Contest	CW Ph Dig	Signal report	www.arrl.org/eme-contest
27 0000 28 2359	1.8-28	CQ Worldwide DX Contest, SSB	Ph	RS, CQ zone	www.cqww.com
31 2000 31 2100	3.5	UKEICC 80-Meter Contest	CW	4-char grid square	www.ukelcc.com

All dates refer to UTC and may be different from calendar dates in North America. Contests are not conducted on the 60-, 30-, 17-, or 12-meter bands. Mbr = Membership number. Serial = Sequential number of the contact. SPC = State, Province, DXCC Entity, XE = Mexican state. Listings in blue indicate contests sponsored by ARRL or NCJ. The latest time to make a valid contest QSO is the minute listed in the "Finish Time" column. Data for Contest Corral is maintained in the WA7BNM Contest Calendar at www.contestcalendar.com and is extracted for publication in QST 2 months prior to the month of the contest. ARRL gratefully acknowledges the support of Bruce Horn, WA7BNM, in providing this service.

Bits and Pieces

Good golly where did summer go? !

The last few Ham Fests of 2018 will be taking place, these will be our last chances to make face to face QSOs with some of our radio friends. It's October already! We all know what that means; soon that cold white stuff will be coming down. It is time to finish any of the outside Ham tasks we have left to complete. We better get to it.



Last year around this time I wondered where all of our Amateur Radio pursuits would take us. I personally was hoping to have learned “the code” by now. “My Life’s Journey” took me on a different path for a few months. Getting an understanding of this new radio language is going to have to wait just a little bit longer for me. I did get to try out some digital. It took me two weeks to figure out all the new settings on my radio to transmit using FT-8. This was part of the fun, it was an adventure. Another radio milestone for me was a birthday gift. The birthday gift was getting a pole installed to raise my HF Antenna to some thirty feet of height. I have heard many countries I never heard before! This is so great! I thank my family and some friends (my Kathy, Zak, Adam P. and the other Adam N.) for this kindness. These two achieved landmarks have rekindled my fascination with radio and Ham frequencies in particular.

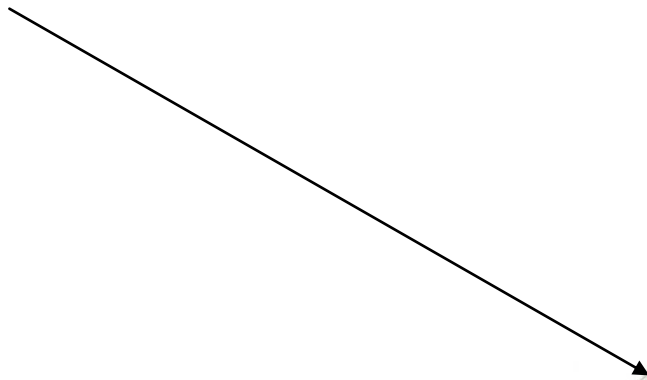
Well how about you? Did you get to do some new technique, type of transmission; digital maybe, did you upgrade your license, perhaps a new antenna or radio? Have you had any landmark or milestone achievements this year? How about sharing them with me, I will put them here in the newsletter. What do you have planned for your winter? I encourage you to work/plan some new goal in your amateur radio adventures! Don’t get stagnant; How about teaching some younger person about Ham radio. Could you pour a little knowledge into a newbie?

Whatever you do, do it with great passion. Till next month 73 KC3BXC clear and listening...

Be courteous on the air, be safe and have fun with your hobby.

It's Your Dime

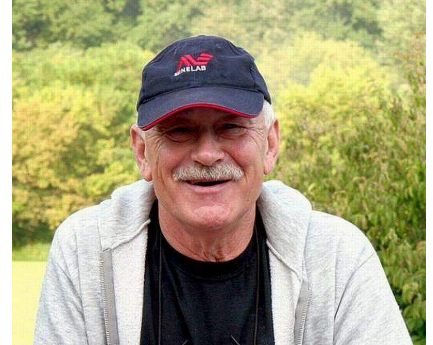
Remember back when you could communicate by “Pay Phone” for ten cents? This page is for anyone who wants to communicate with the BVARA community and beyond. Please send me your article that you would like posted on this page. Please, only topics and language in good taste. As the editor I reserve the option to post it or ignore it. Send your dime to me at: kc3bxc.73@gmail.com



Remembering a Silent Key

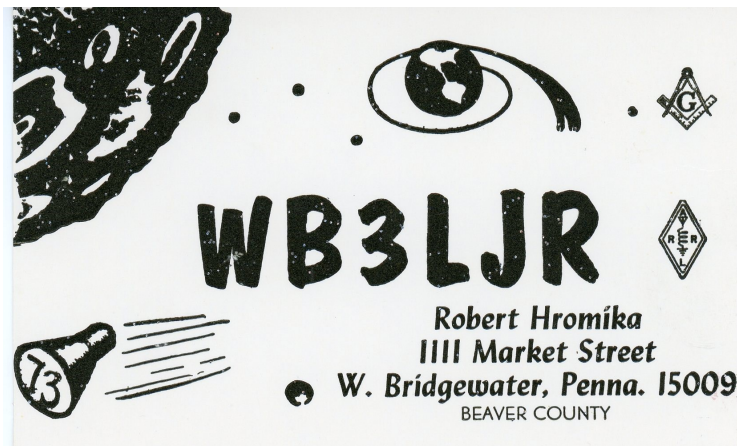
Here is a silent key story from Adam Horniak KG3L about his pal Robert Hromika WB3LJR:

Bob and I shared two hobbies, Ham Radio and Metal Detecting. Bob was more serious about metal detecting than I was. He was a member of the Butler County Treasure Hunters Club. He also organized and established the Beaver County Detecting Club (B.C.D.C). I saw Bob from time to time in the Power Plant I worked at. The Plant brought him in as a contractor during outages, he was a member of the Steamfitters Union.



Bob was a big joker, not mean spirited just a real joker! We went up to Pittsburgh to take our General Ham Operators test. At that time FCC tests were administered in the Federal Building on Liberty Avenue in Pittsburgh. We entered the building and stepped onto the elevator; it was already full of scholarly working people. There were gentlemen & ladies dressed in suits and ties, carrying briefcases; very professional! Bob starts talking in the elevator, not to anyone in particular. "Boy what a day I am having today "My wife had called me and shared the details of her first bowel movement after her hemorrhoid operation while I was driving and I had to cut it short because I got a flat tire on the way here" what else can go wrong? I tried to move away from him and pretended I didn't know him. What a joker! His comments were followed by dead silence; well maybe I may have heard a few suppressed giggles. I was overwhelmingly relieved when the door opened and we could get out of that elevator on our floor.

Oh by the way we both passed our General exams.



The QSL Card above has a special meaning to me as I was Bob's first contact and this is the card confirming our contact.

73 Adam KG3L

Of Interest to All BVARA Members

During the September 14, 2018 BVARA Club Meeting there were a lot of important topics discussed. I wanted to share them here with all the BVARA membership so they are not forgotten or overlooked.

1. The BVARA Christmas party will be December 8, 2018 at 7 PM. It will take place in the back room of Yolanda's Italian Restaurant at 2228 Darlington Road, Beaver Falls (Chippewa). See Norm for more information.



2. There will be a gathering at Rich's house for the October 13-14 2018 (Saturday & Sunday) Pa QSO Party. We will use the W3SGJ Club call so please listen for us. Contact Rich for specifics.



3. Dues for the BVARA Club will be going up next year. A one-year membership will now be \$25. All membership fees can be paid in January or earlier, but the membership fee will be due no later than February 01. A \$5 fee will be required for any previous-year member who fails to pay current dues by the deadline. Any new members wanting to join later in the year will be charged a pro-rated fee based on the full months remaining in the year. In accordance with our club bylaws, these changes require approval at two consecutive meetings. The first approval was received at the September 2018 meeting.

**MEMBERSHIP
RENEWAL**
Annual Dues