

# THE eQRM

SEPTEMBER 2018



## The BVARA in Beaver County Pennsylvania

Beaver Valley Amateur Radio Association

W3SGJ

Repeater 145.310 PL 131.8

**On the cover:** Here is a beautiful photograph of the Ohio river with two of Beaver County's main bridges . Photo courtesy of QuippaDrone this past Labor Day 2018.

## Inside this edition

Who We Are	3	Radio Sport	11
This Month	4	Bits and Pieces	12
Propagation	6	It's Your Dime	13
Get a License or Upgrade	7	Silent Key items for sale	15
New License and Upgrades	8		
Membership	9		
Hamfests & General	10		

### Check into our nets

#### Wednesday 2 Meter

**8:30PM on 145.310 MHz PL 131.8**

#### Wednesday 10 Meter

**9:00PM on 28.470 MHz**

The eQRM is a publication of the Beaver Valley Amateur Radio Association (BVARA) and is Copyright 2010 - 2018. All material presented in this publication is not necessarily the views of the American Radio Relay League (ARRL), BVARA, or members of the said organizations. If you would like to contact the editor of the eQRM, please email David at [kc3bxc.73@gmail.com](mailto:kc3bxc.73@gmail.com). Please visit us online at [www.W3SGJ.org](http://www.W3SGJ.org). To subscribe to our newsletter, please visit [W3SGJ.org/newsletter.php](http://W3SGJ.org/newsletter.php)

# Who We Are

## 2018 BVARA OFFICERS

President: Jack Spencer, KZ3Z

Vice President: Dan Grazulis, KB3VSP

2nd Vice Pres.: Doug Lawrence, K3GTX

Treasurer: Pam Spencer, W3PMS

Secretary: Norm Trunick, K3NJT

Director: Tony Pavilonis, W6PEF

Director: Bob Winkle, N3AZZ

Trustee: Rich Soltesz, K3SOM

## MONTHLY MEETINGS

E-Board meetings are now held the Saturday before the monthly club meeting.

VE testing begins at 5:00 PM.

Regular meetings are at 6:30 PM

All meetings are held at the  
Beaver County  
Emergency Services Center  
351 14th Street  
Ambridge, PA 15003  
on the second Thursday of every month  
(unless otherwise stated).

2018

Sep 13

Oct 11

Nov 08

Dec 08 Christmas Party 7 PM

2019

Jan 10

Feb 14

Mar 14





# This Month

## *This Month:*

### *Speakers:*

Rich Soltesz and Bob Winkle  
K3SOM            N3AZZ

### *Topic:*

Knots for Hams

### *Including:*

Continuing with our BVARA Presentation Series this year, our topic this month is a real-live knot tying presentation featuring our club expert: Bob, N3AZZ.

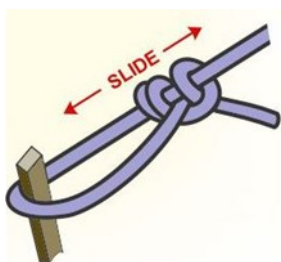
First, we'll look at the history of various types of rope and also knot tying. Without rope there would be little need for knot tying skills. We'll categorize each family of rope material giving an indication of strengths and weaknesses under a variety of conditions.

Next, Bob will focus on specific applications within ham radio that might require various kinds of knots. These might include guy wires, end support for various wire antennas, adjustable guy wires for tents, and other applications. What we've determined is that a small number of knots can handle the vast majority of our ham radio needs.

But wait, there's more! Your assignment, should you choose to accept it, is to willingly learn the skills required to tie these few knots using instructor-supplied rope materials and hands-on training. In a very short period of time, you will master these knots and be able to approach situations within ham radio with confidence and skills to 'Git-er-done!' quickly and easily. This is one presentation you won't want to miss!

### *Rich's Background:*

Extra Class Ham, Licensed since 1962, VE,  
B.S. Electrical Engineering,



# More this Month

## Weekly

The Freedom Square Diner in Monaca has a great wait staff. Come let them take your order.

Thursday Morning Breakfast  
(or you can have lunch)



The BVARA meets every Thursday at the Freedom Square Diner in Center Township, just to the right of the Cinemark Center Township Marketplace at 09:30 AM. All radio amateurs and those interested in amateur radio are encouraged to come join us at our Thursday morning breakfast.

## See you Thursday at



The eQRM urges all Beaver County licensed amateurs to participate in the County's RACES and ARES programs.

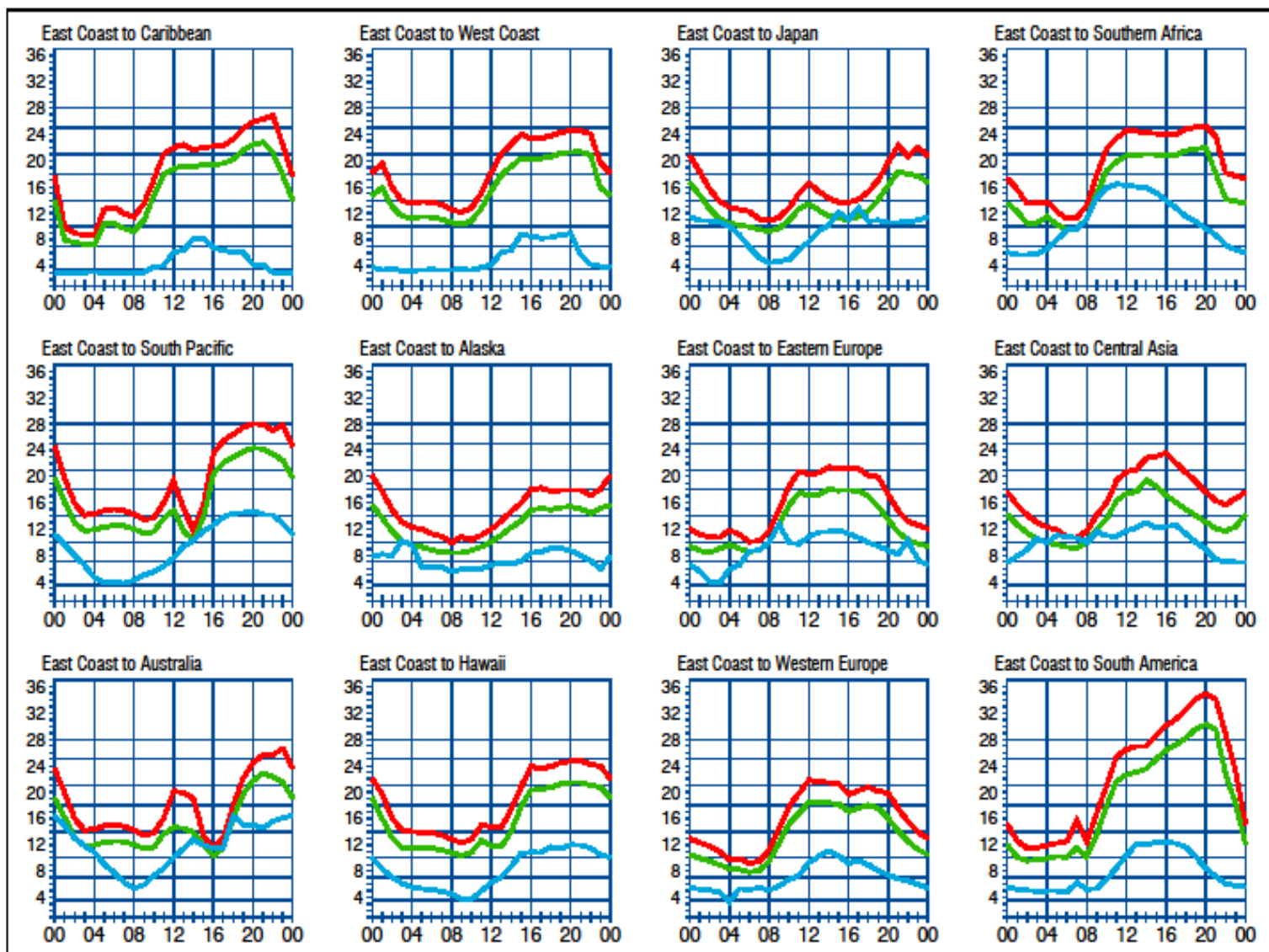
Any Beaver County Amateur that is interested in participating in the RACES/ARES programs can do so by checking into the Beaver County Public Service Net which meets every Monday evening at 8:30 PM local time on the N3TN 146.850 MHz repeater (131.8 PL)

### RACES / ARES

The eQRM Urges All County Hams to Participate.



# Propagation



**When are the bands open?** These charts, generated using CAPman, show probabilities for average HF propagation in the month of **September** for the paths indicated. The horizontal axes show Coordinated Universal Time (UTC), and the vertical axes frequency in MHz. On 10% of the days of this period, the highest frequencies propagated will be at least as high as the upper red curves (HPP, highest possible frequency) and on 50% of the days they will be at least as high as the green curves (MUF, classical maximum usable frequency). The blue curves show the lowest usable frequency (LUF) for a 1500-W CW transmitter. For SSB or a lower transmitter power, the LUF will be somewhat higher than the blue curves indicate. See Oct 1994 QST, pp 27-30, and Feb 1995 QST, pp 34-36, for more details. The predictions assume an observed 2800-MHz solar flux value of 69. This is a Very Low level of solar activity. See the detailed propagation tables on *The ARRL Antenna Book CD-ROM*.

## PROPAGATION

The East Coast propagation chart listed here is for September 2018.

If you would like more information in general, please visit <http://www.arrl.org/propagation>

# Get your License or Upgrade

If you are interested in getting your first FCC license or upgrading your current amateur radio license, the Beaver Valley Amateur Radio Association holds VE Test sessions (Volunteer Examinations) the second Thursday of each month at the Nine One One center in Ambridge Pennsylvania prior to our BVARA Club meeting. If there is no meeting there is no test session. Please come take your test with us!

For more information, contact :  
Rich Soltesz, K3SOM  
(724) 847-0610  
k3som@arrl.net



## VE TEST SESSIONS

Beaver County Emergency Services Center 351 14th Street Ambridge, PA 15003.  
Tests begin promptly at 5 pm on the same day as BVARA Club Meetings  
(the second Thursday of the month).  
All classes of amateur radio license tests are administered.

ALL candidates MUST bring ALL of the following:

1. 2 forms of I.D. - one MUST be a photo I.D.
2. A pencil AND a pen with blue or black ink.
3. The original AND a photocopy of any valid ham license.
4. The original AND a photocopy of any C.S.C.E.
5. The test fee of \$15 - cash, check, or money order.

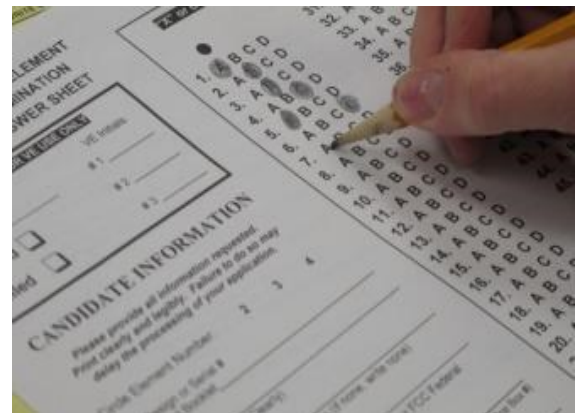
# New License and Upgrades

BVARA VE Testing



Here's the list of participants in our VE process this past month:

\*There was no testing because of the BVARA Corn Roast in August.





# Membership Information

By becoming a BVARA member you help secure the future of Amateur Radio in Beaver County. Additionally, the BVARA receives a portion of each ARRL

membership you purchase!

## Join the BVARA and ARRL

### Sign up for:

### Price

- |  |       |       |
|--|-------|-------|
| <input type="checkbox"/> BVARA full membership                   | 20.00 | _____ |
| <input type="checkbox"/> BVARA student membership                | 15.00 | _____ |
| <input type="checkbox"/> BVARA associate membership              | 10.00 | _____ |
| <input type="checkbox"/> BVARA Child under 21 at home membership | 5.00  | _____ |
| <input type="checkbox"/> One year ARRL membership                | 49.00 | _____ |

A Club Donation \_\_\_\_\_

ARRL Member?      Yes      No

Total    Enclosed    \_\_\_\_\_

### Your License Class (If you have one.)

- |                                      |               |
|--------------------------------------|---------------|
| <input type="checkbox"/> Technician  | Name _____    |
| <input type="checkbox"/> General     | Address _____ |
| <input type="checkbox"/> Advanced    | _____         |
| <input type="checkbox"/> Extra Class | Email _____   |

Phone \_\_\_\_\_

Your Call sign \_\_\_\_\_

Your Signature \_\_\_\_\_

Make check or money order payable to:

The Beaver Valley Amateur Radio Association, P.O. Box 424

South Heights, Pa 15081



**Radio, Computer, Electronics**

## **SwapFest**

**Sunday September 9, 2018**

**8 A.M. to 3 P.M.**



***Buy a ticket, and open your trunk!***

*Gate donation of \$5.00 per person. No additional charge for sellers.*

**Unionville Fire Department  
102 Mahood Road, Butler, PA 16001  
(Along PA Route 8, 4 miles north of US 422)**

**40° 56' 19" N, 79° 57' 34" W**

**No firearm sales! No alcoholic beverages permitted in SwapFest area!**

**FCC Amateur Radio Exams**

**PRIZES**

**(To be announced at a later date.)**

*Winner need not be present to win.*

**50/50 Raffles**

Prize tickets are available at the club's table.

Talk in W3UDX 147.36/96

Web Site: W3UDX.ORG

**Breakfast and lunch available.**

(No individual food sales permitted.)

**Information : Joe Sciulli, N3WHJoe@gmail.com 412-337-1687**

**Sponsored by : Butler County Amateur Radio Association , Inc.**

Bruce Draper, AA5B, aa5b.corral@gmail.com

## Contest Corral

## September 2018

Check for updates and a downloadable PDF version online at [www.arrl.org/contests](http://www.arrl.org/contests).

Start - Finish Date-Time	Finish Date-Time	Bands	Contest Name	Mode	Exchange	Sponsor's Website
1 0000 1 2359	1.8-28	CWOps CW Open	CW	Serial, name	<a href="http://www.cwoops.org">www.cwoops.org</a>	
1 0000 1 2359	3.5-28	Russian RITTY WW Contest	Dig	RST, 2-letter oblast or CQ zone	<a href="http://www.qrz.ru/contest/detail/93">www.qrz.ru/contest/detail/93</a>	
1 0000 2 2359	3.5-28	All Asian DX Contest, Phone	Ph	RS, 2-digit age	<a href="http://www.jar1.org/English">www.jar1.org/English</a>	
1 0600 1 0800	7, 14	Wake-Up! QRP Sprint	CW	RST, serial, suffix of previous QSO	<a href="http://qrp.ru/contest">qrp.ru/contest</a>	
1 1300 1 1600	7	AGCW Straight Key Party	CW	RST, serial, class, name, age	<a href="http://www.agcw.org">www.agcw.org</a>	
1 1300 2 0400	1.8-UHF	Colorado QSO Party	CW Ph Dig	Name, county or SPC	<a href="http://ppraa.org/cqcp">ppraa.org/cqcp</a>	
1 1300 2 1259	1.8-28	IARU Region 1 Field Day, SSB	Ph	RT, serial	<a href="http://www.darc.de">www.darc.de</a>	
1 1300 2 1300	3.5-28	RSGB SSB Field Day	Ph	RS, serial	<a href="http://www.rsgbc.org/hf">www.rsgbc.org/hf</a>	
1 1500 2 0300	1.8-28	Alabama QSO Party	CW Ph	RS(T), county or SPC	<a href="http://www.alabamagsoparty.org">www.alabamagsoparty.org</a>	
1 2000 2 2000	3.5	PODXS 070 Club Jay Hudak Memorial 80-Meter Sprint	Dig	RST, SPC	<a href="http://www.podxs070.com">www.podxs070.com</a>	
2 1000 2 1400	144	WAB 144 MHz QRP Phone	Ph	RS, serial, WAB square or country	<a href="http://wab.internip.net">wab.internip.net</a>	
2 1800 3 0300	1.8-UHF	Tennessee QSO Party	CW Ph Dig	RS(T), county or SPC	<a href="http://tnqp.org/rules">tnqp.org/rules</a>	
3 2300 4 0300	1.8-50	MI QRP Labor Day CW Sprint	CW	RST, SPC, mbr or power	<a href="http://www.miqrp.net/contest">www.miqrp.net/contest</a>	
4 0100 4 0300	3.5-28	ARS Spartan Sprint	CW	RST, SPC, power	<a href="http://arsqp.blogspot.com">arsqp.blogspot.com</a>	
6 1700 6 2100	28	NRAU 10-Meter Activity Contest	CW Ph Dig	RS(T), 6-char grid square	<a href="http://www.nrau.net">www.nrau.net</a>	
6 1900 6 2100	1.8-28	SKCC Sprint Europe	CW	RST, SPC, name, mbr or power	<a href="http://www.skccgroup.com">www.skccgroup.com</a>	
8 0000 8 2359	14	Kulikov Polyx Contest	CW	RST, KP* or serial	<a href="http://www.tularadio.ru/?pg=content&amp;ipc=rule-en">www.tularadio.ru/?pg=content&amp;ipc=rule-en</a>	
8 0000 9 2359	3.5-28	WAE DX Contest, SSB	Ph	RS, serial	<a href="http://www.darc.de">www.darc.de</a>	
8 1000 9 1000	1.8-28	SARL Field Day Contest	CW Ph Dig	RS(T), # of xmits, category, province	<a href="http://www.sarl.org.za">www.sarl.org.za</a>	
8 1200 9 2359	1.8-50	SKCC Weekend Sprintathon	CW	RST, SPC, name, mbr or "none"	<a href="http://www.skccgroup.com">www.skccgroup.com</a>	
8 1400 8 2200	3.5-28	Ohio State Parks on the Air	Ph	Park abbreviation or SPC	<a href="http://www.ospota.org">www.ospota.org</a>	
8 1500 9 0959	3.5-28	Russian Cup Digital Contest	Dig	Serial, 4-char grid square	<a href="http://qzr.ru/contest/detail/86.html">qzr.ru/contest/detail/86.html</a>	
8 1800 10 0300	50 and up	ARRL September VHF Contest	CW Ph Dig	4-char grid square	<a href="http://www.arl.org/september-vhf">www.arl.org/september-vhf</a>	
9 0000 9 0400	3.5-14	North American Sprint, CW	CW	Other's call, your call, serial, name, SPC	<a href="http://ncjweb.com">ncjweb.com</a>	
10 0000 10 0200	1.8-28	4 States QRP Group Second Sunday Sprint	CW Ph	RS(T), SPC, mbr or power	<a href="http://www.4sqrp.com">www.4sqrp.com</a>	
10 1900 10 2030	3.5	RSGB 80-Meter Autumn Series, SSB	Ph	Other's call, your call, serial, name	<a href="http://www.rsgbc.org/hf">www.rsgbc.org/hf</a>	
15 0000 16 2359	All (no WARC)	Collegiate QSO Party	CW Ph Dig	Call, Coll Univ Name (or None), Class	<a href="http://www.gatorradio.org/collegiate.html">www.gatorradio.org/collegiate.html</a>	
15 0600 16 2359	10 GHz to light	ARRL 10 GHz and Up Contest	CW Ph Dig	6-char Maidenhead locator	<a href="http://www.arl.org/10-ghz-up">www.arl.org/10-ghz-up</a>	
15 1000 16 1000	50-1296	SARL VHF/UHF Digital Contest	Dig	RST, 6-char grid locator	<a href="http://www.sarl.org.za">www.sarl.org.za</a>	
15 1200 16 1200	3.5-28	Scandinavian Activity Contest, CW	CW	RST, serial	<a href="http://www.sactest.net/blog/rules">www.sactest.net/blog/rules</a>	
15 1200 16 1200	1.8-28	All Africa International DX Contest	CW Ph Dig	RS(T), serial	<a href="http://www.sarl.org.za">www.sarl.org.za</a>	
15 1400 16 0200	All (no WARC)	Iowa QSO Party	CW Ph Dig	RS(T), county or SPC	<a href="http://www.w0yl.com/IQAP">www.w0yl.com/IQAP</a>	
15 1600 15 2200	1.8-28	QRP Afield	CW Ph Dig	RS(T), SPC, mbr or power	<a href="http://www.newenglandqrp.org">www.newenglandqrp.org</a>	
15 1600 15 2300	3.5-144	Wisconsin Parks on the Air	Ph	Park abbreviation or SPC	<a href="http://www.wipota.com">www.wipota.com</a>	
15 1600 16 2000	3.5-28	New Jersey QSO Party	CW Ph	RS(T), county or SPC	<a href="http://www.k2td-borcn.org/njqp">www.k2td-borcn.org/njqp</a>	
15 1600 16 2200	All (no WARC)	New Hampshire QSO Party	CW Dig Ph	RS(T), county or SPC	<a href="http://www.w1wqm.org/nhqp">www.w1wqm.org/nhqp</a>	
15 1600 16 2359	1.8-144	Washington State Salmon Run Field Hell Sprint	CW Ph Dig	RS(T), county or SPC	<a href="http://www.wdxc.org/salmonrun">www.wdxc.org/salmonrun</a>	
15 1800 15 1959	1.8-50	Feld Hell Sprint	Dig	RST, mbr, SPC, grid	<a href="http://sites.google.com/site/feldhellclub">sites.google.com/site/feldhellclub</a>	
16 0000 16 0400	3.5-14	North American Sprint, RITTY	Dig	Other's call, your call, serial, name, SPC	<a href="http://ncjweb.com">ncjweb.com</a>	
16 1700 16 2059	3.5-28	BARTG Sprint 75	Dig	Serial	<a href="http://bartg.org.uk">bartg.org.uk</a>	
17 0100 17 0300	1.8-28	Run for the Bacon QRP Contest	CW	RST, SPC, mbr or power	<a href="http://qrpcontest.com/pigrun">qrpcontest.com/pigrun</a>	
17 1900 17 2300	144	144 MHz Fall Sprint	CW Ph Dig	4-char grid square	<a href="http://svhfs.org">svhfs.org</a>	
19 1900 19 2030	3.5	RSGB 80-Meter Autumn Series, CW	CW	Other's call, your call, serial, name	<a href="http://www.rsgbc.org/hf">www.rsgbc.org/hf</a>	
20 0300 20 0230	3.5-14	NAQCC CW Sprint	CW	RST, SPC, mbr or power	<a href="http://naqcc.info">naqcc.info</a>	
21 2100 21 2359	3.5	AGB NEMIGA Contest	CW Ph Dig	RST, serial, mbr (if any)	<a href="http://www.ev5agb.com">www.ev5agb.com</a>	
22 0000 22 2359	1.8-VHF	FOC QSO Party	CW	RST, name, mbr (if any)	<a href="http://gffoc.org/qso-party">gffoc.org/qso-party</a>	
22 1200 23 1200	3.5-28	UKWEI DX Contest, SSB	Ph	RS, serial, district (if any), serial	<a href="http://www.ukweic.com">www.ukweic.com</a>	
22 1200 23 1200	1.8-28	Maine QSO Party	CW Ph	RS(T), county or SPC	<a href="http://www.w1sm.com">www.w1sm.com</a>	
22 1400 22 1800	144, 432	AGCW VHF/UHF Contest	CW	RST, serial, class, 6-char grid	<a href="http://www.agcw.org">www.agcw.org</a>	
23 1300 26 0800	1.8-144	Classic Exchange, CW	CW	Name, RST, SPC, rig manufacturer	<a href="http://www.classicexchange.org">www.classicexchange.org</a>	
25 1900 25 2300	222	220 MHz Fall Sprint	CW Ph Dig	4-char grid square	<a href="http://svhfs.org">svhfs.org</a>	
26 0000 26 0200	1.8-28	SKCC Sprint	CW	RST, SPC, name, mbr or power	<a href="http://www.skccgroup.com">www.skccgroup.com</a>	
27 1900 27 2030	3.5	RSGB 80-Meter Autumn Series, Data	Dig	Other's call, your call, serial, name	<a href="http://www.rsgbc.org/hf">www.rsgbc.org/hf</a>	
29 0000 29 2359	1.8-50	Feld Hell Sprint	Dig	RST, mbr, SPC, grid	<a href="http://sites.google.com/site/feldhellclub">sites.google.com/site/feldhellclub</a>	
29 0000 30 2359	2.3 GHz and up	ARRL EME Contest	CW Ph Dig	Signal report	<a href="http://www.arl.org/eme-contest">www.arl.org/eme-contest</a>	
29 0000 30 2359	3.5-28	CQ Worldwide DX Contest, RITTY	Dig	RST, CQ Zone, SP (if WVE)	<a href="http://www.cqwwdx.com">www.cqwwdx.com</a>	
29 1400 30 2000	All (no WARC)	Texas QSO Party	CW Ph Dig	RS(T), county or SPC	<a href="http://www.txqp.net">www.txqp.net</a>	
30 1300 3 0800	1.8-144	Classic Exchange, Phone	Ph	Name, RS, SPC, rig manufacturer	<a href="http://www.classicexchange.org">www.classicexchange.org</a>	

All dates refer to UTC and may be different from calendar dates in North America. No contest activity occurs on the 60-, 30-, 17-, and 12-meter bands. Mbr = Membership number. Serial = Sequential number of the contact. SPC = State, Province, DXCC Entity, XE = Mexican state. Listings in blue indicate contests sponsored by ARRL or NCJ. The latest time to make a valid contest QSO is the minute listed in the "Finish Time" column. Data for Contest Corral is maintained on the WA7BNM Contest Calendar at [www.contestcalendar.com](http://www.contestcalendar.com) and is extracted for publication in QST 2 months prior to the month of the contest. ARRL gratefully acknowledges the support of Bruce Horn, WA7BNM, in providing this service.

# Bits and Pieces

This month promises to be rather fun,

The BVARA has planning another Field Trip for our members. If you missed our previous Field Trips, here is your chance to step out of your 'comfort zone' this late Summer. Join us as we visit Check's Antique Radio Museum on **September 16th, 2018** beginning at **1:00 PM**. The collection is made up of roughly 1,500 radios from all 20th Century eras, there is much to see and learn about the history of radio development. The museum's curator, Mel Check, worked as an engineer for KDKA radio in Pittsburgh for forty years. All the while, Check was collecting radios and radio accessories and filling his Pittsburgh home with his ever expanding collection.



When he finally retired in 1998, he and his wife moved to a home in Karns City. His new home was so far from a major city that even getting a radio station was a challenge. However, this space allowed Check to begin building a museum for his large collection. He opened a year later in 1999, Check's Radio Museum occupies just one large room above their home's detached garage, there are many great radios filling the space.

Check's connection to KDKA has allowed him to display many items related to the station's history. There are also many signed items from local celebrities and sports figures that Check has met over the years, and a large pile of press passes from events over the years.

We'll be the only group attending so there is no reasonable limit to the number of people from our group in attendance. As we did with the WKBN tour, after the tour we are stopping at the Outlook Inn high above the Allegheny River at Brady's Bend for something to eat. If nature cooperates, the fall foliage may provide some beautiful vistas.

The deadline for your response is no later than Tuesday, September 11th, 2018 to [K3SOM@ARRL.net](mailto:K3SOM@ARRL.net) or (724) 847-0610. Once we have your commitment, we can then plan on departure times and possible carpool arrangements from the Chippewa area. From Chippewa, the drive will take approximately 90 minutes depending on construction and traffic. We plan to leave from the Chippewa area around 11:30 AM. If you have any questions, please contact Rich Soltesz directly so that he can provide any additional information or try to answer your specific questions or concerns. There is no cost for this Field Trip.

Special thanks to Jim Allen, KC3IXE for his help in contacting Mel Check, for suggesting this Field Trip for our BVARA Club, and for follow-up suggestions and information.

Please make plans to come you don't want to miss this great radio adventure!

Be courteous on the air, be safe and have fun with your hobby.  
Till next month, 73 KC3BXC.



# It's Your Dime

Remember back when you could communicate by "Pay Phone" for ten cents? This page is for anyone who wants to communicate with the BVARA community and beyond. Please send me your article that you would like posted on this page. Please, only topics and language in good taste. As the editor I reserve the option to post it or ignore it. Send your dime to me at: [kc3bxc.73@gmail.com](mailto:kc3bxc.73@gmail.com)



Here is an example of amateur radio connecting people by serving your community volunteering your radio service.

Doug, N4YKQ and his girlfriend, Celeste began dating in early May, 2015. She participates in the Susan G. Komen Race for the Cure 5k walk each year on Mother's Day. Doug went on to say... that year we had only started seeing each other a week or two earlier. As we got to know each other she found out I am a ham. She told me that Hams provided communications for the Race. I'm not sure that I even knew that amateur radio operators / Hams provided communications around the course.

The following year I saw a request in the Western Pennsylvania Association section e-mail newsletter for radio volunteers for the Race for the Cure. I e-mailed, Bob, NU3Q, and told him I was interested if he could use me. It didn't take long to get a reply and an assignment for race day. I was to report to the intersection of Murdoch and Bartlett at the "Radio 4" position. This gave Celeste and I something we could do "together". She would walk the course and I would provide safety and security communications via amateur radio on the race course from my assigned position.

On race day I dropped Celeste off near the Carnegie Museum which is walking distance to Schenley Park. I then continued to my assigned position. At Radio 4 I was the only ham operator, there was also a Pittsburgh school crossing guard and another race volunteer at the intersection. It was sunny and warm that day. I was doing my best to not get sunburned but I had only limited success! After the race was done I picked up Celeste, we then met several of the other volunteer hams for lunch at Penn Brewery. I didn't know any of the other hams as they were from other clubs, but I would run into some of them again at various ham-fests.

In May of 2017, I again volunteered to help at the Race for the Cure. This time I was assigned to shadow the person in charge of the registration tent. Celeste and I were able to park the car in the Carnegie Museum garage and walk to the main event area together. Again, I was the only ham assigned to my new position. I was told to stay in an out-of-the-way area near the back of tent and be available if my shadow needed something. The tent was nice since I didn't need to worry about getting sunburn. When everything was done I met Celeste, her daughter and son-in-law. He also participated in the walk and we all went to a family lunch.

Around March or April of 2018 I saw a post from Bob, NU3Q, on the WPA section Facebook page requesting volunteers for the Race for the Cure. I immediately e-mailed Bob and told him I would be available again.

# It's Your Dime

About a week before race day the assignments get e-mailed to all the hams who volunteer. This year I would be at the "Radio 7" position which is the start line for the 5k run. After the runners cleared the start line I was to move to West Circuit Road near the Westinghouse Memorial. I would also have a partner for the first time. My partner would be Mike, WA3PYU.

On race morning, Mother's Day, May 13, weather was not good. It was raining and there were some flashes of lightning on the drive to Pittsburgh. I was having second thoughts about being stuck out in a thunderstorm, but I wasn't going to back out now. Celeste and I made it to the Carnegie Museum parking garage and got the same spot we did last year. She is pretty understanding about the fact that I have to be in my position by 7am which means getting on the road quite early. It was still raining when we parked. We were a bit early, so we just sat in the car for a while.

Rain or no rain, I finally decided that I needed to start walking so I could get to my position on time. I didn't know exactly how to get there, but I had checked Google maps and the satellite view, I had a good idea of where to go. I got to my location and heard WA3PYU check in with net control advising that he was in the park and on the way to our area. I then checked into the net. I radioed that I was on location and found a bus shelter so I could get out of the rain for a while. A few minutes later, a gentleman sat down near me and introduced himself as Mike, WA3PYU (I guess the Icom hat I was wearing gave me away).

The race wasn't scheduled to start until 8:35am so Mike and I sat and talked a bit. Mike told me he was a retired electrical engineer. I told him that my dad had been an electrical engineer and had worked for Westinghouse and eventually retired from Eaton after they bought Westinghouse and, unfortunately, passed away at the end of 2017. Mike told me that he had worked for Eaton at Cherrington and I told him my dad had worked there, too. I asked Mike if he had known my dad, Dick Hanna. Mike told me that he had indeed, known my dad both through work and QCWA (the Quarter Century Wireless Association). We then sat and swapped stories about cars and radios. We reminisced about my dad until it was time to begin the race. By race time, the rain had ended, it also held off for the rest of the race.

After the race finished, Mike and I left to go back to our cars. I found myself awestruck how this hobby brought me to another person who had known my dad. I also thought how I went to use my hobby as a way to give something back to the community and ended up receiving an amazing gift.

This turned out to be a long story, it's kind of hard to tell it so it makes sense without getting long-winded.

73 de Doug, N4YKQ

# Silent Key items for Sale

In the following pages are pictures of ham equipment that the BVARA is selling for the family of a silent key, a deceased ham radio operator. He lived in Aliquippa, Pennsylvania. He passed away last year at the age of 93. In the photos are two boxes of parts and a power supply for a Heathkit HW-101 transceiver kit that was barely started to be put together. Three Heathkit manuals are also available, one of them is to be included with the HW-101 kit. Please make an offer to Jack Spencer at [KZ3ZJack@Verizon.net](mailto:KZ3ZJack@Verizon.net) for consideration. Jack Spencer, KZ3Z should be contacted for additional details before the end of September if any club member is interested. Please make an offer to Jack for consideration - no prices have been set as of yet.

After September, the remaining items will be offered on various Internet sites. Smaller items will probably be added to the inventory list as Jack begins to sort out the items for sale.

## Pictures of Equipment List:

- 01 Heathkit DX-100 AM\_CW Xmtr
- 02 ICOM IC-720A Xcvr Front
- 02a ICOM IC-720A Xcvr Back
- 02b ICOM IC-720A Xcvr Name Plate
- 03 Radio Shack HR-10 25W 10M Xcvr
- 04 Car Radio HF to BC Converter
- 05 Heathkit HW-101 Kit Box1
- 06 Heathkit HW-101 Kit Box2
- 07 Heathkit PS-23 Power Supply for HW-101
- 08 Allied A-2515A SWL Radio
- 09 Allied A-2515a SWL Radio Back
- 10 Bogen Challenger CHB 35 PA Amp
- 11 Hallicrafters SX-43 Rcvr
- 11a Hallicrafters SX-43 Inside
- 11b Hallicrafters SX-43 Back
- 12 Hallicrafters Matching Spkr Above SX-43

Original Heathkit Manuals for PS-23, HW-101, and DX-100 Items

# Silent Key items for Sale



01



02



02A



02B



03



04



# Silent Key items for Sale



05



06



07



08



09

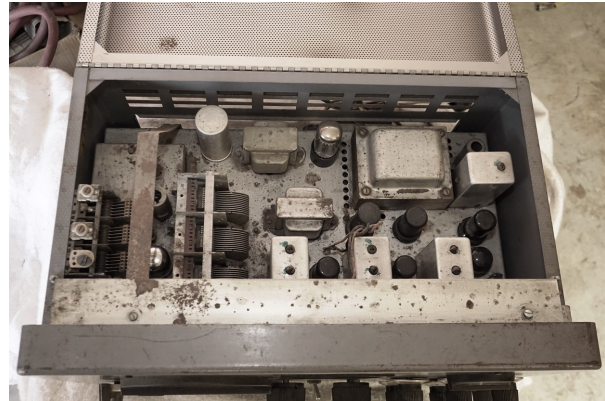


10

# Silent Key items for sale



11



11A



11B



12