



THE BEAVER VALLEY AMATEUR RADIO ASSOCIATION
WWW.W3SGJ.ORG
BEAVER COUNTYS ONLY 75 YEAR ARRL AFFILIATED CLUB!

The eQRM Newsletter

Home of W3SGJ/R
145.310- 100 Hz PL

Volume III, Issue 4
August 2009
Grant, KB3QFQ, Editor

BVARA CORN ROAST! August 8, 2009 at 5:00PM

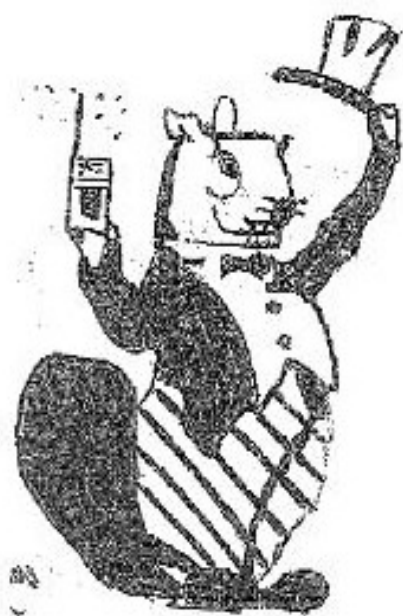
Volunteers are needed to come to the park at 3:00PM to shuck corn. Bags of ice accepted from corn roast participants. Covered dish dinners consists of appetizers, desserts, salads, vegetables, fruits, casseroles. BVARA will be providing corn, hot dogs and buns, condiments, ice tea, water, and coffee.

Please RSVP to Pamela Spencer, W3PMS, at 724 869 2429.

Hope to see you there!

Inside this issue:

Rossi Wireless Society	2
RACES	2
Field Day Pictures Article	3
Ham's Horoscope	4
Membership Info	5
QST Prop Charts	8
Hams Love to Eat!	9
Crossword Puzzle	11



For the first time in our history the ham radio population is showing negative growth, after decades of double digit increases, per total U.S population.

The average age of a ham in 1985 was 46. (FCC database)

The Scripps Newspaper Group stated that the average age of a ham radio operator was 60 in 2007. The Boston Globe estimated in 2008 that the average age of the 659000 licensed ham operators in the United States is in the 60s.

That's almost a linear progression of 1 year per year.

We better get some more licensed operators, or there won't be any hams in in 60 years. Bob DeMarco, WA3ZRM

Two Rivers ARC Meetings are held on the 3rd Tuesday of the month, except August and December, 8:00pm at McKeesport High School. Everyone is welcome.

Letters and Emails to the Editor

The eQRM welcomes letters/e-mails to the editor. Letters must be signed and contain your contact information for verification prior to publication. Preference will be given to letters of 200 words or less. Letters are subject to editing. Unused letters will not be acknowledged or returned.

The BVARA 10 Meter Net Lunch group will be meeting every Thursday at Kings in Center Twp at 11:00 AM. All area amateurs are invited and encouraged to attend the Thursday Morning Lunch.

VE TESTS are held by the W5YI VE Team at the American Red Cross in Brighton Township, Beaver, PA. IF YOU DESIRE TO TAKE A TEST, CONTACT DALE, KE3SV, FOR THE DATE OF THE NEXT TEST SESSION.

Report time is 6:15 sharp, to fill out 605 forms and check I.D. Testing begins at 6:45 PM. Information and registration on a test session can be obtained by calling VE Team Coordinator, Dale Neely, KE3SV after 6PM.

His address and phone number are as follows:

Dale R. Neely Jr., KE3SV

444 Center St.

Zelienople, Pa. 16063

Phone: 724-452-3247

2009 BVARA Officers & Directors

President: Jack Spencer, KZ3Z

First Vice President: Robert De Marco, WA3ZRM

Second Vice President: Evan Finkelstein, KB3QFR

Secretary: Norm Trunick, K3NJT

Treasurer: Pam Spencer, W3PMS

Director: George Caffro, N3HOJ

Director: Chris Moratis, W3OUF

Trustee: Dick Hanna, K3VVY



ROSSI WINERY WIRELESS SOCIETY



All area Amateur Radio Operators are invited to attend the weekly meeting of the Rossi Winery Wireless Society. The Society meets every Saturday evening at the Winery located in beautiful West Aliquippa. The meeting begins at 6:30 PM with a traditional vino toast followed by homemade Italian foods! The Winery is located on Main Avenue in the heart of West Aliquippa's Cultural & Historic District. Talk-in is on the ,31 repeater.



RACES & ARES

eQRM Urges ALL Beaver County Amateurs to Participate



As a matter of editorial opinion, the eQRM urges all Beaver County licensed amateur's to participate in the County's RACES and ARES programs.

Any Beaver County Amateur that is interested in participating in the RACES/ARES programs can do so by checking into the Beaver County Public Service Net which meets every Monday evening at 8:30 PM local time on the N3TN 146.850 MHz repeater (88.5 PL).

SPECIAL FIELD DAY 2009 ISSUE!

Photographs by Rich, K3SOM



Bob, WA3ZRM, at Shelter 12



George, N3HOJ, at Shelter 12

THE HAM'S HOROSCOPE

BY MADAM ZELDA, S T IARS

That's Gold	I'm Happy	Can't Complain	Not Happy	Turn Down the Heat

Sign	Romance	Home & Family	Finances	Career	General
Aries					
Taurus					
Gemini					
Cancer					
Leo					
Virgo					
Libra					
Scorpio					
Sagittarius					
Capricorn					
Aquarius					
Pisces					

FIELD DAY PHOTOS

Continued from page 3



The new Shelter 12



STUDY GUIDES TO BE USED IN UPCOMING BVARA LICENSE CLASSES

**BY BECOMING A MEMBER OF THE BVARA, YOU CAN HELP
SECURE THE FUTURE OF AMATEUR RADIO IN BEAVER COUNTY.
ADDITIONALLY, THE BVARA RECEIVES A PORTION OF EACH
ARRL AND/OR WORLD RADIO SUBSCRIPTION YOU PURCHASE!**

Join the BVARA, ARRL and World Radio

Sign up for:	Price	Quantity
<input type="checkbox"/> BVARA FULL MEMBERSHIP	20.00	
<input type="checkbox"/> BVARA STUDENT MEMBERSHIP	15.00	
<input type="checkbox"/> BVARA ASSOCIATE MEMBERSHIP	10.00	
<input type="checkbox"/> BVARA SPOUSE/CHILD MEMBERSHIP	5.00	
<input type="checkbox"/> ONE YEAR ARRL MEMBERSHIP	39.00	
Subtotal:		_____
ARRL MEMBER ? YES NO	Donation	_____
	Total:	_____
Your License Class (if any):		
<input type="checkbox"/> Novice	Name _____	
<input type="checkbox"/> Technician	Address _____	
<input type="checkbox"/> General	_____	
<input type="checkbox"/> Advanced	_____	
<input type="checkbox"/> Extra	Phone _____	
Your Call Sign: _____		Exp. date _____
Signature _____		

Make Check or Money order payable to:
The Beaver Valley Amateur Radio Association, P.O. Box 424
South Heights, PA 15081

A BIG THANK YOU!

**To the family of Donald McMurdy, WB3AIF
for the donation of the IC-765 and Drake TR-4C
and to
George, NN3J for the donation of the Yaesu FT101ZD**

Technician Class—***The No-Nonsense, No-Code Technician Class License Study Guide*** is based on a method developed by Bruce W8BBS. What he did for the earlier question pool is to rephrase each question in the form of a statement and then organize the statements to make them readable. Bruce was unable to update his manual for the question pool that went into effect in July 2006, so he gave us permission to do it.

General Class—***The No-Nonsense, General Class License Study Guide***. This is the study guide for those taking the General Class license exam after July 1, 2007. It follows the same format as the Technician Class Study Guide. Note, though, that there are more questions in this pool, and in general, the questions are more technical than the Tech Class, so be prepared to study longer and harder than you did for the Tech test. Visit: <http://kb6nu.com/techmanual> for more info on these guides.

FIELD DAY PHOTOS

Continued from page 4



K3SOM's site



George, Jack, and Chris

FIELD DAY PHOTOS

Continued from page 6

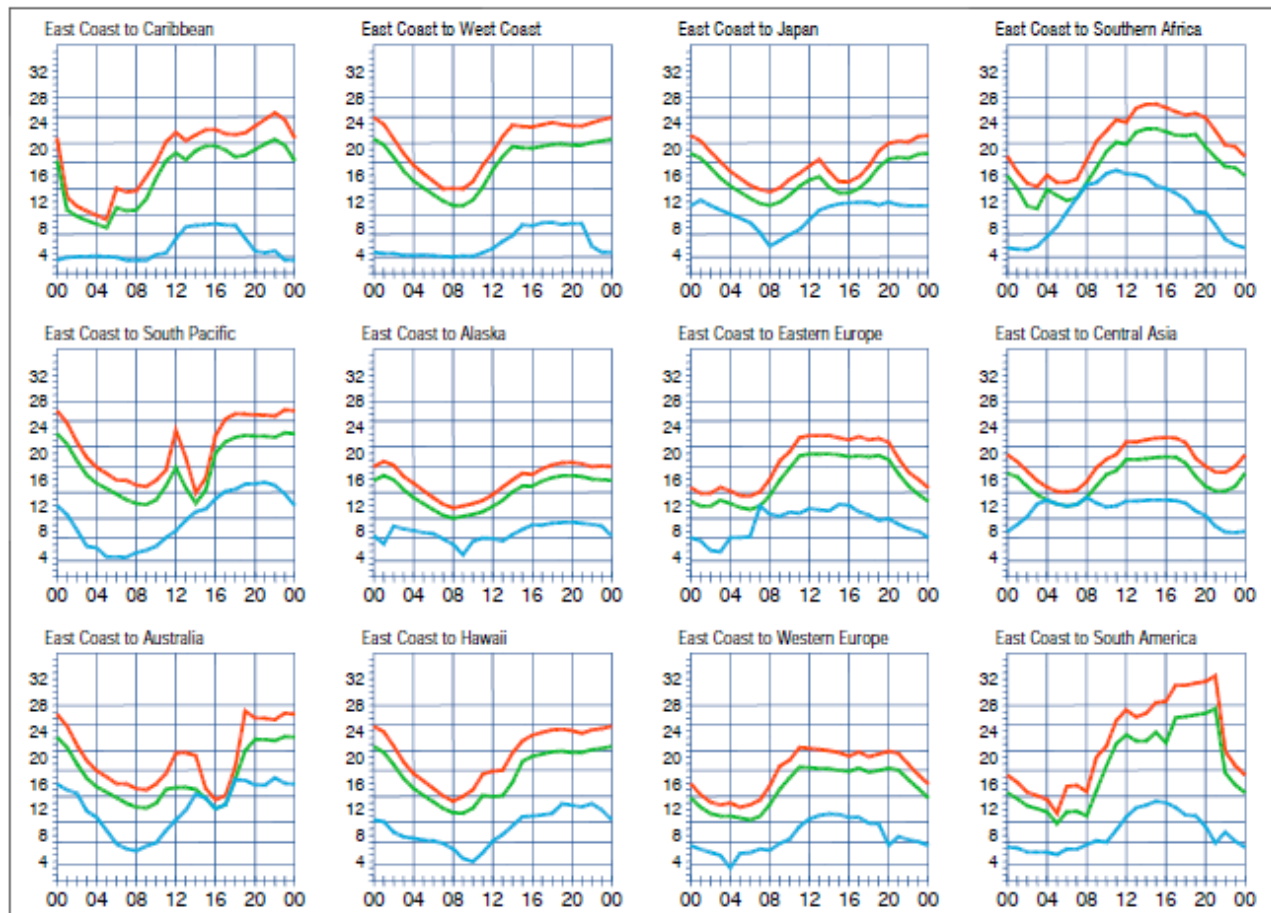


The SUPER ANTENNA!



Scouts warming themselves by the fire

QST Propagation Charts



When are the bands open? These charts, generated using CAPman, show probabilities for average HF propagation in the month of August 2009 for the paths indicated. The horizontal axes show Coordinated Universal Time (UTC), and the vertical axes frequency in MHz. On 10% of the days of this period, the highest frequencies propagated will be at least as high as the upper red curves (HPF, highest possible frequency) and on 50% of the days they will be at least as high as the green curves (MUF, classical maximum usable frequency). The blue curves show the lowest usable frequency (LUF) for a 1500-W CW transmitter. For SSB or a lower transmitter power, the LUF will be somewhat higher than the blue curves indicate. See Oct 1994 QST, pp 27-30, and Feb 1995 QST, pp 34-35, for more details. The predictions assume an observed 2800-MHz solar flux value of 92. This is a Low level of solar activity. See the detailed propagation tables on The ARRL Antenna Book CD-ROM.

The above chart is for the month of August.

FOR INFORMATION ON HOW TO READ THESE CHARTS,
[**CLICK HERE**](#)

W3SGJ
 Beaver Valley Amateur Radio Association
 P.O. Box 424
 South Heights, PA 15081, USA
 ITU 8, CQ 5, Grid EN90ur, Beaver County

HAMS LOVE TO EAT!

Recipe of the Month: Caramel Apple Dip

Ingredients

1 package (8 oz/227 g) cream cheese, softened

1/4 to 1/3 cup/60 to 80 mL brown sugar

1 tsp/5 mL Original Double-Strength Vanilla

1/2 tsp/2.5 mL Caramel Extract

Apples or pears, cored and sliced

Cooking Directions

Blend first four ingredients using electric mixer. Use as a dip for apple slices.

Makes 1 cup/250 mL.



This recipe is brought to you by Watkins
watkinsonline.com/w3sgj



Just think of all the products you currently use that can be replaced with Watkins products. By switching to Watkins' superior quality and value, you'll be **saving money** on your monthly essentials and **supporting your favorite organization**.

The BVARA receives 16 to 35% of ALL SALES MADE THROUGH THIS SITE!

If you buy flavorings, spices, salt, cooking oil, soup, desserts, dip mixes, moisturizers, lip balms, room fresheners, glass cleaners, cough medicines, dietary supplements, laundry detergents, or anything similar, head over to www.watkinsonline.com/w3sgj and make the switch to Watkins today!

FIELD DAY PHOTOS

Continued from page 7



ARRL FIELD DAY 2009



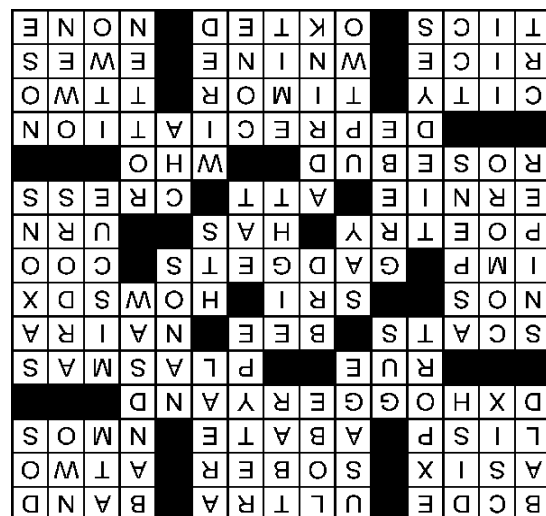
K3SOM and his amazing antenna! (left)

I would like to congratulate K3SOM for the contacts he made at Field Day! Over the weekend, he made over 140 contacts!

Again, I would like to thank everyone that attended the BVARA Field Day 2009!

ANNOUNCEMENT

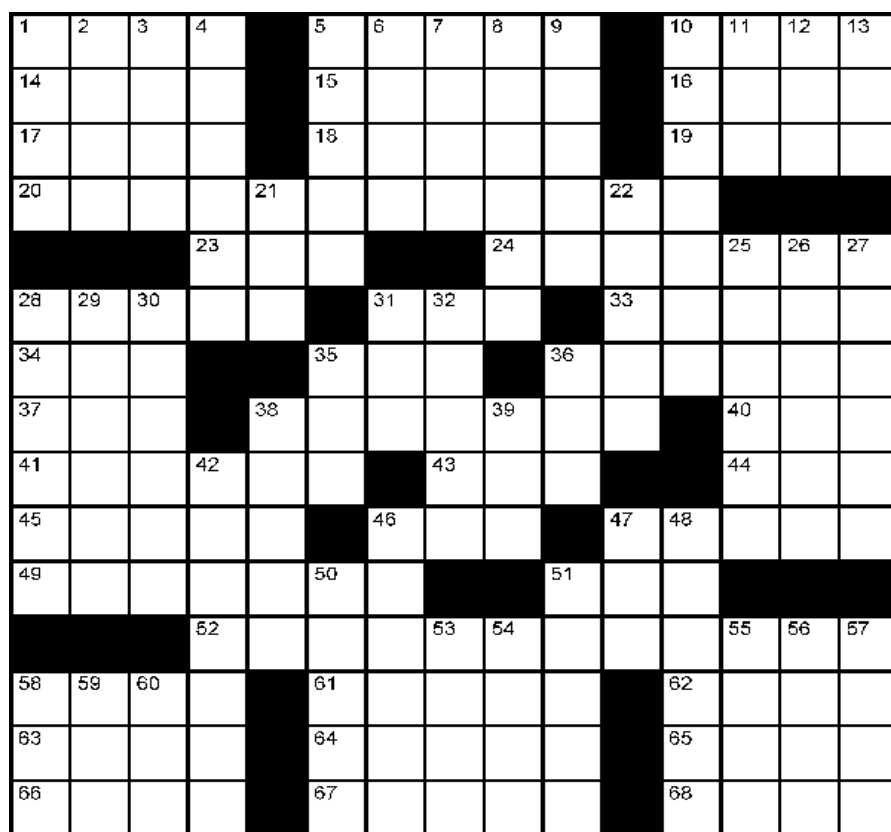
Technician License classes will be taught this fall at the Baden American Legion by Jack Spencer, KZ3Z. IF YOU WOULD LIKE TO ATTEND, or just want more information, PLEASE contact either KZ3Z or WA3ZRM on the 145.310 repeater! Anyone is welcome!



CROSSWORD PUZZLE - "HAM HUMOR #1"

Humor has always played a central role in QST from its beginning. This puzzle spans an instance of it from the 1940's to the 1970's.

from the [ARRL Website](#)



Down

1. Unadorned
2. Nassau prefix
3. EME antenna
4. IC-7800, say, in JA
5. Grammar topic
6. Radiation pattern feature
7. Ski lift
8. Respond again, on RTTY, say
9. "He's ___ nowhere man"
10. Tool for reducing spectrum width?
11. 20's dispenser
12. JA transceiver maker middle
13. Don'ts partner
21. Famous DXpeditioner, when 31 down wrote 36 across, familiarly
22. Trillions of zeptos
25. Goof
26. Passions
27. 5th century G-land settlers
28. Last second on-line bidder
29. D6 place
30. Poplars, in W0, say
31. Callsign suffix of one time 36 across writer and creator of 20 across.
32. Zero zulu in two-land June
35. Articulate
36. Very popular examples of 38 across
38. Early radio maker
39. Fast no more
42. Decorates 60's-style
46. "...like taking _____ from a fire hose." (information overload)
47. Half a Latin dance
48. T.O.M.'s series of articles
50. Where the DX might be listening
51. Kit alternative
53. Radiate
54. UHF antenna type, with dis-
55. Prefix in Lombardia
56. First astronaut ham, familiarly
57. Well known DXer KH6IJ when 31 down ran 36 across
58. Disp. device before LCD, LED
59. Early first century year
60. Inter-area NTS org

Across

1. Four after A
5. High frequency prefix
10. Two is one
14. Dubai designator
15. Best condition for contesting, or tower climbing, say
16. ZS neighbor's prefix
17. AI language
18. Diminish
19. FET type
20. With 41 and 52 across, society highlighted in 36 across and founded by 31 down
23. VE2 way
24. They make some displays play
28. Skedaddles
31. Buzzer (non-RF)
33. 5N dough
34. Mint alt., on eBay, e.g.
35. "Excuse me", low in the band
36. QST department
37. React. plus res.
38. Hams love them
40. Bird word
41. See 20 across
43. Owns
44. Coffee maker
45. "Sesame Street" regular
46. Cut 100
47. Salad green
49. Kane's word
51. "QRZ?"
52. See 20 across
58. N.Y.C. Part
61. 4W, was CR8 during the time of 31 down writing 36 across
62. Tuvalu
63. Houston university
64. 31 down's prefix
65. She sheep
66. Rotating rings for towers
67. "Yes, Sen. Kennedy", familiarly
68. Zero