

[illegible]

THE WORLD RADIO CONFERENCE WANTS YOUR COMMENTS.

THE eQRM

FEBRUARY 2013



5 COMMENT DEADLINE FOR WORLD RADIO CONFERENCE PROCEEDINGS

Let your voice be heard regarding new amateur radio band allocations

THIS MONTH

3

Bulletins

Hamfests and general announcements

4

The Month Ahead

Contests, VE testing, and Presentation Series

6

Equipment for Sale

A variety of used ham equipment for sale, while it lasts!

7

Propagation Charts

Propagation charts for the East Coast

8

Who We Are

Membership information, club officers, and meetings

9

Next Month

Get a preview of next month's story

CHECK INTO THE NETS

Wednesday 2 Meter
8:30PM on 145.310 MHz

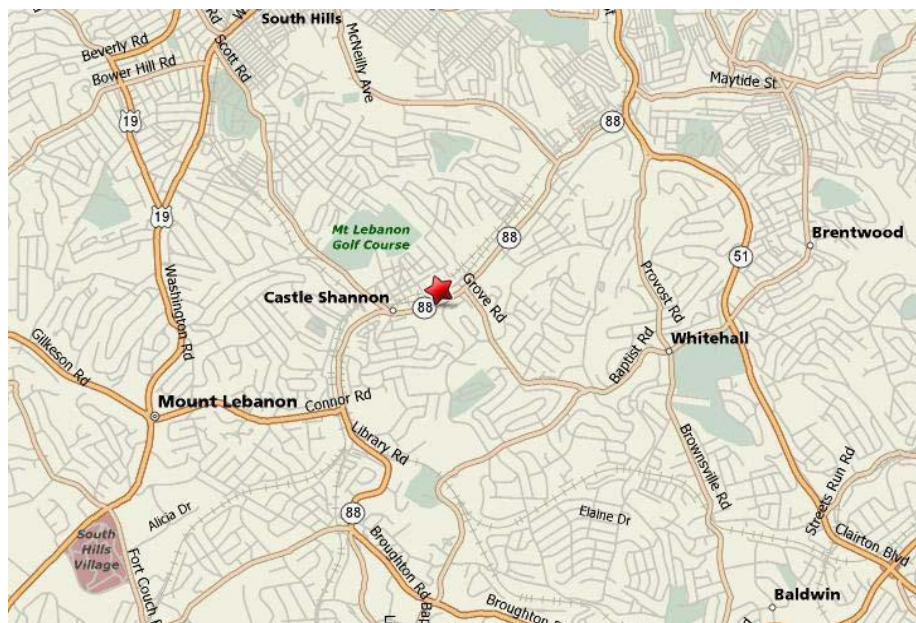
Wednesday 10 Meter
9:00PM on 28.470 MHz

Bulletins

HAMFESTS / ANNOUNCEMENTS / CLUB NEWS

Hamfest/ WASHFest 2013

Sunday, February 24, 2013. 8AM - 3PM



The Facts:

Date:

Sunday, February 24th , 2013

Time:

8:00 AM - 3:00 PM

Rain or Shine (or even Snow!)

Location:

Castle Shannon VFD Memorial Hall
3600 Library Road (SR 88)
Castle Shannon, PA

Talk-In:

146.955(-) and 443.650(+) 131.8 PL

Admission:

\$5.00

Sponsored By:

Wireless Association of South Hills
www.n3sh.org

DXCC Card Checking:

Thanks to WPA Card Checker Art
Lund, NQ3A

Free Coffee:

For the entire hamfest courtesy of
Ham Radio Insurance Associates
of Canonsburg , PA

More Information:

Carol Danko KB3GMN
Phone: (412) 884-1466
Email: n3sbf@comcast.net

Main Prizes:

1st Prize: Yaesu FT-897DD

2nd Prize: Kenwood TM-V71A

3rd Prize: LDG AT-200 Pro Tuner

4th Prize: Clear Speech Speaker

Additional Hourly Door Prizes!

Special Black Box Prize (Separate Drawing)

Main Prize tickets are \$2.00 each, or 3 for \$5.00. 7 for \$10 & 15 for \$20.

All prizes subject to last-minute changes.

The Month Ahead

Contest Information, VE Testing and Presentation Series

CONTEST



ARRL DX Contest
Feb. 16-17, 2013 (CW)
Mar. 2-3, 2013 (SSB)

OBJECTIVE: W/VE amateurs work as many DX stations in as many DXCC entities as possible on the 160, 80, 40, 20, 15, and 10 meter bands.

BANDS: 160, 80, 40, 20, 15, and 10 Meters. No contest QSOs may be made on 12, 17, 30 or 60 Meters.

Contest Period: 48 hours each mode (separate contests). Starts 0000 UTC Saturday; ends 2359 UTC Sunday.

Log Submission: Entries for the CW competition must be emailed or postmarked by 2359 UTC Tuesday, March 19, 2013, entries for the Phone competition by 2359 UTC Tuesday, April 2, 2013.

For more information on this contest, detailed rules, and log submission addresses, please visit www.arrl.org/arrl-dx

VE TEST SESSION

The next test session will be at the Beaver County Emergency Operations Center
351 14th Street
Ambridge, PA 15003

Time: 5:00 P.M.
(walk-ins allowed)

Date: Thursday, Feb. 14

All candidates wishing to take the test should bring ALL of the following:

1. Two (2) forms of identification. One should be a Photo ID.
2. A pencil and a blue or black pen.
3. Your original AND a photocopy of your current license (if any).
4. Your original AND a photocopy of any C.S.C.E's (if any).
5. The test fee of \$15.00.

All classes of amateur radio license tests will be administered.

Note: No question pool updates or releases will take place in 2013.

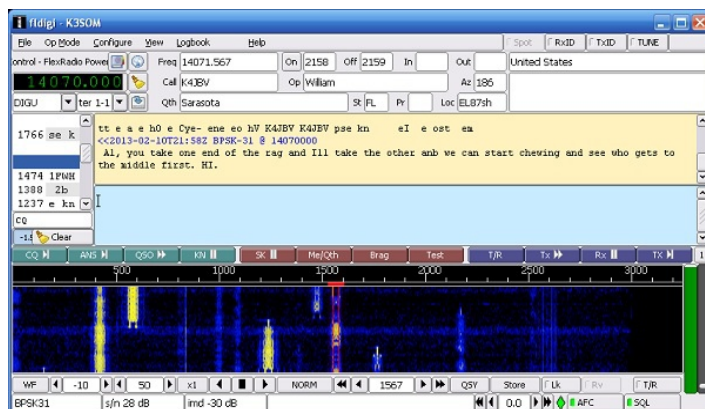
For more information, please contact our VE Test Coordinator:

Chris Moratis, W3OUF
1199 Highland Avenue
Ambridge, PA 15003
PHONE: 724-266-2866
cjmoratis@verizon.net

MONTHLY

Presentation Series

The BVARA Presentation Series provides a vast array of topics and discussions, with a new topic every month at our club meetings.



February 14, 2013 @ 6:30PM

At Beaver County 911 Center, 351 14th Street, Ambridge PA

Speaker: Rich Soltesz, K3SOM

Topic: General Logging of Contacts

Including: Continuing with our BVARA Presentation Series this year, this month's topic addresses: dealing with the exploding problem of logging contacts. With so many different modes of operation and with many specialized contest logging programs, we'll look at a generalized logging program that combines all of these "one-off" software logs. Once we have completed a few steps you will be amazed at how easy it is!

Rich's Background: Extra Class Ham, licensed since 1962; Volunteer Examiner (VE); B.S. Electrical Engineering

WEEKLY

Thursday Morning Breakfast

The BVARA meets every Thursday at Steak n Shake in Center Township at 10:30 AM.

All area amateurs are invited and encouraged to attend the Thursday Morning Breakfast.

See you at Steak n Shake!



COMMENT DEADLINE FOR WORLD RADIO CONFERENCE PROCEEDINGS

From the ARRL

The FCC has proposed to amend its rules to implement the allocation decisions of the 2007 World Radiocommunication Conference (WRC-07) and to make certain other changes. Notice appeared in the December 27, 2012 issue of the Federal Register, which started the clock on a 60-day window for the submission of comments. Thus, comments are due no later than February 25, 2013, with reply comments due no later than March 27, 2013.

While most of the 130-page Notice of Proposed Rulemaking and Order does not directly affect the Amateur and Amateur-Satellite Services, two sections of the document are of particular interest to amateurs.

Specifically, the FCC proposes to upgrade the Amateur Service allocation in the upper half of the 160 meter band (1900-2000 kHz) from secondary to primary, while deleting the existing allocation to the Radiolocation Service. This is possible, because the reaccommodation of radiolocation stations displaced by the expansion of the AM broadcasting band to 1705 kHz

has been completed and there are no non-federal radiolocation stations licensed to operate in the 1900-2000 kHz band.

The FCC also seeks comments on whether, and how, an amateur low frequency (LF) allocation might be able to co-exist with Power Line Carrier (PLC) systems that are used by electric utilities to monitor and control the power grid. The Commission notes that while PLC systems do not have the status of an allocation, they carry “communications important to the reliability and security of electric service to the public.” WRC-07 created a new secondary allocation to the amateur service at 135.7-137.8 kHz that already has been implemented in a number of other countries.

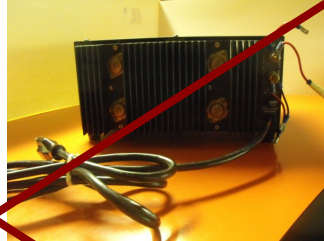
The ARRL will be preparing comments supporting both of these allocations. Individuals wishing to comment directly to the FCC should carefully read paragraphs 13-24 of the NPRM and follow the instructions contained in paragraph 175. ➔

Equipment for Sale



Astron RS-35M Power Supply
25 amp cont. 35 amp surge 13.8vdc.
\$100.00 plus S+H.

SOLD



Ritz Electronics Power Supply
PS-1001MR regulated.
13.8 vdc, 8amps, 115vac input.
\$25.00 plus S&H.

SOLD



Palomar TX75 Amplifier.
\$35.00 plus S&H.



American Electronics
SWR/Watt Meter, Model
95/134. 52 Ohms, 100 W
\$20.00 plus S&H.

SOLD

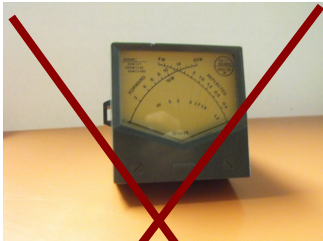


Dentron Ant Tuner AT-1K
with manual, 160meters-
10 meters, 500 watts
\$75.00 plus S&H.

SOLD



Ramsey Electronics PA-1
2 Meter Amplifier,
20W out with 4W in
\$30.00 plus S&H.



Daiwa SWR Model CN-
520, 1.8-60mhz, 50
ohms, 2KW. (with
manual)
\$50.00 plus S&H.

SOLD



Daiwa SWR Model CN-
550, 1.40-250 mhz, 50
ohms, 200 W, (with
manual)
\$40.00 plus S&H.

SOLD



Trionyx TR-1000, 600
mhz Frequency Counter.
(with manual).
\$40.00 plus S&H.

SOLD



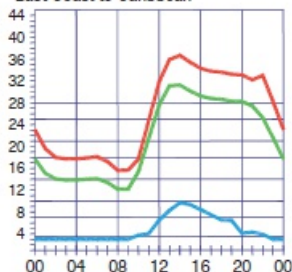
2 Turner Model +3B
microphones. \$15.00
each plus S&H.

If you are interested in buying an item, please call [Chris, W3OUF](tel:724-266-2866) at 724-266-2866

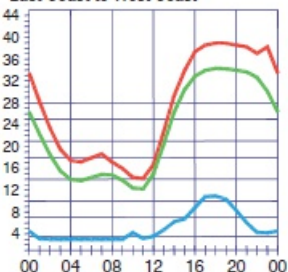
Propagation Charts

From the ARRL

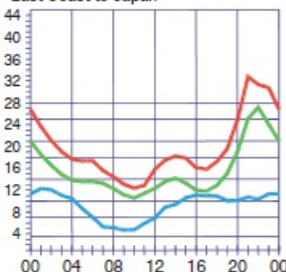
East Coast to Caribbean



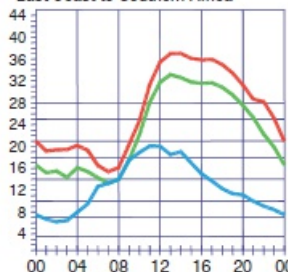
East Coast to West Coast



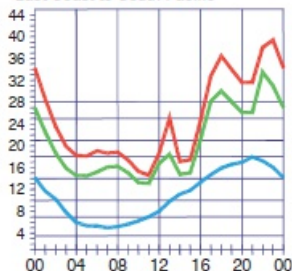
East Coast to Japan



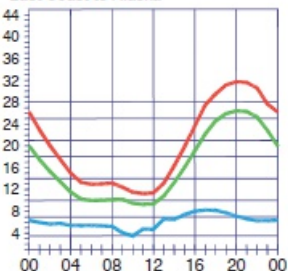
East Coast to Southern Africa



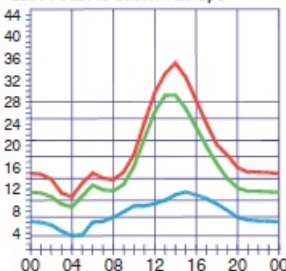
East Coast to South Pacific



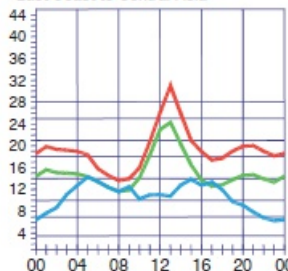
East Coast to Alaska



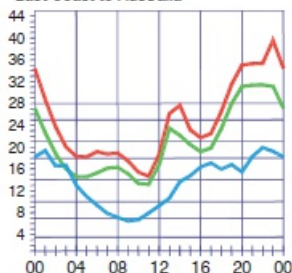
East Coast to Eastern Europe



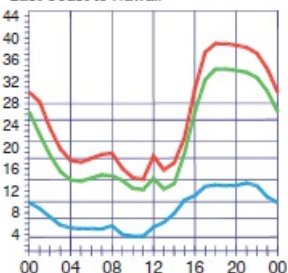
East Coast to Central Asia



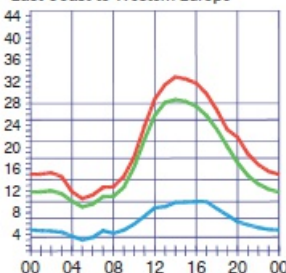
East Coast to Australia



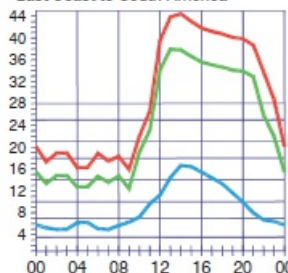
East Coast to Hawaii



East Coast to Western Europe



East Coast to South America



RACES / ARES

eQRM Urges All County Hams to Participate

As a matter of editorial opinion, the eQRM urges all Beaver County licensed amateurs to participate in the County's RACES and ARES programs. Any Beaver County Amateur that is interested in participating in the RACES/ARES programs can do so by checking into the Beaver County Public Service Net which meets every Monday evening at 8:30 PM local time on the N3TN 146.850 MHz repeater (131.8 PL)

PROPAGATION

The propagation chart listed above is for February 2013.

If you would like more information on how to read these charts, or for more information on propagation in general, please visit <http://arrl.org/propagation>



Who We Are

Membership Information and Club Officers

BY BECOMING A MEMBER OF THE BVARA, YOU CAN HELP SECURE THE FUTURE OF AMATEUR RADIO IN BEAVER COUNTY. ADDITIONALLY, THE BVARA RECEIVES A PORTION OF EACH ARRL AND/OR WORLD RADIO SUBSCRIPTION YOU PURCHASE!

Join the BVARA, ARRL and World Radio

Sign up for:	Price	Quantity
<input type="checkbox"/> BVARA FULL MEMBERSHIP	20.00	
<input type="checkbox"/> BVARA STUDENT MEMBERSHIP	15.00	
<input type="checkbox"/> BVARA ASSOCIATE MEMBERSHIP	10.00	
<input type="checkbox"/> CHILD UNDER 21 IN HOME	5.00	
<input type="checkbox"/> ONE YEAR ARRL MEMBERSHIP	39.00	

ARRL MEMBER? YES NO Subtotal: _____
Donation: _____
Total: _____

Your License Class (if any):

☐ Novice Name: _____
☐ Technician Address: _____
☐ General _____
☐ Advanced Email Address: _____
☐ Extra Phone: _____

Your Call Sign: _____ Exp. date: _____

Signature _____

Make Check or Money order payable to:
The Beaver Valley Amateur Radio Association, P.O. Box 424
South Heights, PA 15081

2013 BVARA OFFICERS

President: Jack Spencer, KZ3Z
Vice President: Jeff Waite, K3SLK
Second Vice Pres.: Mark Kavic, KB3LED
Treasurer: Pam Spencer, W3PMS
Secretary: Norm Trunick, K3NJT
Director: Adam Horniak, KG3L
Director: Denny Herbuth, KR3DX
Trustee: Rich Soltesz, K3SOM

MONTHLY MEETINGS

E-Board meetings are now held the Saturday before the monthly club meeting.
VE testing begins at 5:00.
Regular meetings are at 6:30.

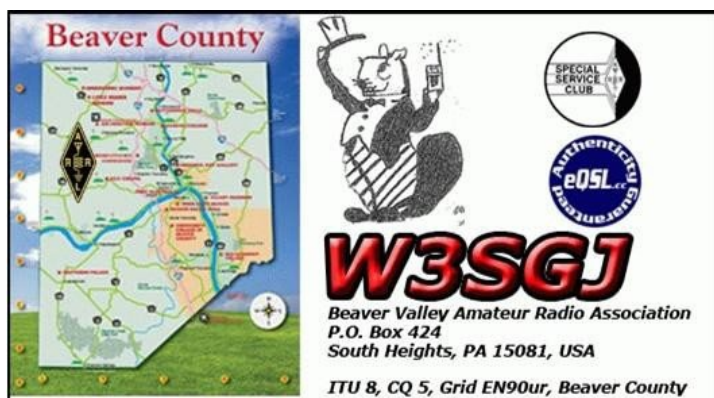
All meetings are held at
Beaver County
Emergency Operations Center
351 14th Street
Ambridge, PA 15003
on the second Thursday of every month (unless otherwise stated).

MEETING DATES

2013
February 14
March 14
April 11
May 9
June 13
July 11
August - **No meeting (Corn Roast, Date TBA)**
September 12
October 10
November 14
December 7 - **BVARA Christmas Party**

2014
January 9
February 13

QSL CARD



NEXT MONTH

MARCH 2013

THE BVARA'S 90TH ANNIVERSARY

AND DETAILS ON OUR APRIL SPECIAL EVENT
CELEBRATION