

# THE eQRM

JUNE 2014



Field Day is this coming weekend!  
Operators are needed, especially overnight!  
Come out to Old Economy Park and enjoy yourself!

---

## THIS MONTH

**Bulletins**  
Hamfests and general  
announcements

**The Month Ahead**  
Contests, VE testing, and  
Presentation Series

---

**Propagation Charts**  
Propagation charts for  
the East Coast

**Who We Are**  
Membership information,  
club officers, and meetings

---

## CHECK IN TO THE NETS

Wednesday 2 Meter  
8:30PM on 145.310 MHz

Wednesday 10 Meter  
9:00PM on 28.470 MHz

# Bulletins

HAMFESTS / ANNOUNCEMENTS / CLUB NEWS

## FIELD DAY !

### The Facts:

#### FIELD DAY 2014

Friday, June 27th

Dinner and preliminary set-up

Saturday, June 28th

Set-up in the morning

Field Day starts at 1800UTC

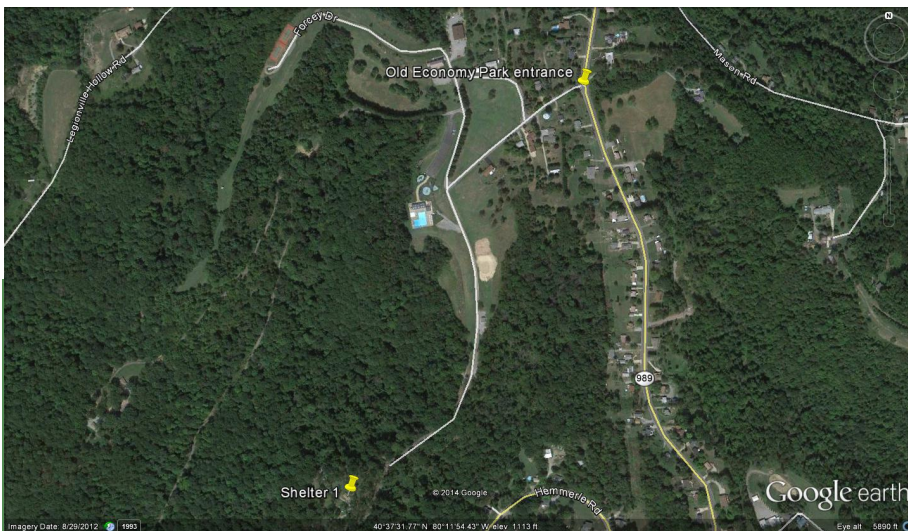
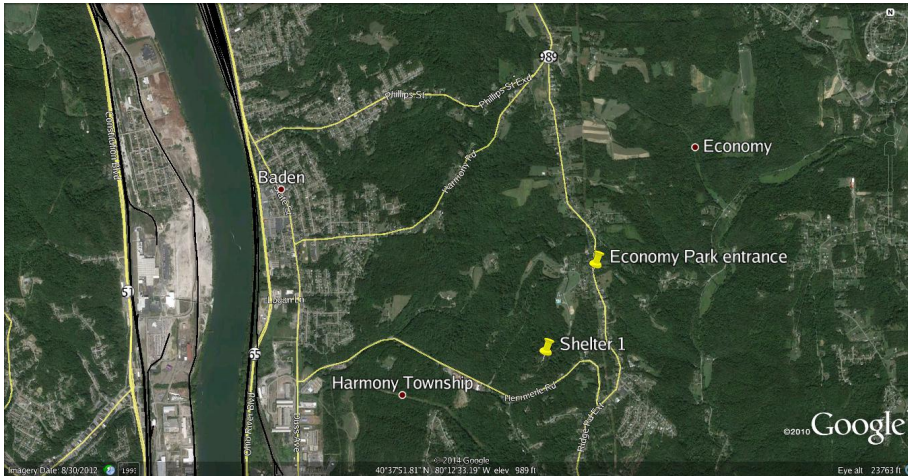
1400 local time

Sunday June 29th

Field Day ends at 2100UTC

1700 local time

Location: Old Economy Park  
PA Route 989, Economy Boro  
on the hill above Ambridge  
Turn off of 989 at the water  
tower onto Forcey Drive,  
proceed to the "T" intersection  
and make a left turn, continue  
to Shelter 1 at the end of the  
road.



Come out and operate and enjoy working other field day stations and having an "eyeball" QSO with local hams ! We need CW and phone operators to man 4 stations continuously from 2PM Saturday until 5PM Sunday. You can operate as much or as little as you prefer, but we would like to be able to have all stations manned from the beginning of the event until the end.



# The Month Ahead

Contest Information, VE Testing and Presentation Series

## ANNOUNCEMENTS

**The BVARA is looking for VE testers to assist at our test sessions, if you would like to volunteer, please contact Chris, W3OUF**

## VE TEST SESSION

The next test session will be at the Beaver County Emergency Operations Center  
351 14th Street  
Ambridge, PA 15003

Time: 5:00 P.M.  
(walk-ins allowed)

Date: Thursday, July 10th

All candidates wishing to take the test should bring ALL of the following:

1. Two (2) forms of identification. One should be a Photo ID.
2. A pencil and a blue or black pen.
3. Your original AND a photocopy of your current license (if any).
4. Your original AND a photocopy of any C.S.C.E's (if any).
5. The test fee of \$15.00.

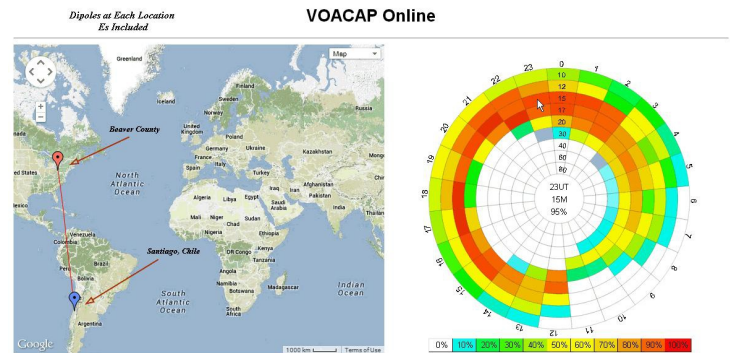
All classes of amateur radio license tests will be administered.

For more information, please contact our VE Test Coordinator:  
Chris Moratis, W3OUF  
1199 Highland Avenue  
Ambridge, PA 15003  
PHONE: 724-266-2866  
cjmoratis@gmail.com

## MONTHLY

## Presentation Series

The BVARA Presentation Series provides a vast array of topics and discussions, with a new topic every month at our club meetings.



June 12, 2014 @ 6:30PM

At Beaver County 911 Center, 351 14th Street, Ambridge PA

Speaker: Rich Soltesz, K3SOM

Topic: VOACAP and Field Day Predictions

This month's presentation was an introduction to the VOACAP propagation prediction software.

**Rich's Background:** Extra Class Ham, licensed since 1962; Volunteer Examiner (VE); B.S. Electrical Engineering

## WEEKLY

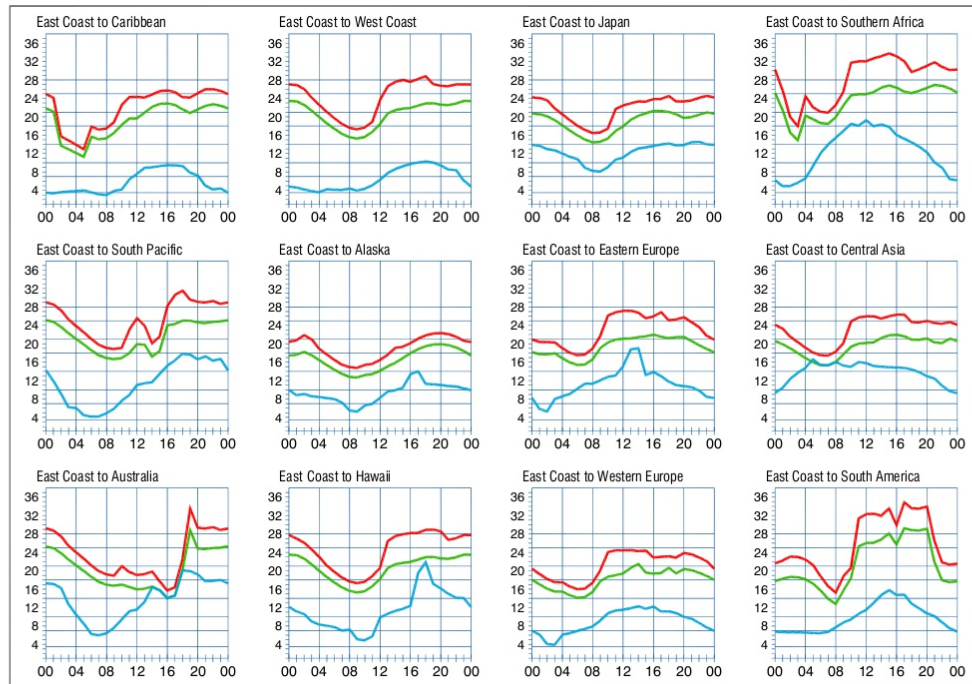
## Thursday Morning Breakfast

The BVARA meets every Thursday at Steak n Shake in Center Township, by the Beaver Valley Mall, at 10:00 AM. All area amateurs are invited and encouraged to attend the Thursday Morning Breakfast. See you at Steak n Shake!



# Propagation Charts

From the ARRL



**When are the bands open?** These charts, generated using CAPman, show probabilities for average propagation in the Month of June. On 10% of the days of this period, the highest frequencies propagated will be at least as high as the upper red curves (HPF, highest possible frequency) and on 50% of the days they will be at least as high as the green curves (MUF, classical maximum usable frequency). The blue curves show the lowest usable frequency (LUF) for a 1500-W CW transmitter. For SSB or a lower power transmitter, the LUF will be somewhat higher than the blue curves indicate. The horizontal axes show Coordinated Universal Time (UTC) and the vertical axes frequency in MHz. These predictions assume an observed 2800-MHz solar flux value of 144.

## RACES / ARES

### eQRM Urges All County Hams to Participate

As a matter of editorial opinion, the eQRM urges all Beaver County licensed amateurs to participate in the County's RACES and ARES programs. Any Beaver County Amateur that is interested in participating in the RACES/ARES programs can do so by checking into the Beaver County Public Service Net which meets every Monday evening at 8:30 PM local time on the N3TN 146.850 MHz repeater (131.8 PL)

### PROPAGATION

The East Coast propagation chart listed above is for June 2014. If you would like more information on how to read these charts, or for more information on propagation in general, please visit <http://arrl.org/propagation>



# Who We Are

Membership Information and Club Officers

BY BECOMING A MEMBER OF THE BVARA, YOU CAN HELP SECURE THE FUTURE OF AMATEUR RADIO IN BEAVER COUNTY. ADDITIONALLY, THE BVARA RECEIVES A PORTION OF EACH ARRL AND/OR WORLD RADIO SUBSCRIPTION YOU PURCHASE!

## Join the BVARA, ARRL and World Radio

Sign up for:	Price	Quantity
<input type="checkbox"/> BVARA FULL MEMBERSHIP	20.00	
<input type="checkbox"/> BVARA STUDENT MEMBERSHIP	15.00	
<input type="checkbox"/> BVARA ASSOCIATE MEMBERSHIP	10.00	
<input type="checkbox"/> CHILD UNDER 21 IN HOME	5.00	
<input type="checkbox"/> ONE YEAR ARRL MEMBERSHIP	39.00	

ARRL MEMBER? YES NO Subtotal: \_\_\_\_\_  
Donation: \_\_\_\_\_  
Total: \_\_\_\_\_

Your License Class (if any):

☐ Novice Name \_\_\_\_\_  
☐ Technician Address \_\_\_\_\_  
☐ General \_\_\_\_\_  
☐ Advanced Email Address \_\_\_\_\_  
☐ Extra Phone \_\_\_\_\_

Your Call Sign: \_\_\_\_\_ Exp. date \_\_\_\_\_

Signature \_\_\_\_\_

Make Check or Money order payable to:  
The Beaver Valley Amateur Radio Association, P.O. Box 424  
South Heights, PA 15081

### 2014 BVARA OFFICERS

President: Jack Spencer, KZ3Z  
Vice President: Jeff Waite, K3SLK  
Second Vice Pres.: Mark Kavic, KB3LED  
Treasurer: Pam Spencer, W3PMS  
Secretary: Norm Trunick, K3NJT  
Director: George Caffro, N3HOJ  
Director: Denny Herbuth, KR3DX  
Trustee: Rich Soltesz, K3SOM  
Newsletter Editor: Denny Herbuth, KR3DX

### MONTHLY MEETINGS

E-Board meetings are now held the Saturday before the monthly club meeting.  
VE testing begins at 5:00.  
Regular meetings are at 6:30.

All meetings are held at  
Beaver County  
Emergency Operations Center  
351 14th Street  
Ambridge, PA 15003  
on the second Thursday of every month (unless otherwise stated).

### MEETING DATES

2014  
May 8  
June 12  
July 10  
August - No meeting (Corn Roast, Date TBA)  
September 11  
October 9  
November 13  
December - No meeting (Christmas Party)

2015  
January 8  
February 12  
March 12

QSL CARD  
Special 90th Anniversary Edition

